

1st Young Surveyors Conference
4th & 5th May, 2012
Palazzo Corrodi, Cassa Geometri
Rome, Italy



Knowing To Create The Future



FIG WORKING WEEK 2012
May 6-10 2012
Rome, Italy

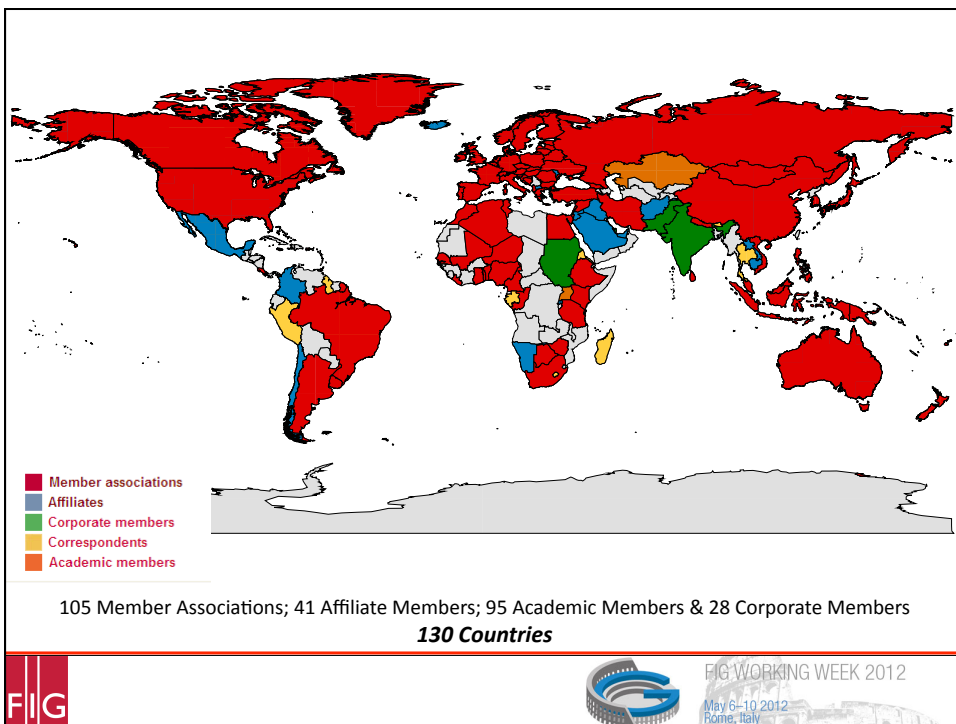


FIG WORKING WEEK 2012
May 6-10 2012
Rome, Italy

The screenshot displays a GIS application window titled 'SPDK - Microsoft Internet Explorer'. On the left, there are two map views: a '3D SURFACE MAP (IMAGE)' and a '3D CONTOUR MAP (IMAGE AND DXF FILE)'. Below the contour map is a data table titled 'DATA FROM TELUK EMPEDAK TRIP 13 JULY 2007'. The table has columns for 'Station', 'Easting', 'Northing', and 'Height'. The main window shows a 2D map with various polygons and points, some labeled with numbers like 27537, 7886, 7887, 7888, 7889, 7890, 7891, 7892, 7893, 7894, 7895, 7896, 7897, 7898, 7899, 7900, 7901, 7902, 7903, 7904, 7905, 7906, 7907, 7908, 7909, 7910, 7911, 7912, 7913, 7914, 7915, 7916, 7917, 7918, 7919, 7920, 7921, 7922, 7923, 7924, 7925, 7926, 7927, 7928, 7929, 7930, 7931, 7932, 7933, 7934, 7935, 7936, 7937, 7938, 7939, 7940, 7941, 7942, 7943, 7944, 7945, 7946, 7947, 7948, 7949, 7950, 7951, 7952, 7953, 7954, 7955, 7956, 7957, 7958, 7959, 7960, 7961, 7962, 7963, 7964, 7965, 7966, 7967, 7968, 7969, 7970, 7971, 7972, 7973, 7974, 7975, 7976, 7977, 7978, 7979, 7980, 7981, 7982, 7983, 7984, 7985, 7986, 7987, 7988, 7989, 7990, 7991, 7992, 7993, 7994, 7995, 7996, 7997, 7998, 7999, 8000. A red square on the map is labeled 'Mansion Putera Apartment'. On the right, there is a photo of a surveyor using a total station. Below the photo is a photo of a road construction site with workers in high-visibility vests. The taskbar at the bottom shows the Start button and several open applications: SPDK - Mic..., Takmat An..., Document..., Takmat UK..., Overview_F..., and the system clock shows 3:05 PM.

FIG

FIG WORKING WEEK 2012
May 6-10 2012
Rome, Italy

More than 1.02 billion hungry people

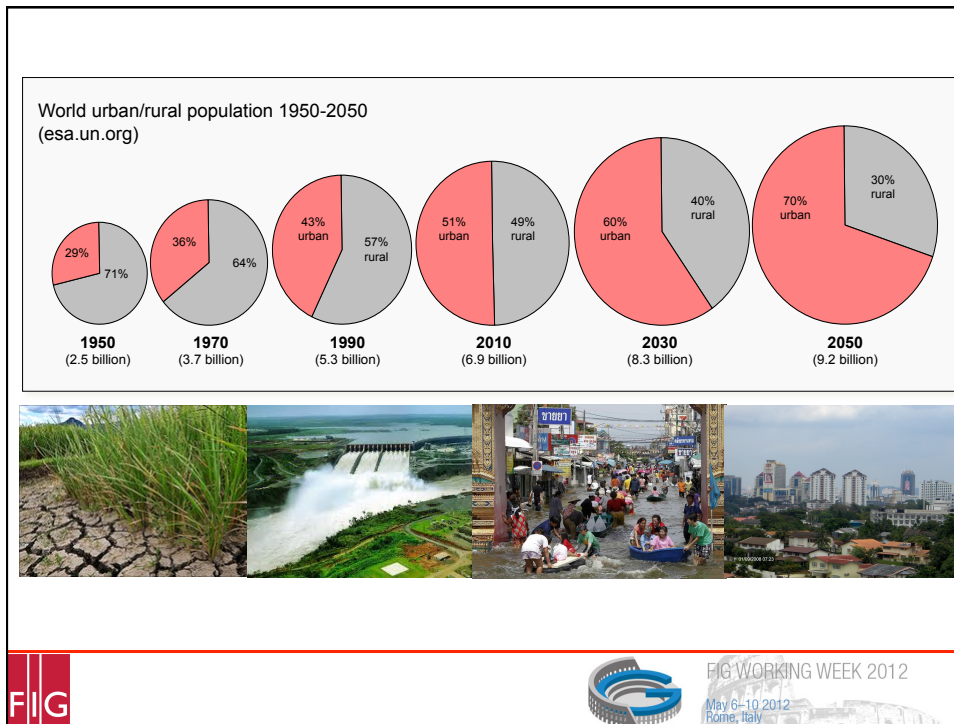
Region	Millions of people
Sub-Saharan Africa	265
Asia and the Pacific	642
Latin America and the Caribbean	53
Near East and North Africa	42
Developed countries	15

*Millions of people


One sixth of humanity undernourished (FAO, 2009)

FIG


FIG WORKING WEEK 2012
May 6-10 2012
Rome, Italy

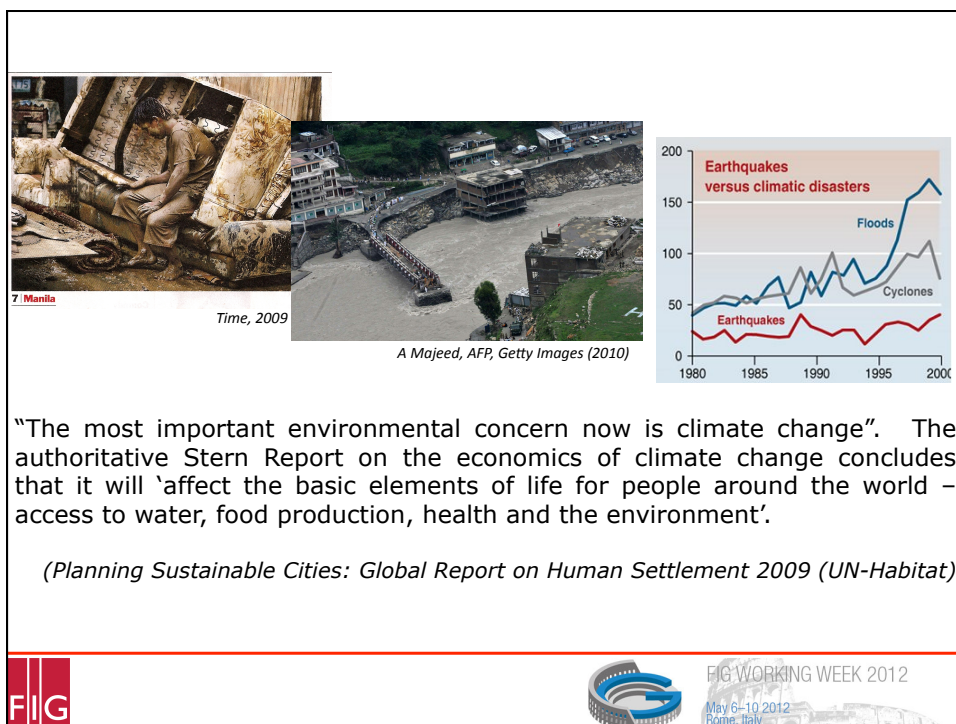
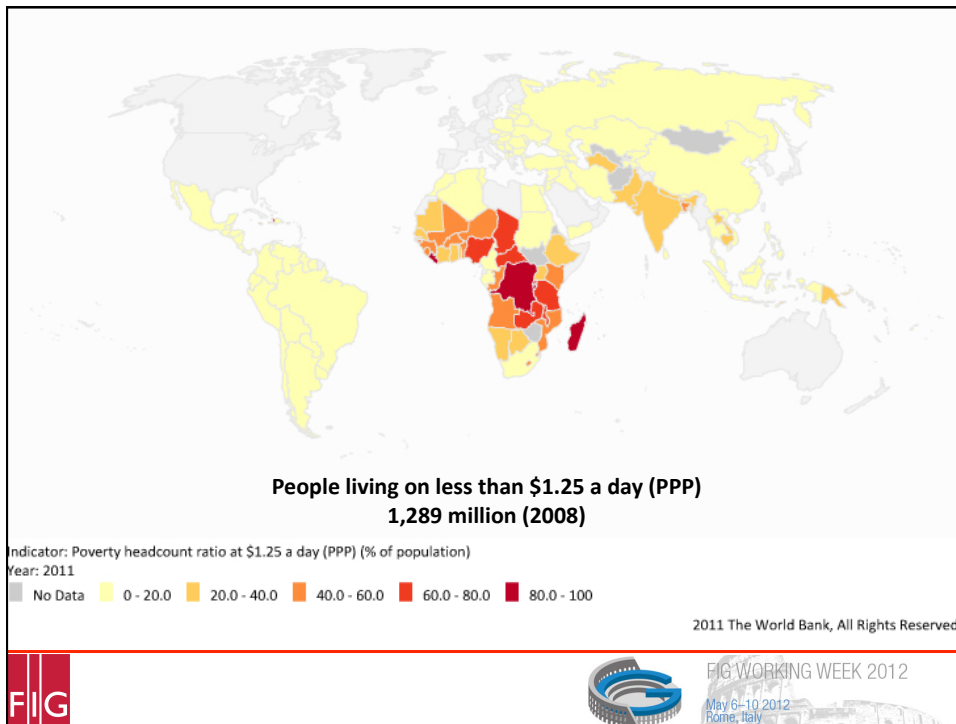


	1950	1975	2007	2025	2050
World Urban Population (million)	737	1,518	3,294	4,584	6,398
Percentage	29.1%	37.3%	49.4%	57.2%	69.6%
More Developed Region (million)	427	702	916	995	1,071
Less Developed Region (million)	310	817	2,382	3,590	5,327




Close to 1 billion people, or 32 per cent of the world's current urban population, live in slums in inequitable and life-threatening conditions, and are directly affected by both environmental disasters and social crises, whose frequency and impacts have increased significantly during the last few decades.
(UN-Habitat, 2009)

FIG  FIG WORKING WEEK 2012
May 6-10 2012
Rome, Italy



United Nations baseline forecast for the growth of world gross product (WGP) is 2.6 per cent for 2012 and 3.2 per cent for 2013, which is below the pre-crisis pace of global growth



World Economic Situation and Prospects 2012

Photograph: Pawel Kopczynski/Reuters

Global business barometer
Balance of respondents expecting global business conditions to improve, 2011, percentage points

Region	May	July	October
Western Europe	15	10	10
Latin America	35	25	25
Overall*	20	15	15
Asia	25	15	15
Eastern Europe	25	15	15
North America	25	15	15

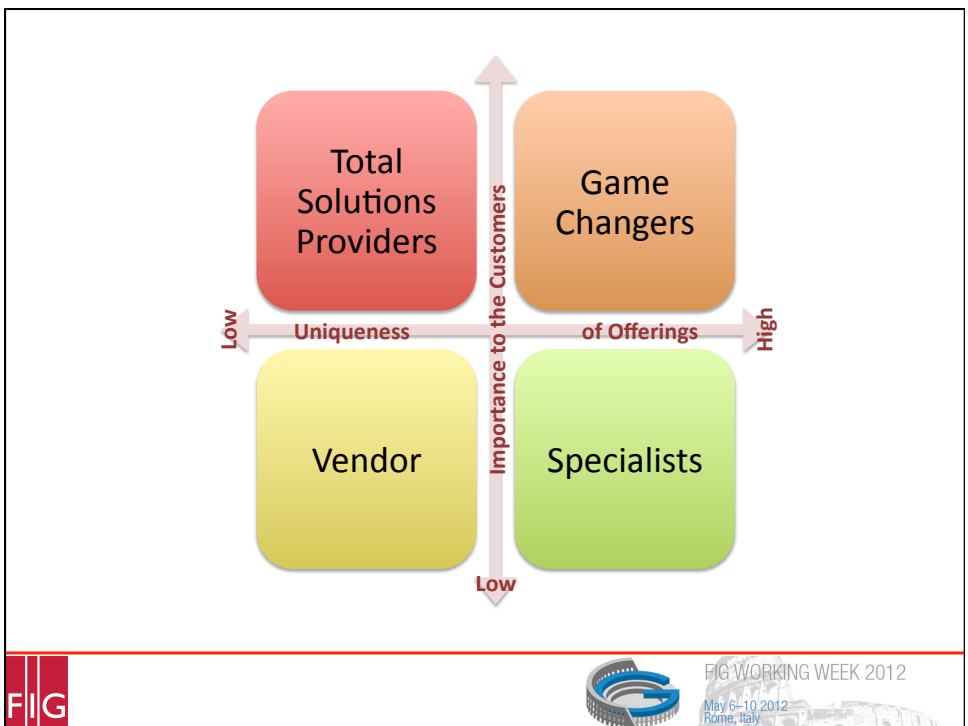
Do you expect the euro zone to break up? October 2011, % responding

Region	Yes	No
Asia	10	90
North America	15	85
Middle East and Africa	20	80
Overall	25	75
Latin America	30	70
Western Europe	35	65
Eastern Europe	40	60

Source: The Economist/FT survey *Includes Middle East and Africa

Nov 10th 2011, 17:03 by The Economist Online

FIG WORKING WEEK 2012
May 6-10 2012
Rome, Italy





“The rapid advances in geospatial information and technologies, and their easy accessibility, have made such information an invaluable tool in research, policy and business planning and implementation. Across all sectors of society, it is increasingly recognized that the effective use of geospatial information helps address many of the current humanitarian, peace and security, environmental, and development challenges facing the world, such as climate change, natural disasters, disease pandemics, famines, population displacement, food and economic crises, which are of a cross-border nature requiring both global, regional and national policy responses.”
(United Nations Secretary General's Report to the UN Economic and Social Council, 2011)

More than 1.02 billion hungry people

Millions of people

Chaiwat Subpratom, Reuters (2011)

7 Manila, Time, 2009

GGIM has a vision to migrate to a paradigm of **managing all information spatially**






FIG WORKING WEEK 2012
May 6-10 2012
Rome, Italy

Cadastre 2.0

Need a shift in thinking.....

- Multipurpose
- Transparent
- Accountable
- Citizen Engagement
- Cloud Computing
- Online Data
- Improving Data Quality
- Mobile
- 3D

feedback

currency
open government

wiki

Rich Data Model

SDI

web services

LADM

e-government

metadata

accuracy

completeness

STDM

maps & apps

portals

connectivity

quality data

© Brent Jones






FIG WORKING WEEK 2012
May 6-10 2012
Rome, Italy

Surveyor 2.0

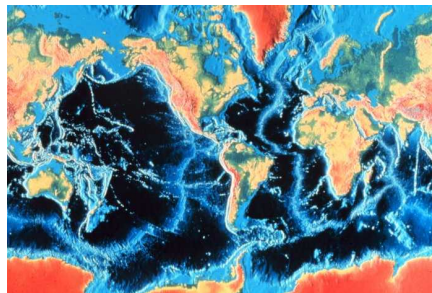


FIG WORKING WEEK 2012
May 6 - 10 2012
Rome, Italy

Surveyor 2.0



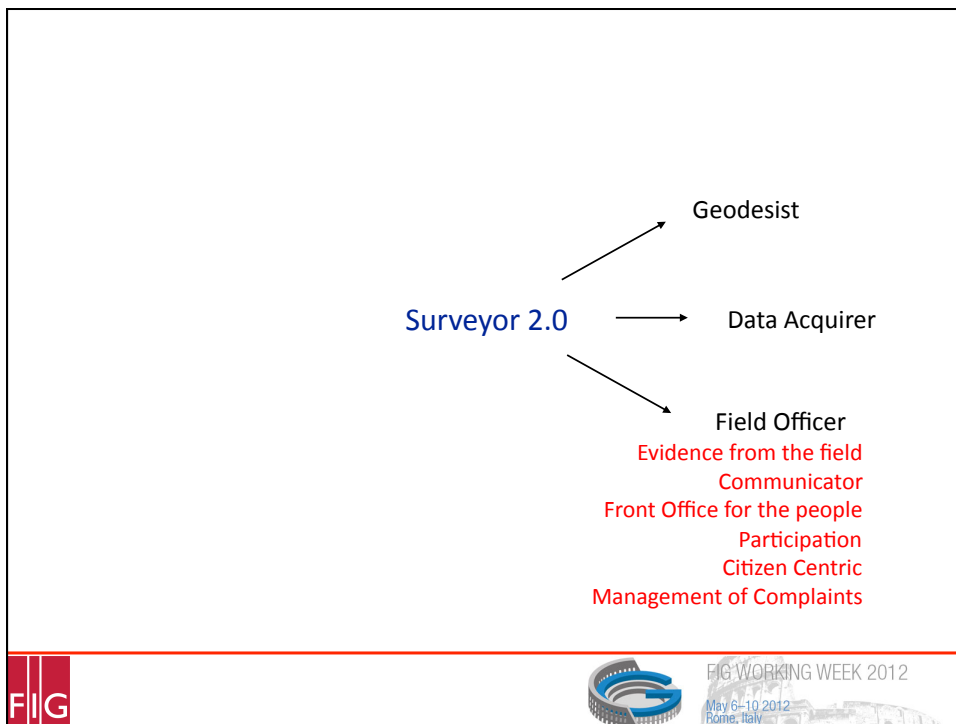
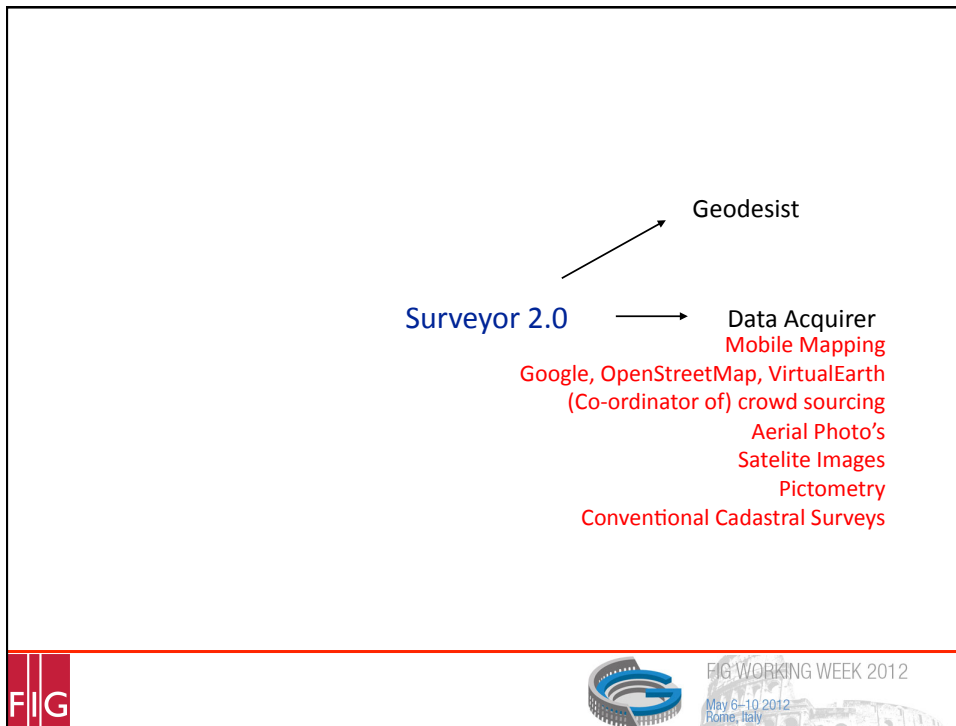
Geodesist
Co-ordinate systems
Elevation Models
GNSS Infrastructures
This is the Foundation

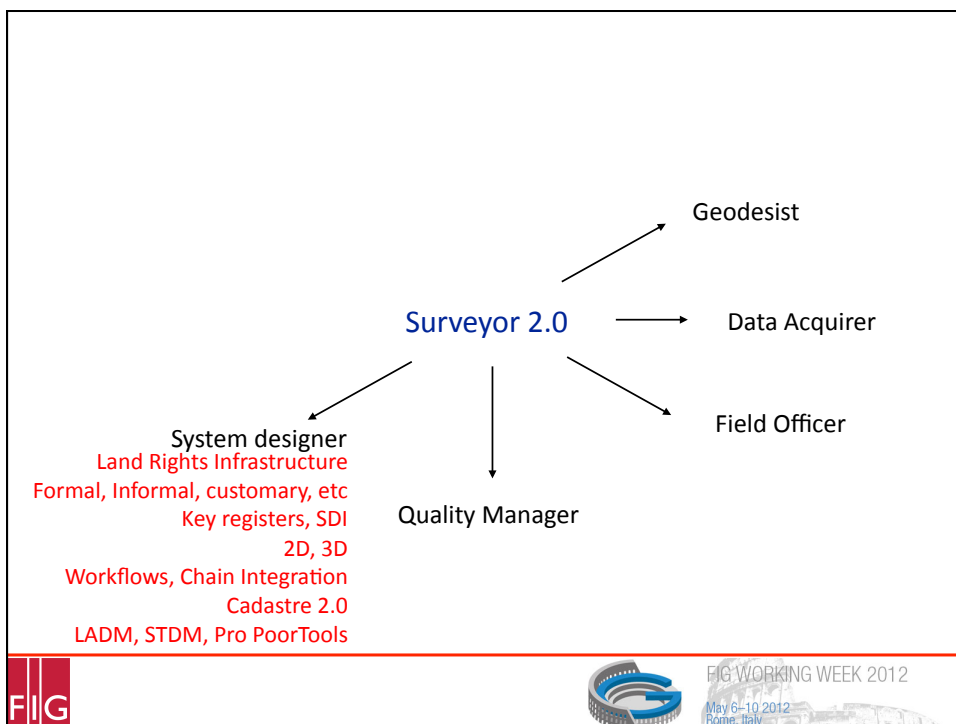
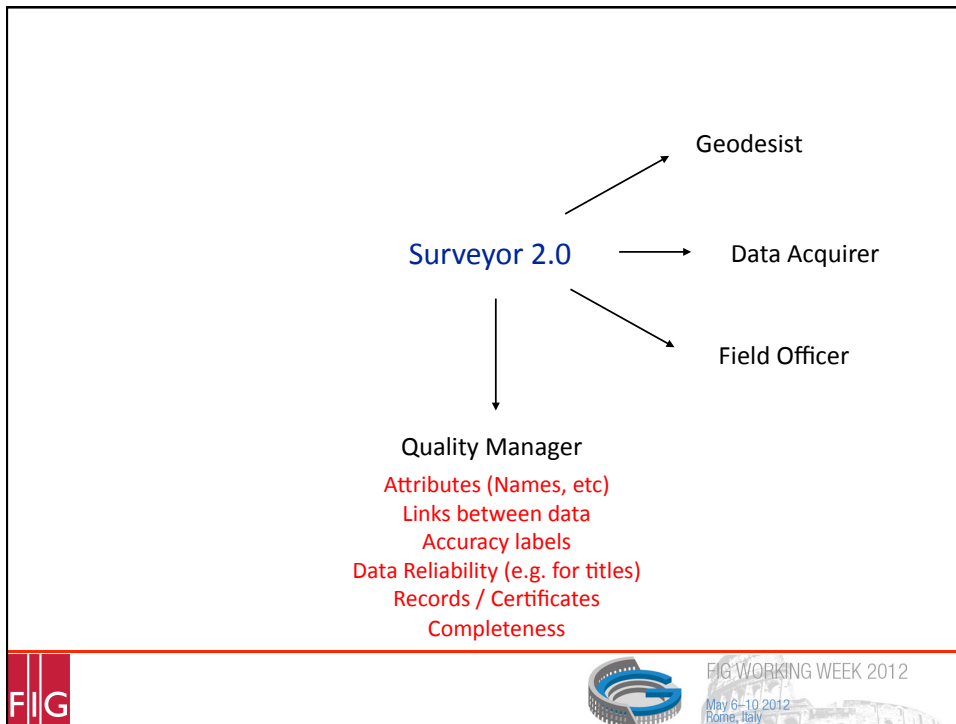


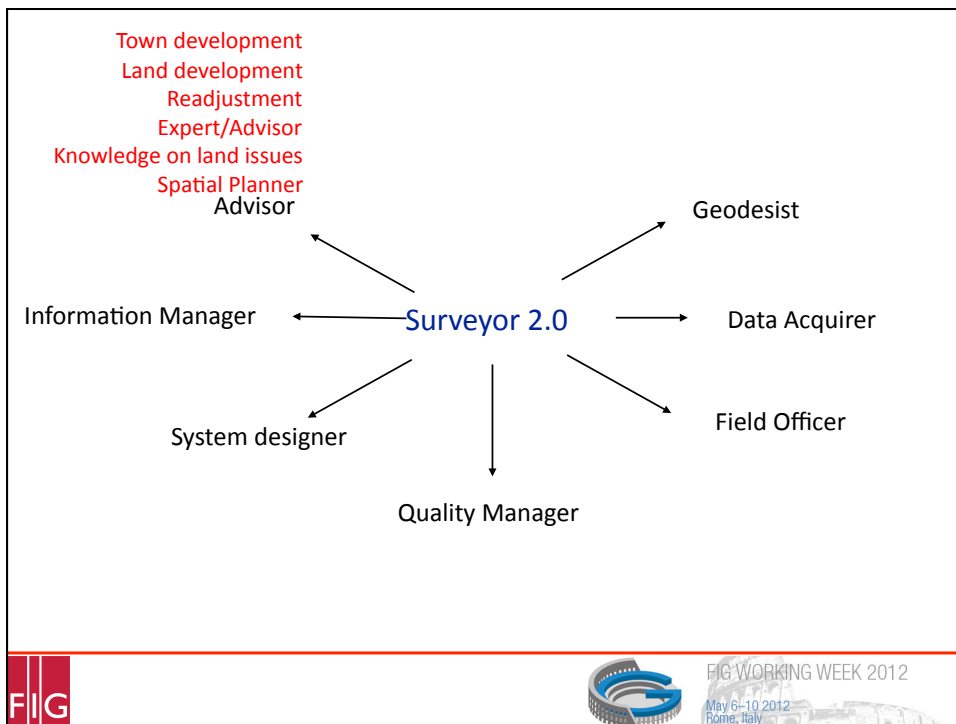
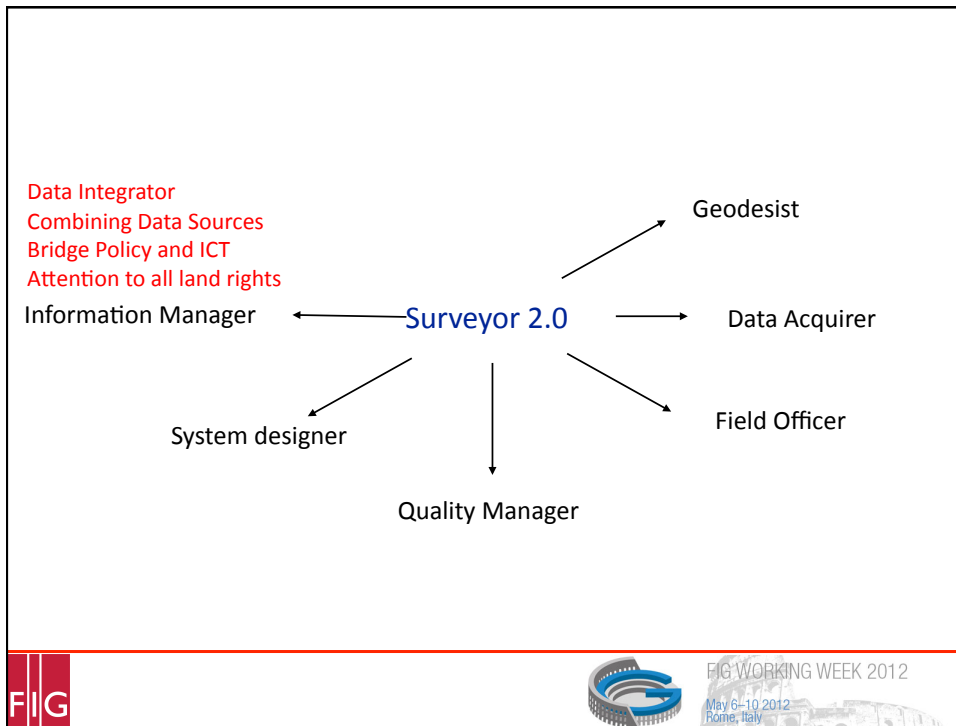
© US National Oceanic and Atmospheric Administration

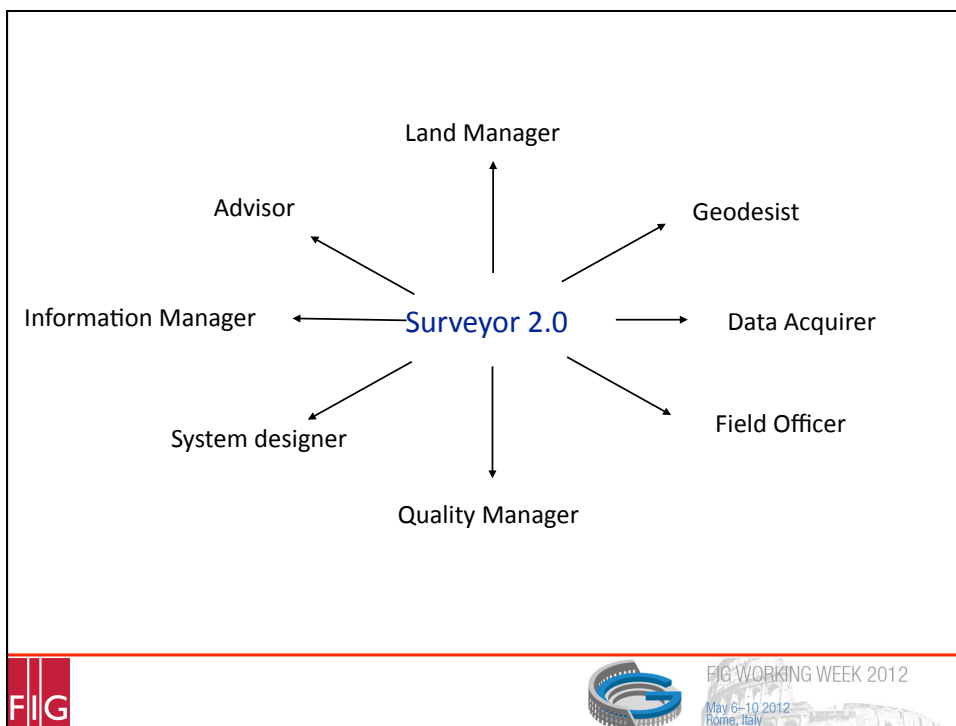
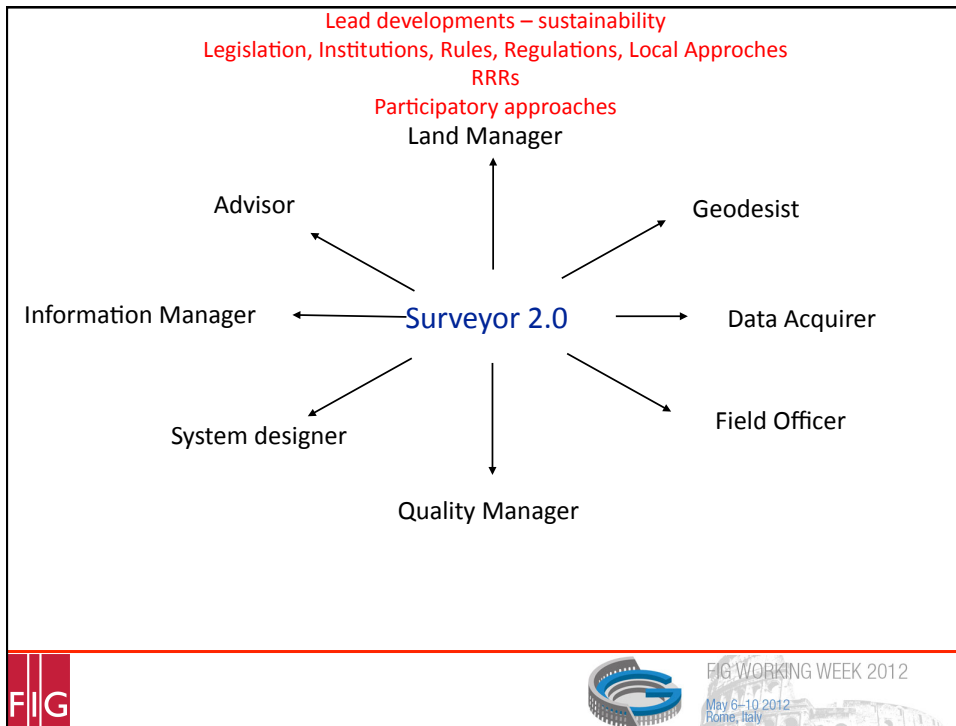


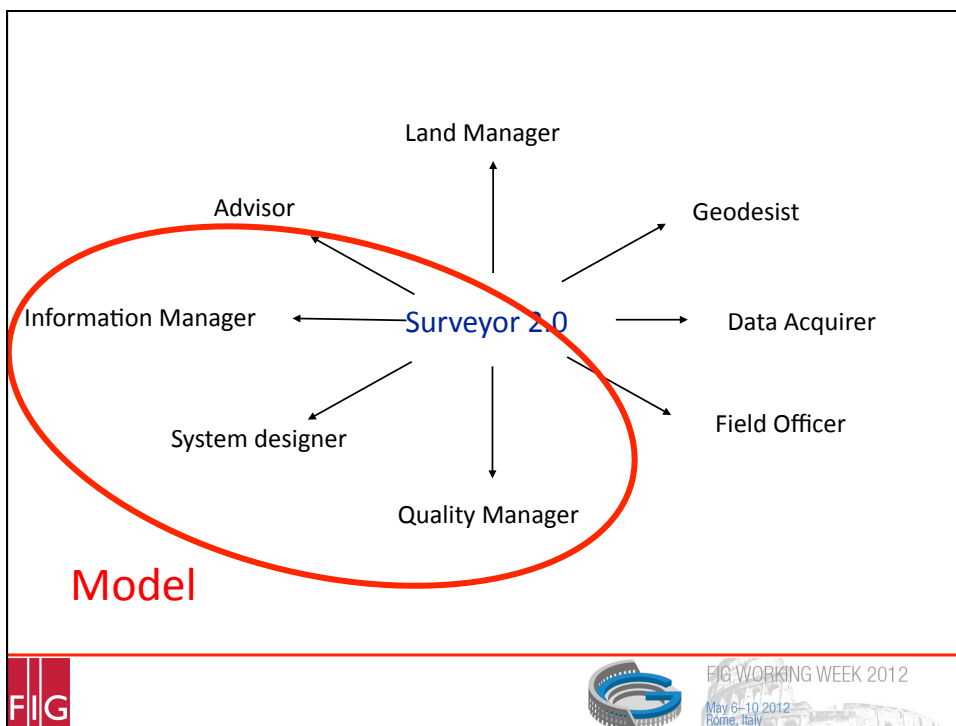
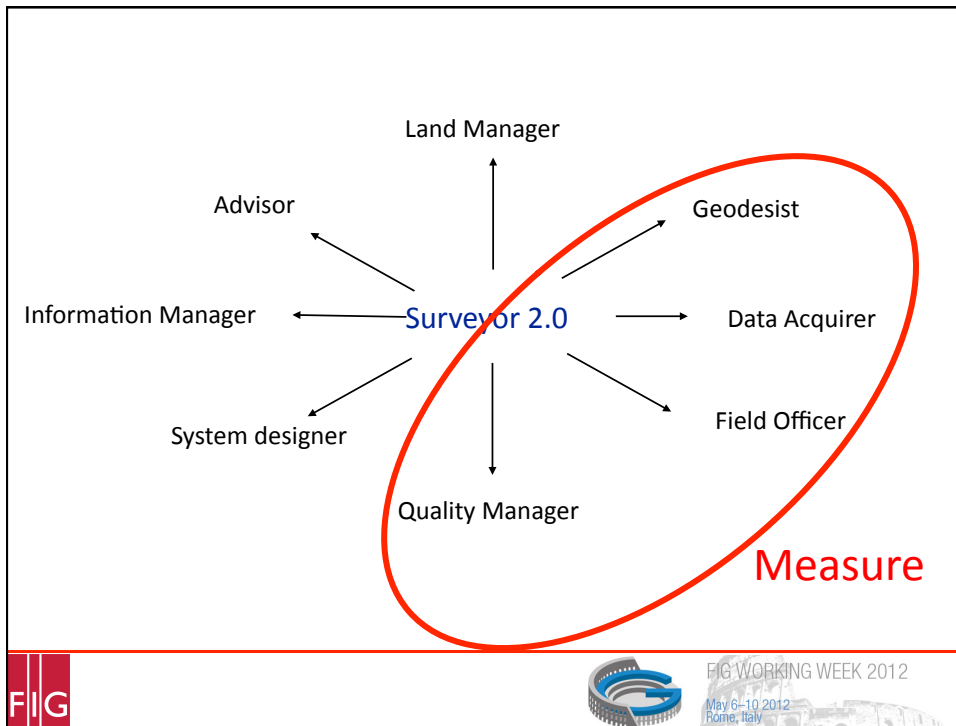
FIG WORKING WEEK 2012
May 6 - 10 2012
Rome, Italy

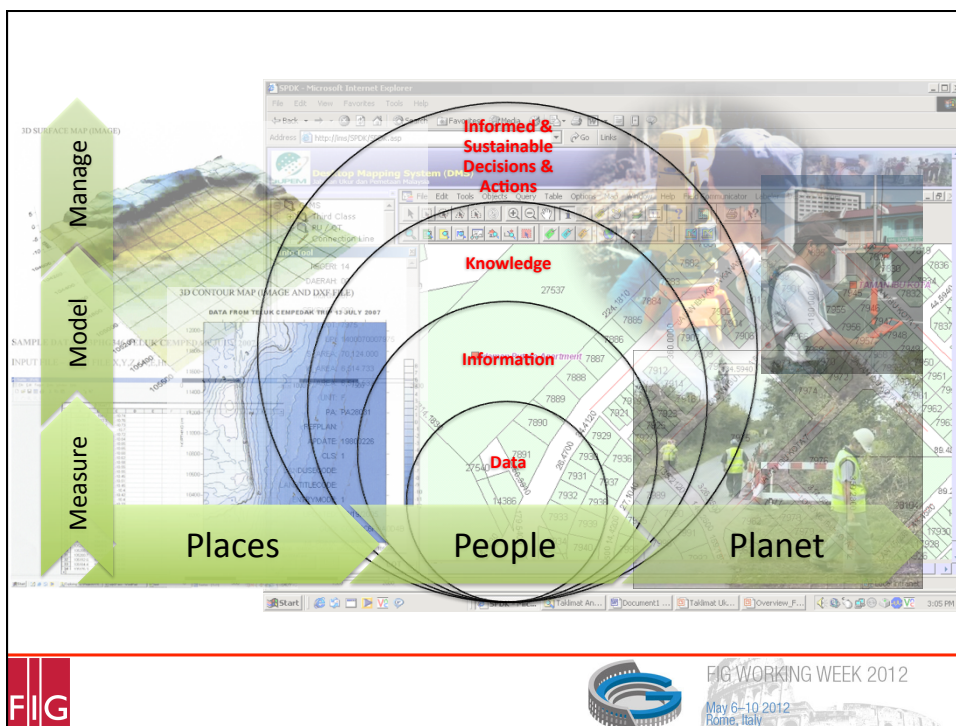
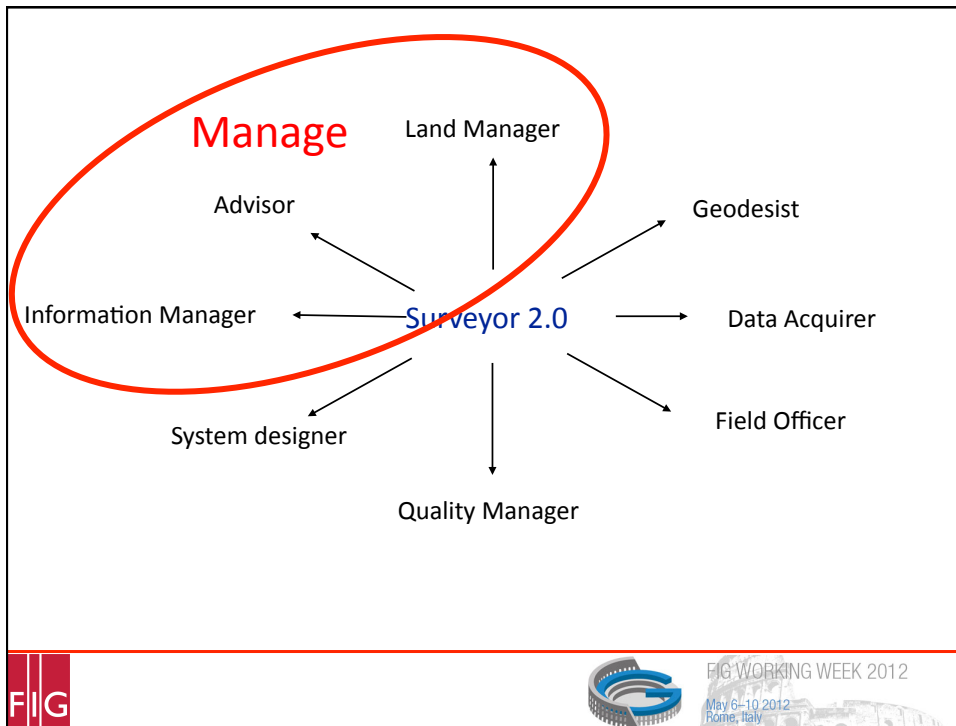


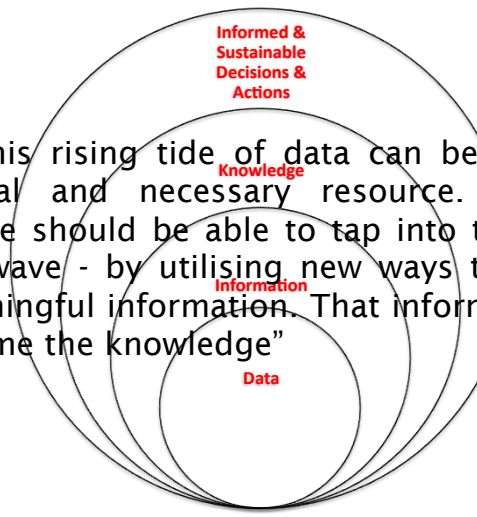












"Like water, this rising tide of data can be viewed as an abundant, vital and necessary resource. With enough preparation, we should be able to tap into that reservoir - and ride the wave - by utilising new ways to channel raw data into meaningful information. That information, in turn, can then become the knowledge"

(Les Alberthal [alb95])

FIG

FIG WORKING WEEK 2012
May 6 - 10 2012
Rome, Italy

There is no doubt that surveyors are critical to the future society of both developed and developing world

Clarissa Augustinus (UN-Habitat)

FIG

FIG WORKING WEEK 2012
May 6 - 10 2012
Rome, Italy