

# The Role of FIG

In contribution to professional development  
and the global agenda

**Prof. Stig Enemark**



President

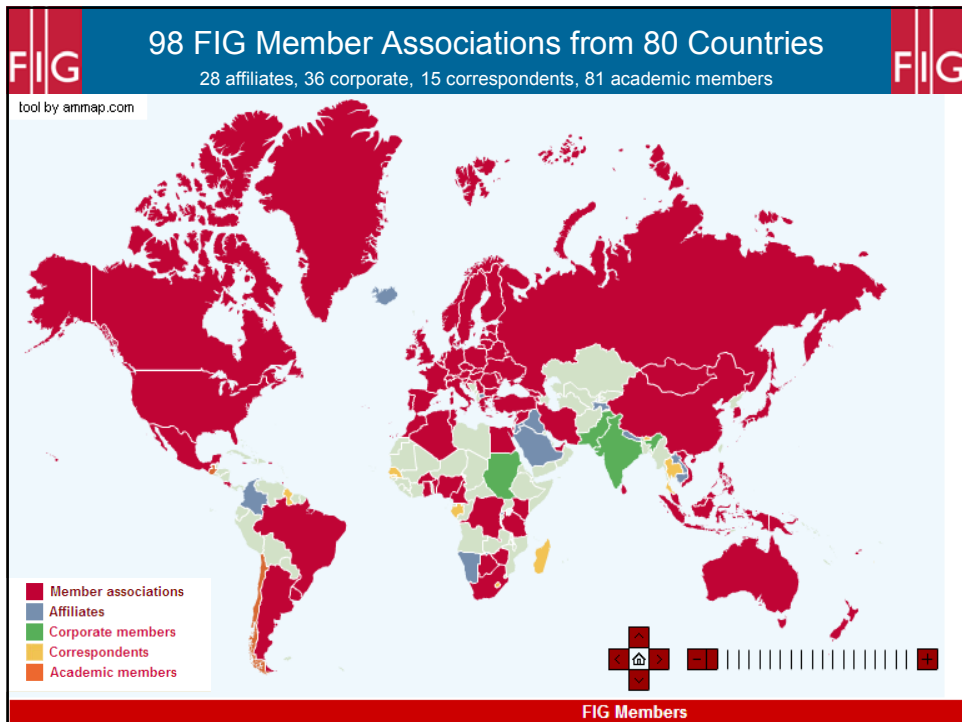
Aalborg University, Denmark

ONIGT – RABAT, MOROCCO  
17 – 20 OCTOBER 2008

## Greetings from Copenhagen



# Greetings from the Home Base



## Current **FIG** Policies

Flying high  
while still  
keeping our feet on the ground



## Current **FIG** Policies

- **Flying high**
  - Global partnership with the UN-agencies incl. the World Bank in support of the global agenda such as achieving the MDGs
- **Keeping our feet on the ground**
  - Professional and institutional development at national and local level in support of the needs of our member associations and the individual surveyors.

## What is the role of the Surveyors ? Is it changing ?

### FIG Policies - the big swing

- **From Measurement**

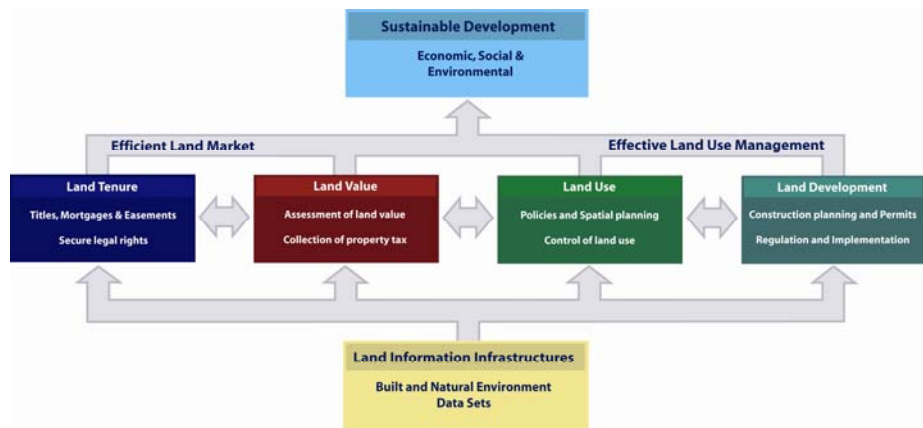
Surveyors will still be high level experts within measurement science, but due to technology development the role is changing into managing the measurements

- **To Management**

Surveyors will increasingly contribute to building sustainable societies as experts in managing land and properties

***The Land Professionals***

## Land Administration Systems...



## Land Governance - The Big Challenges

Contributing to achieving the MDGs - towards development, security and human rights for all.

This also include the big challenges of the new millennium:

- Climate Change
- Food Shortage
- Energy Scarcity
- Urban Growth
- Environmental degradation
- Natural Disasters

**All these issues relate to governance and management of land**

## The role of the surveying profession

Land governance and management is a core area for surveyors – the Land Professionals. It will require:

- High level geodesy models to predict future change
- Modern surveying and mapping tools to support management and implementation
- Spatial data infrastructures to support decision making on the natural and built environment
- Secure tenure systems
- Sustainable systems for land valuation, land use management and land development
- Systems for transparency and good governance

**Land governance is a cross cutting issue confronting all traditional silo-organised land administration systems.**

## Current Policies

### Do Surveyors have a role to play in the global agenda?

No development will take place without having a spatial dimension

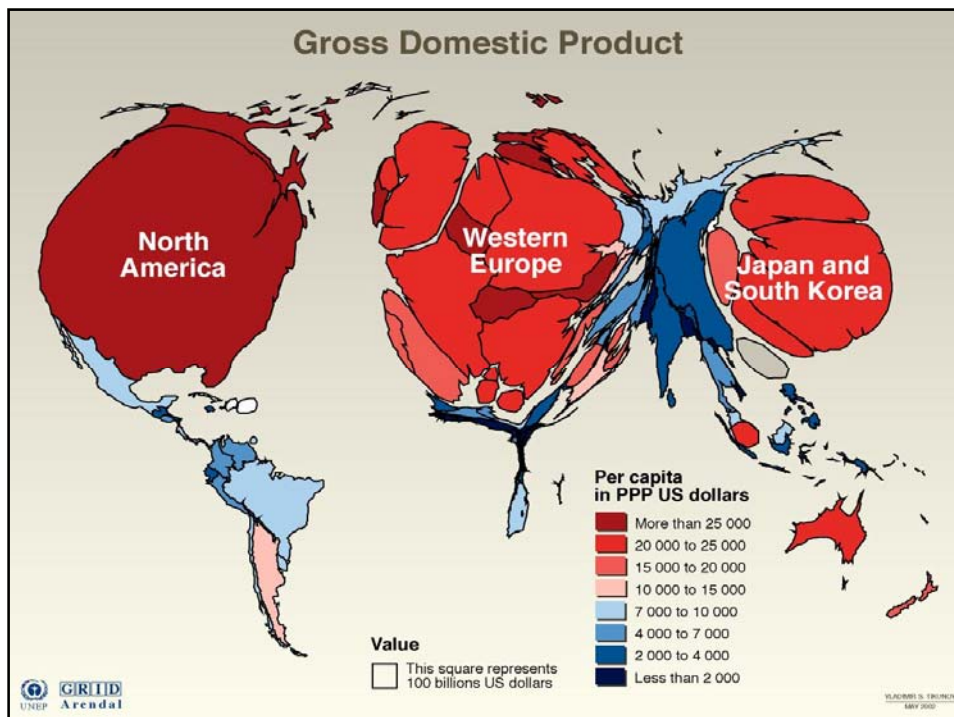
No development will happen without the footprint of the surveyor

## The UN Millennium Development Goals

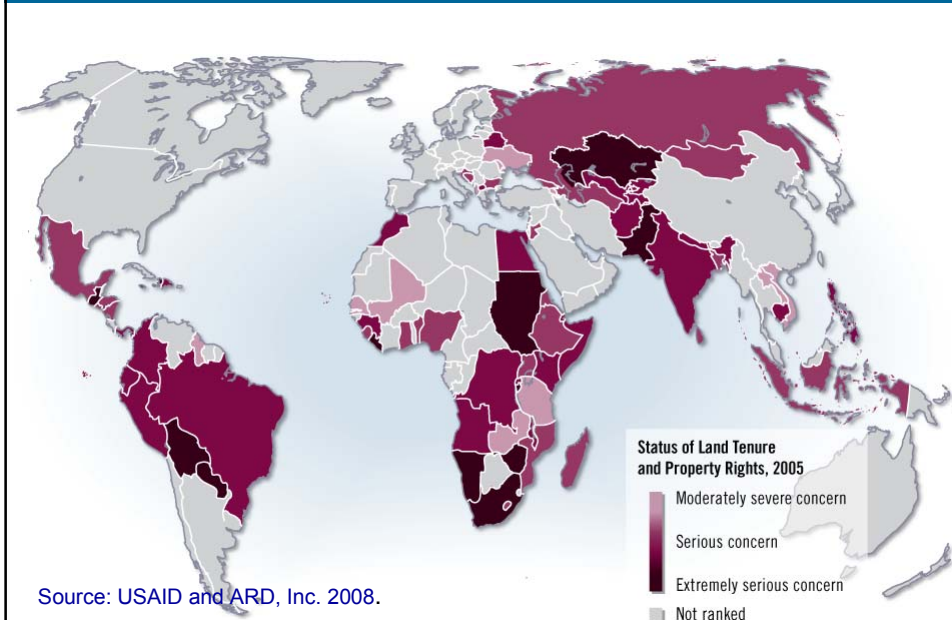
- Goal 1: Eradicate extreme poverty and hunger
- Goal 2: Achieve universal primary education
- Goal 3: Promote gender equality and empower women
- Goal 4: Reduce child mortality
- Goal 5: Improve maternal health
- Goal 6: Combat HIV/AIDS, malaria and other diseases
- Goal 7: Ensure environmental sustainability

### Goal 8: Develop a Global Partnership for Development

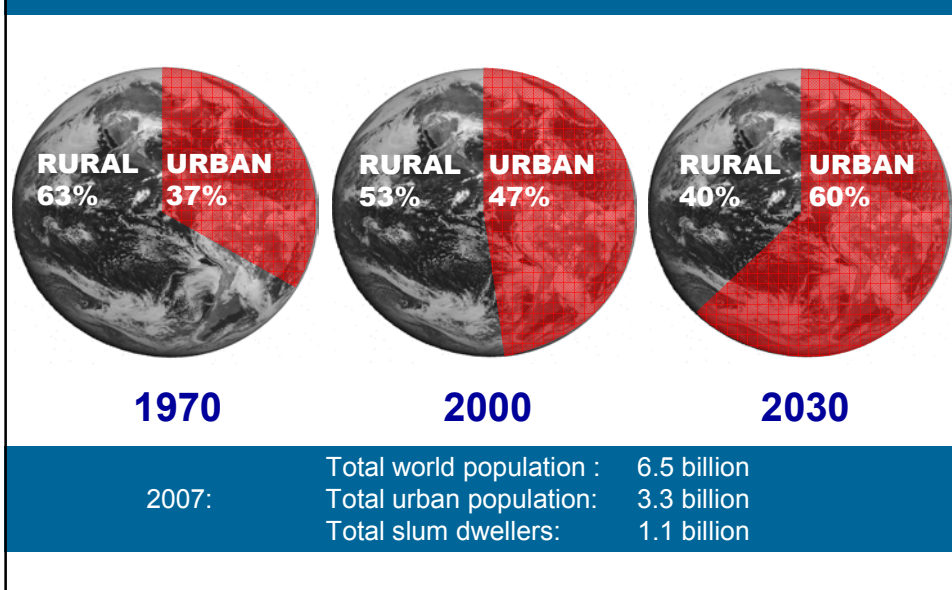
The framework includes 18 targets and 48 indicators enabling the ongoing monitoring of annual progress



## World status of Land tenure and property Rights



## Urban population growth





## Mega cities of the world 2015





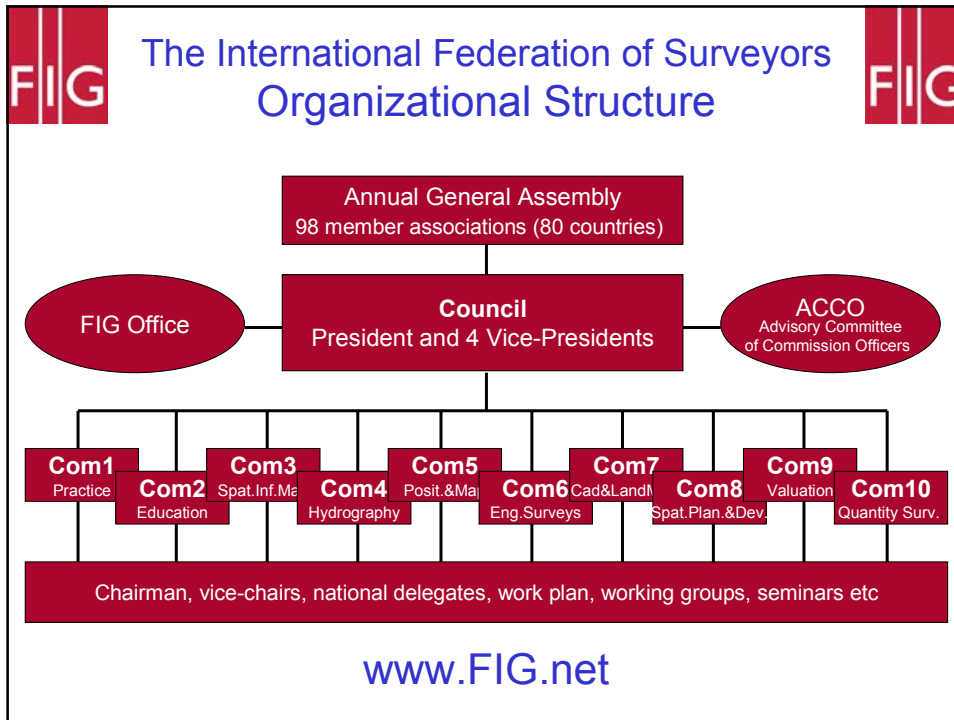
## It is all about:

- People,** human rights, engagement and dignity
- Politics,** land policies and good governance
- Places,** shelter, land rights, and natural resources
- and **Power,** decentralisation and empowerment

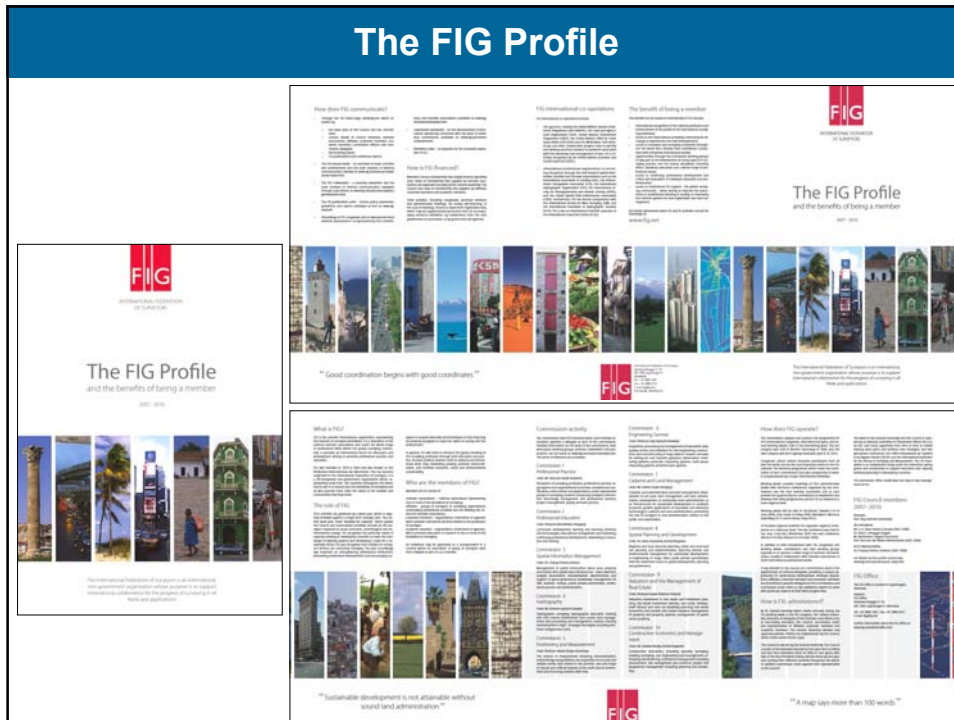


## The role of FIG

What is the role of  in this regard?



## The FIG Profile



## The Role of FIG

- **Professional Development**
  - Global forum for professional discussions and interactions
  - Conferences, symposia, commission working groups, .....
- **Institutional Development**
  - Institutional support for educational and professional development at national and international level
  - Building the capacity
- **Global Development**
  - Cooperation with international NGO's such as the UN agencies, World Bank, and sister organisations
  - Joint activities and common policy-making to reduce poverty and enforce sustainable development

## Professional Development

- **FIG Commissions**

Work plans, working groups,

→ involvement of national delegates → professional development at national and individual level.

- **FIG Conferences**

Annual Working Weeks, biannual regional conferences

→ involvement of national delegates and international cooperation

→ professional development at national and individual level.

- **Commission seminars and workshops**

International cooperation – new knowledge – professional development



## Institutional Development

- **Capacity building**

Institutional support at national level for development of education and training, surveying and land administrations systems, surveying associations.

- **Task forces**

Mutual Recognition of Professional Qualifications - Guidelines  
Institutional and Organisational Development - Guidelines

- **Networks**

Standards – liaison with standardisation bodies  
Young Surveyors – integration generation



## The Role of the Surveying Associations

- **Professional Skills**
  - High level education and training
  - CPD opportunities and requirements.
- **Professional Responsibilities**
  - Toward the clients
  - Toward society
  - Strong professional organisations
- **Professional and Ethical Codes of Conduct**
  - Providing common values of honesty, integrity, responsibility
  - Standards for delivery of professional services
  - Indemnity insurance

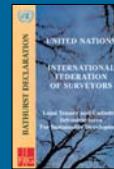
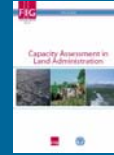
## Global Development

- UN agencies have access to national governments and to setting an global agenda – but will often depend on interest groups and NGO's for implementing this agenda.
- **FIG** as an international NGO has access to national associations and individual professionals - but will often depend on the UN-agencies to determine the agenda
- **Global partnership will then establish the link that drives development for achieving the global agenda such as the Millennium Development Goals.**
- Global recognition → national recognition → local recognition



## FIG Global Partnership with

- **FAO**, projects on capacity building, good governance, land economics, etc... .
- **UN-HABITAT**, partner in the GLTN network, projects on informal settlement, informal development, gendered land tools, etc....
- **World Bank**, joint activities and publications, and joint conference March 2009 on Land Governance in support of the MDGs



## Partnership with UN-Habitat

### Informal settlements

Traditional cadastral systems do not provide for security of tenure in informal settlements.

A more flexible system is needed for identifying the various kind of social tenure existing in informal settlements.

Such systems must be based on a global standard and must be manageable by the local community itself:

 cooperates with UN-Habitat to develop

**The Social Tenure Domain Model.**



# Partnership on Disaster Risk Management

## Surveyors without frontiers ?

Tsunami, South East Asia  
26 December 2004

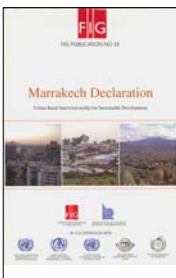


## FIG publications



[WWW.FIG.NET](http://WWW.FIG.NET)

**The future belongs to our children**



**Marrakech FIG Regional Conference, December 2003**

**Marrakech FIG Working Week, 2011**

**Thank you for your attention**

**See you in Marrakech 2011**

