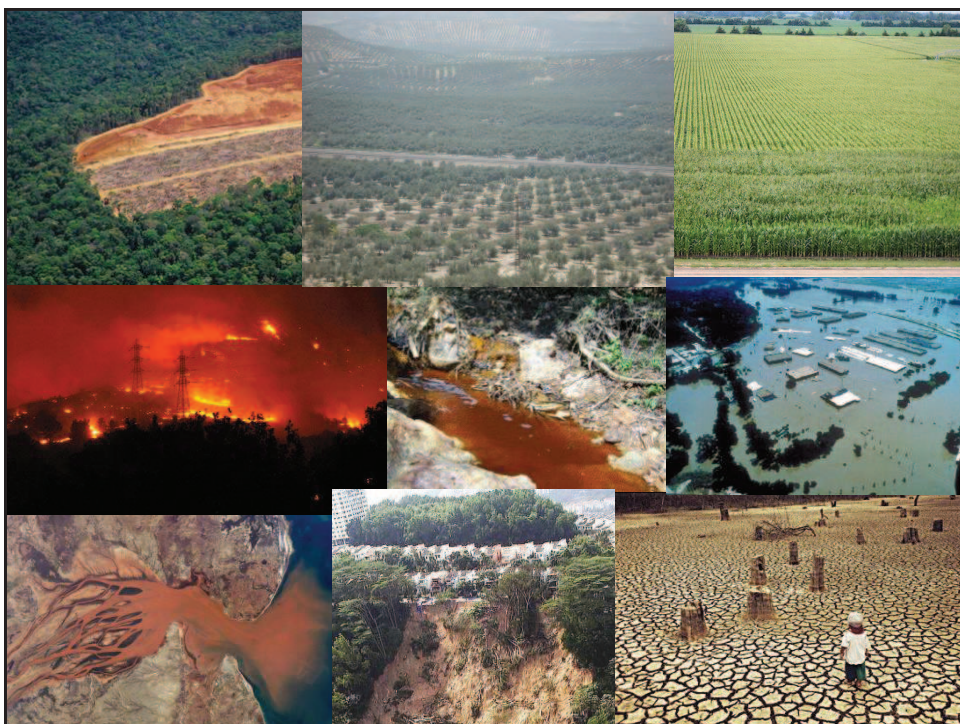




SDI and Cadastre
Bridging gaps in Public Administration data
Geoconference
"Cadastre 4.0 - Transparency-Participation-Collaboration"
FIG Commission 7
Outubro 2016

Rui Pedro Julião
rpj@fcsh.unl.pt





KEY CHALLENGES

- Sustainable development
 - Physical
 - Economic
 - Social
- Transparency
- Participation
- Collaboration

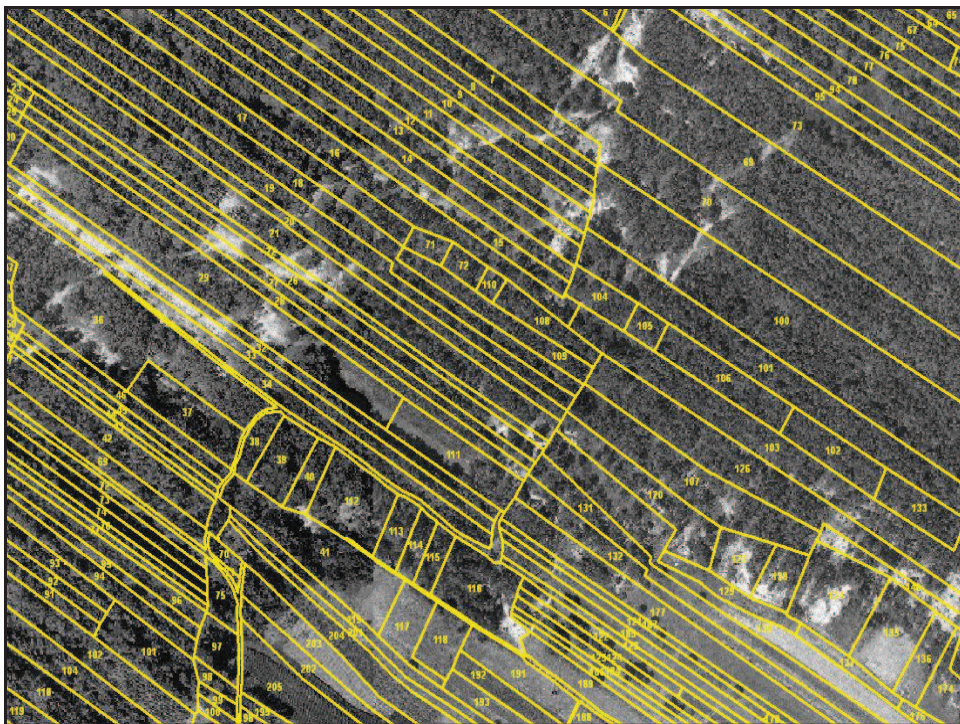
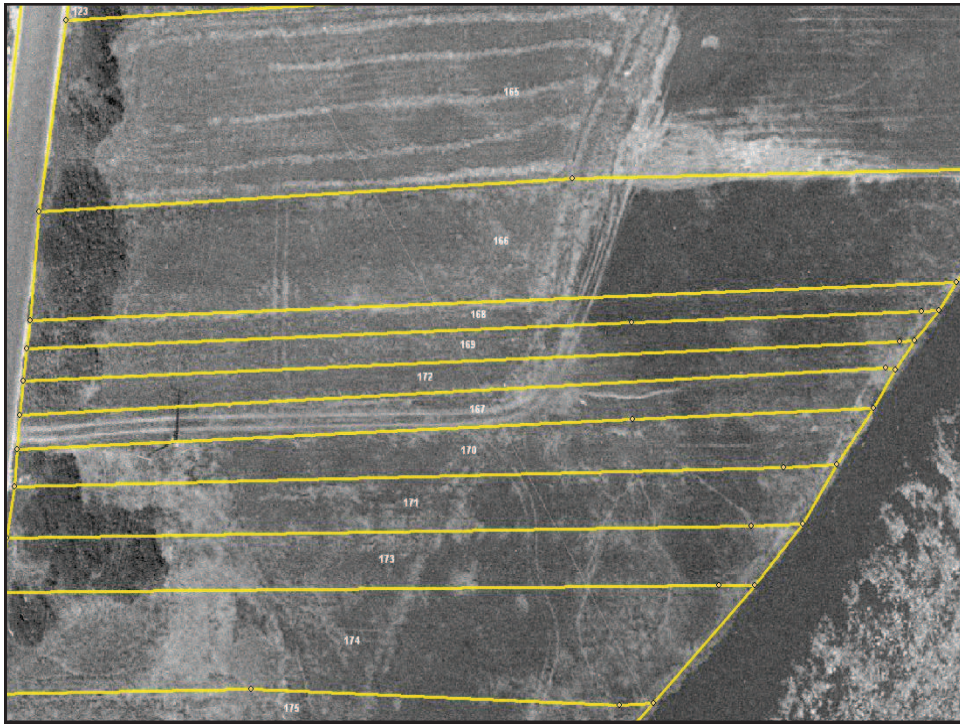
DATA AVAILABILITY, ACCESSIBILITY & QUALITY

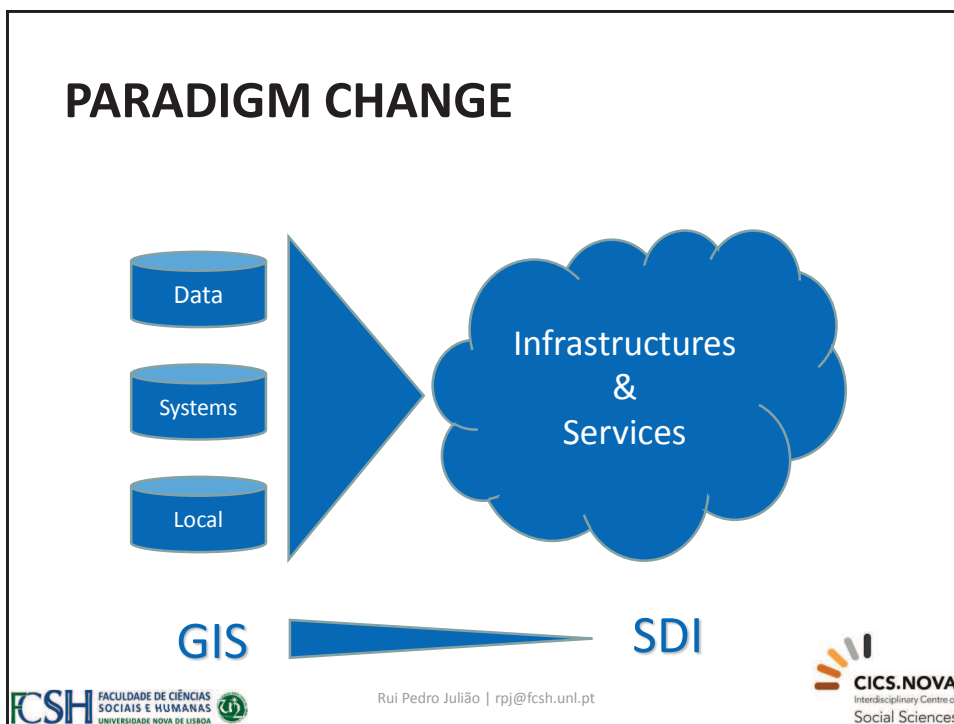
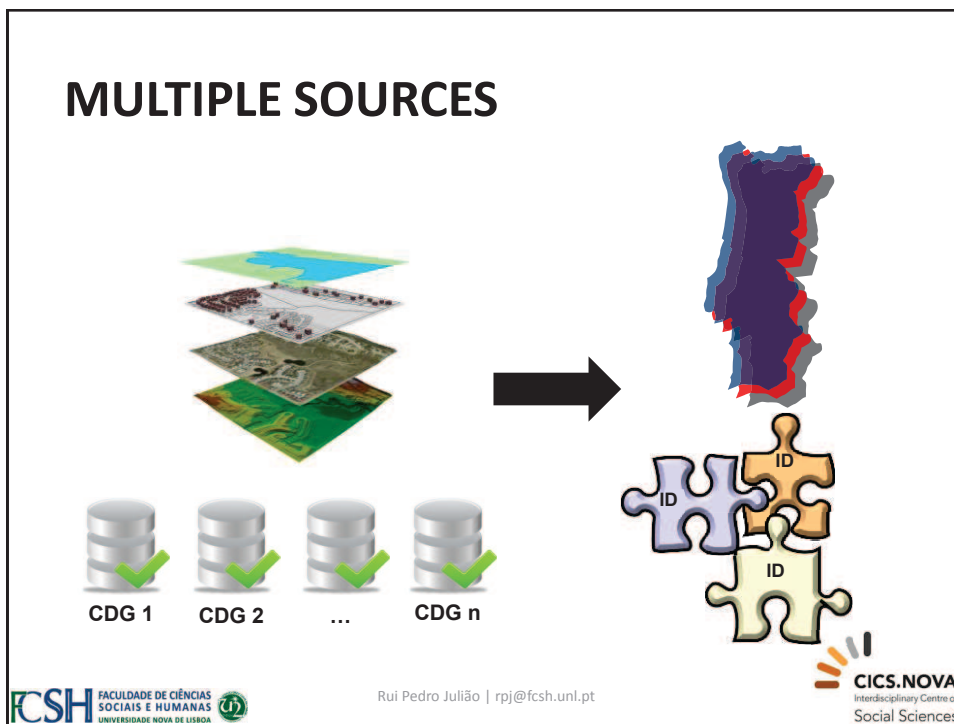


CADASTRAL DATA

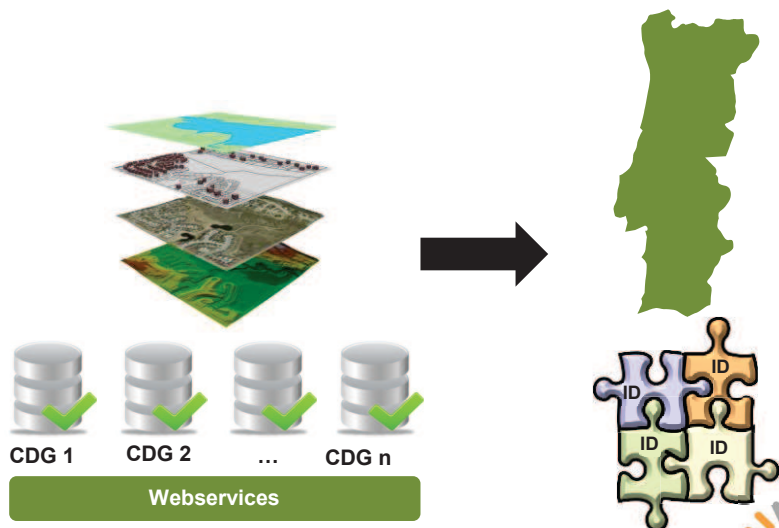
- **Simple**
 - Points, lines & polygons
 - Basic attributes
- **Complex**
 - Identification
 - Personal & administrative data
 - Public & private data
- **Expensive**
 - Field acquisition
- **Dynamic & volatile**
- **Multiple owners & stakeholders**







MULTIPLE SOURCES



SUPPORT & SOLUTIONS



SINGLE IDENTIFIERS

nnnnn/mmm 12345612345/123 245/2
 12345:123:1234 92001A0999/02R999 8736 0012 0257 09140300020017
 30133-123/45 44880090222 AB123 CCCCZFFFASPPPPBB
 123/123 123456xxxx/xxxx AMMMMMPPPPBBBCCCD APD00 F 2345
 CB45796 123A12345123456 1111,2222,333,444,555
 text-text nnn:nnnn 12345678 CH9999999999PP 123456 ABC123456
 XX1212341231234512312 12345-12-AB-1234-S-1234-AB PPMCCSSAAA
 12345/678 4ae123456(7)1(234)(abc)

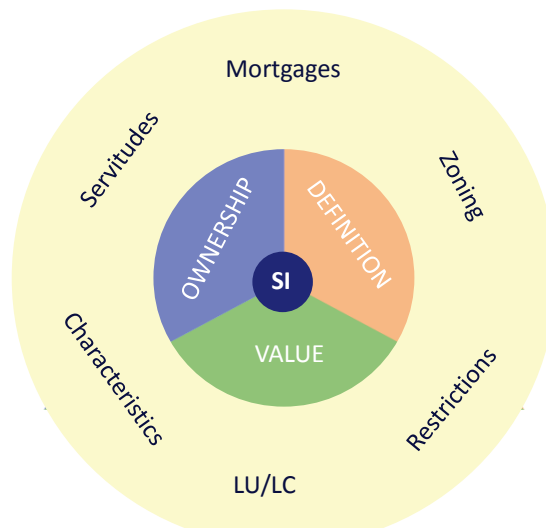
Eurogeographics, 2008



Rui Pedro Julião | rpj@fcs.unl.pt



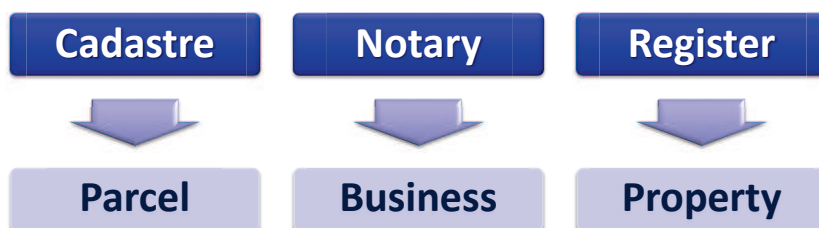
SINGLE INFORMATION



Rui Pedro Julião | rpj@fcs.unl.pt



SECURITY/TRUST



PUBLIC AGENTS AND BUSINESS MODELS

- Shouldn't we have:
 - higher **coordination of public investment**, in order to ensure the existence of a quality and continuously updated strategic spatial data sets
 - greater **decentralization** of the production process of basic vector spatial data sets directly involving municipalities or municipal communities
 - better **conditions of access** to strategic spatial data sets and services that promote their effective public use, creating added value, and support research and teaching
 - greater use and integration of the **participatory contribution** of Citizens (direct or indirect / individual or collective)

CADASTRE 4.0 SOLUTION ?

USEFUL

AFFORDABLE

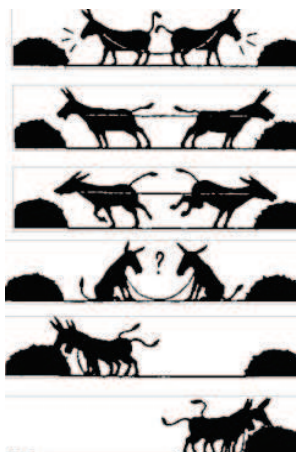
SUSTAINABLE

CADASTRE 4.0 SOLUTION ?

USEFUL

AFFORDABLE

SUSTAINABLE





SDI and Cadastre
Bridging gaps in Public Administration data
Geoconference
"Cadastre 4.0 - Transparency-Participation-Collaboration"
FIG Commission 7
Outubro 2016

Rui Pedro Julião
rpj@fcsh.unl.pt