

# PLANNING FOR AGING NEIGHBORHOODS

## CHALLENGES IN (RURAL) GERMANY AND SMART (GEOSPATIAL) RESPONSES

---

Markus Schaffert  
Hochschule Mainz

Workshop Joint FIG Commissions 3 and 8  
PRATO, ITALY 20-21 JULY 2021

# A few thoughts beforehand

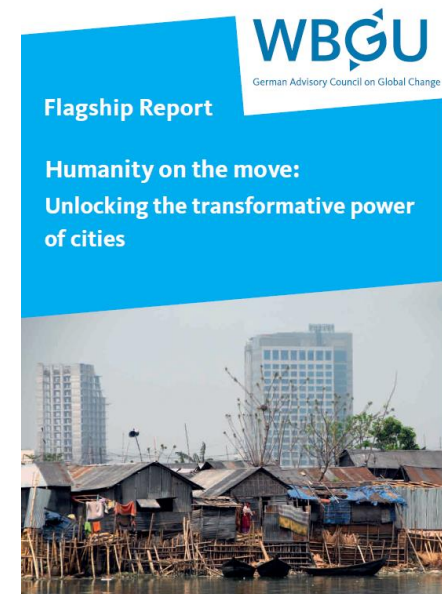
- Will the future of humanity be decided in big cities - and is sustainable development of cities the only thing that needs to be taken care of?
- Is urbanization and migration to the cities an unstoppable trend that can never change?

.....

## 1. The century of the cities

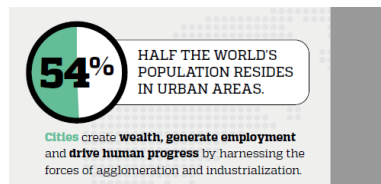
The 21st century will be the century of the cities. Urban areas are becoming the central organizational form for almost all human societies. The global urban popula-

Source: Humanity on the Move: Unlocking the Transformative Power of Cities: Summary. (2016). Deutschland: WBGU German Advisory Council on Global Change.



# A few thoughts beforehand

- Well, the future is not written yet, crisis can disrupt trends, we have to be prepared for game changes to become/be/stay sustainable.
- We should not forget that planning sustainable rural areas can take pressure from urbanization. Spatial planning for cities alone would miss half of the story...



Source: UN-HABITAT. (2016). World Cities Report 2016: Urbanization and Development - Emerging Futures. USA: United Nations Fund for Population Activities.



**URBANIZATION AND  
DEVELOPMENT**  
Emerging Futures

- So let's have a look to rural areas...

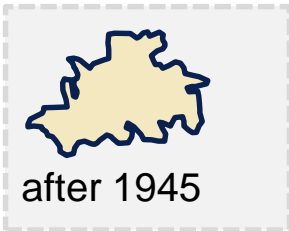
- 1. Single-family housing areas in rural Germany**
- 2. Geoinformation for dealing with the demographic challenge**

**Aim: Establishing a Monitoring for single family housing areas**

# Urban & village sprawl – typical pattern



before 1945



after 1945

*Fürth was mentioned 773 for the first time*



*Fürth Odw. 2015,  
aerial picture: google maps*



Aerial photo:  
Bing Maps 2017



# Germany's single family housing areas

*spreading since the 1950ies all over the old Laender*



Rbich, D. 2014 Wohngebiet Raiffeisenring in Bulder, <https://commons.wikimedia.org/> [CC BY SA 4.0](https://creativecommons.org/licenses/by-sa/4.0/)

~ 5800 inhabitants

# Generation change & aging of residents

in single-family housing areas

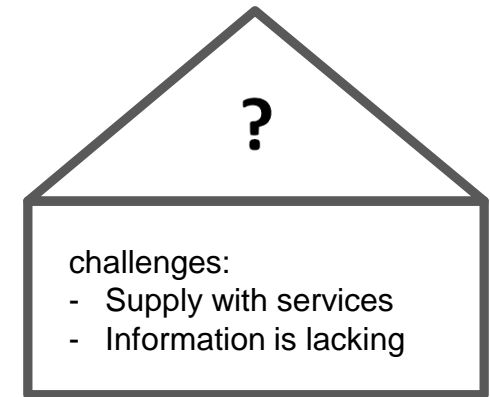
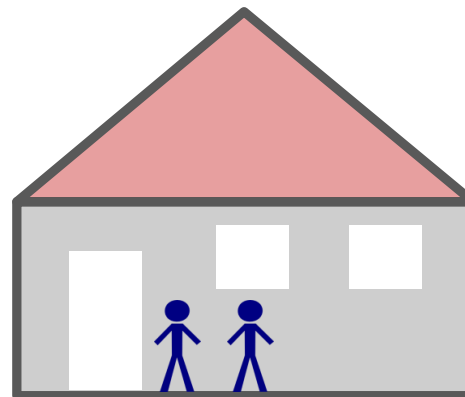
*long term vacancy?!*

*village 's image*

*drop in prices?!*

*retirement plans?*

*...on the way to a  
monitoring strategy*



1970



2020

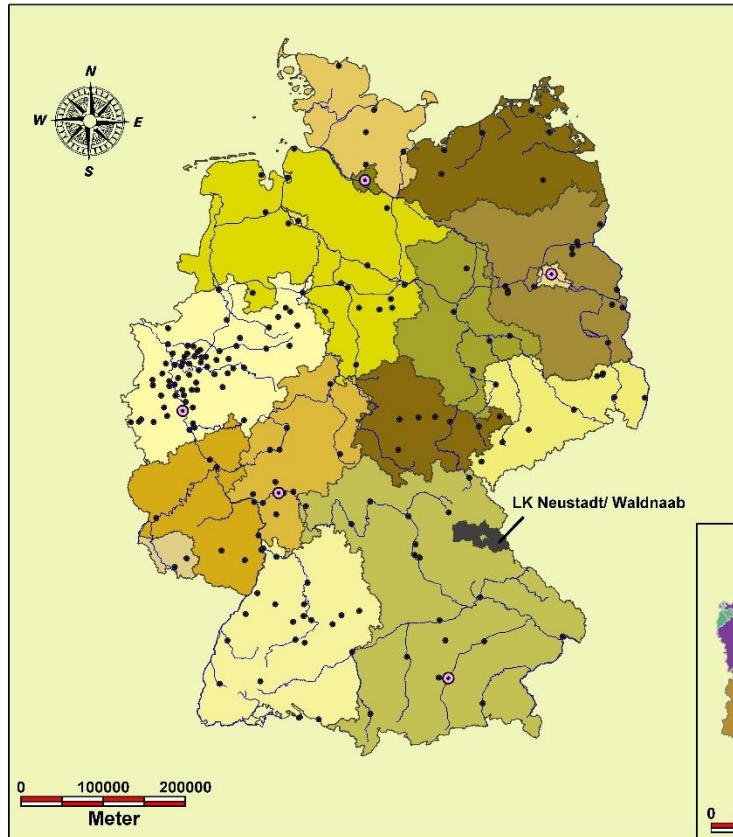


2050



# Case study – rural Bavaria

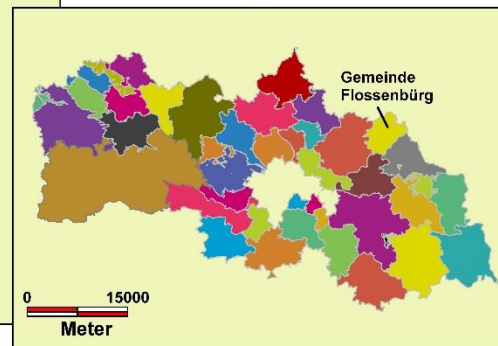
***Spatial Information Management to optimize Spatial Planning and Sustainable Development?***  
*Spatial Information that creates lacking information about single houses and demographic change!*



Schaffert 2011



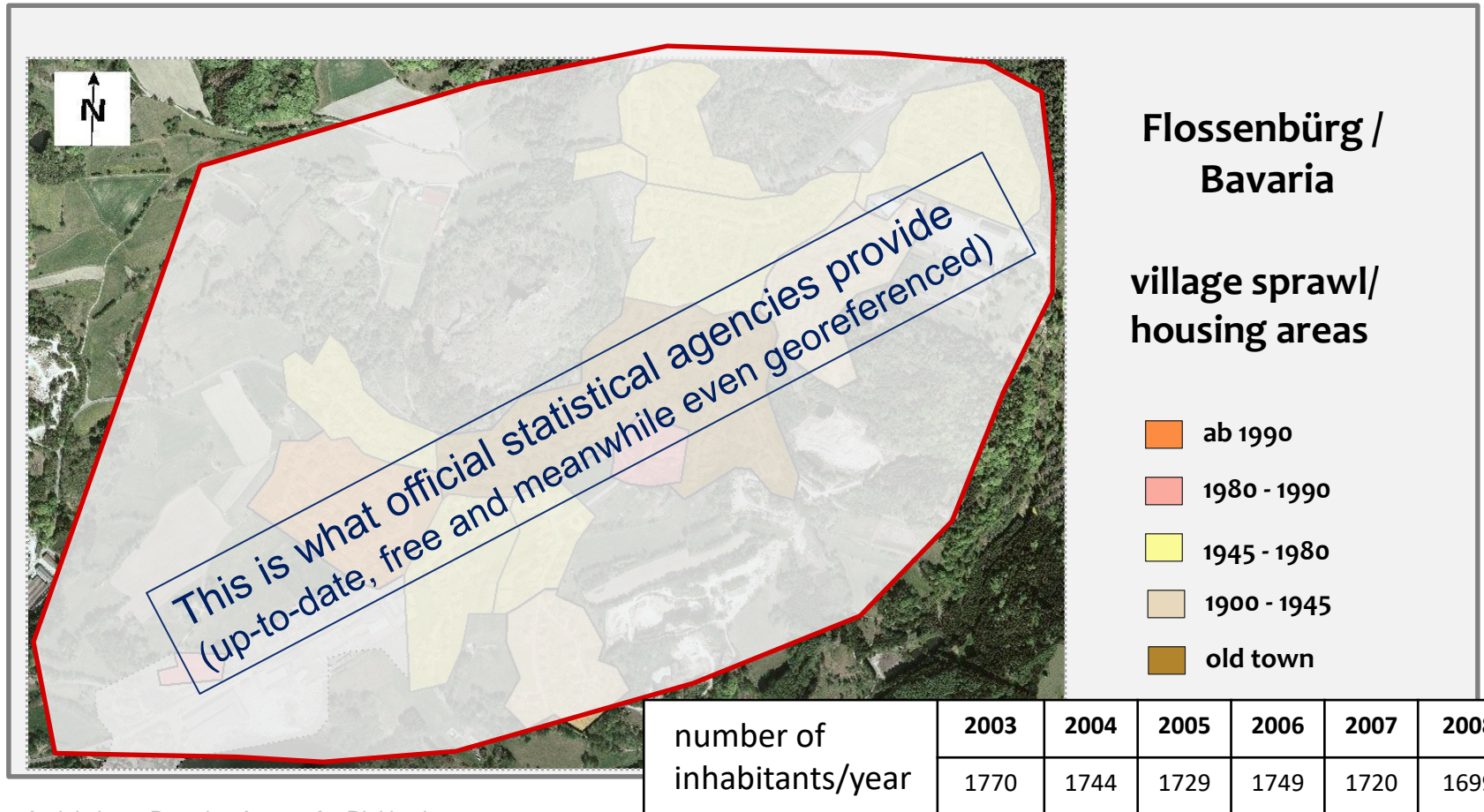
photo: Alois Köppel, Gleiritsch:  
Blick auf Flossenbürg (2014),  
[CC BY-SA 3.0](https://creativecommons.org/licenses/by-sa/3.0/), [www.wikipedia.de](http://www.wikipedia.de)



Base data: Bavarian Agency for Digitisation,  
High-Speed Internet and Surveying

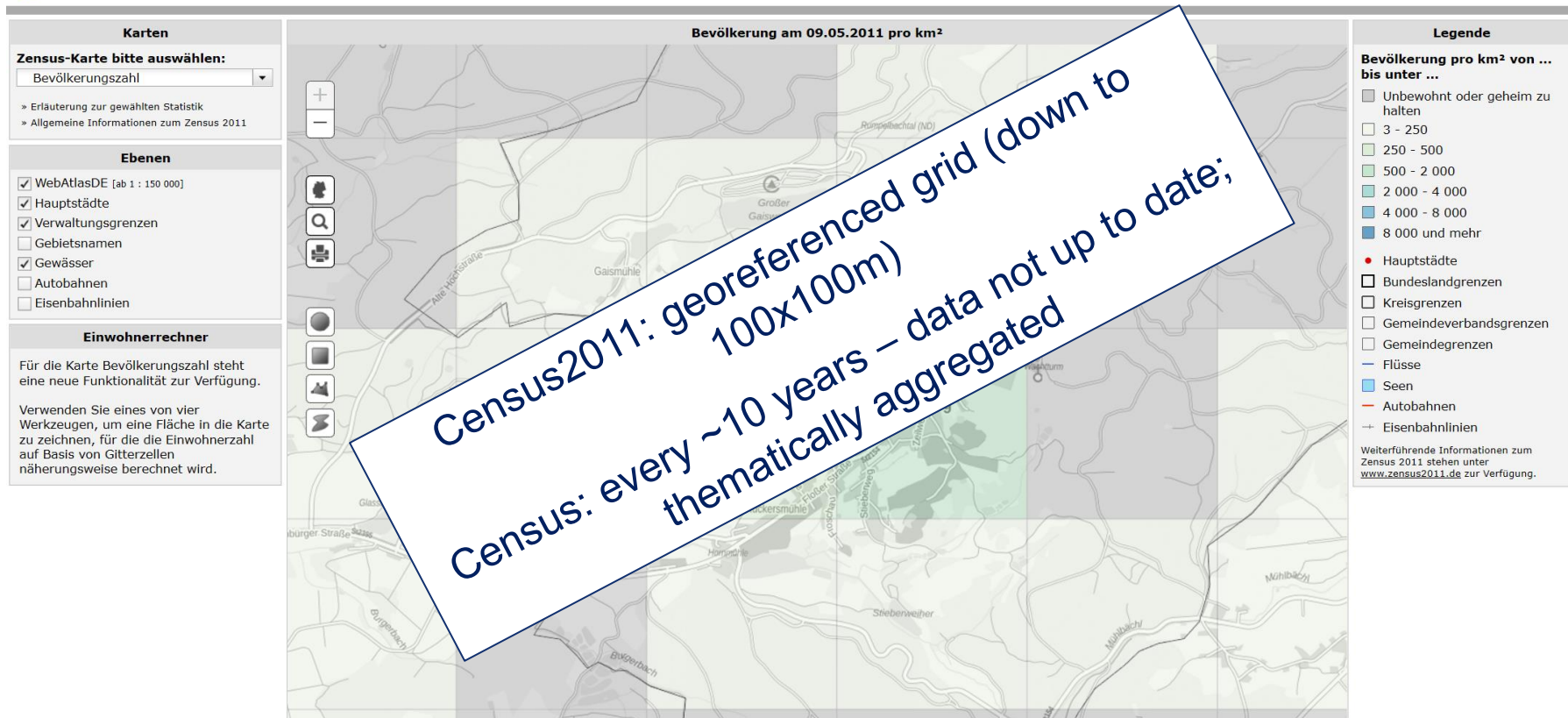


# Case study – rural Bavaria



Aerial photo: Bavarian Agency for Digitisation, High-Speed Internet and Surveying

# Case study – rural Bavaria



Census Data is a „new“ additional data product (Census took place in 1986 and 2011, next Census: 2022)

# Municipal population register can solve the problem

, but..

## Demographic Information of living population (no true values shown here: privacy issues)

Geburtsdatum	Geschlecht	PLZ	Ort	Ortsteil	Strasse	Hausnummer	Zusatz	Wohnungsart
18.03.1988	w	94269			Musterstr.	3		HW
12.03.1958	w	94269			Musterstr.	3	a	NW
12.05.1995	m	94269		Stadl	Musterstr.	12		HW
12.12.1965	m	94269		Grub	Musterstr.	13		HW

## Information about changes (birth, death, migration in/to/within)

Änderungsart	Ereignisdatum	Geburtsdatum	Geschlecht	PLZ	Ort	Ortsteil	Strasse	Hausnummer	Zusatz	Wohnungsart
ZUZ	10.03.2008	18.03.1988	w	94269			Musterstr.	3		HW
TOD	13.04.2017	12.03.1958	w	94269			Musterstr.	23		NW
UMZ	12.05.2009	12.05.1995	m	94269			Musterstr.	12		HW
WGZ	01.12.2005	12.12.1965	w	94269			Musterstr.	2		HW
GEB	02.12.1974	02.12.1974	m	94269			Musterstr.	3		HW

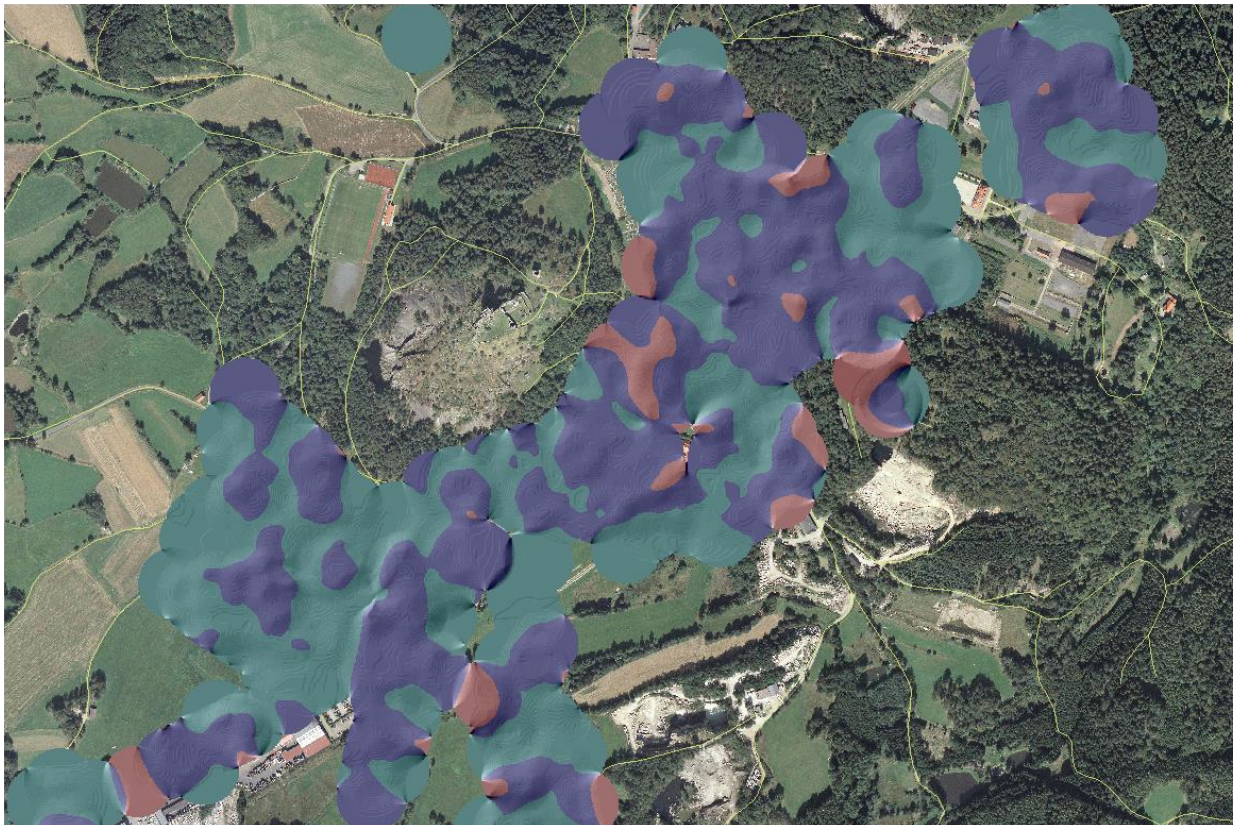
Every German municipality has a population register

not georeferenced

not ready-for-planning



# Age structure



using the  
Flossenbürgs  
population register  
for small scale  
population analyses

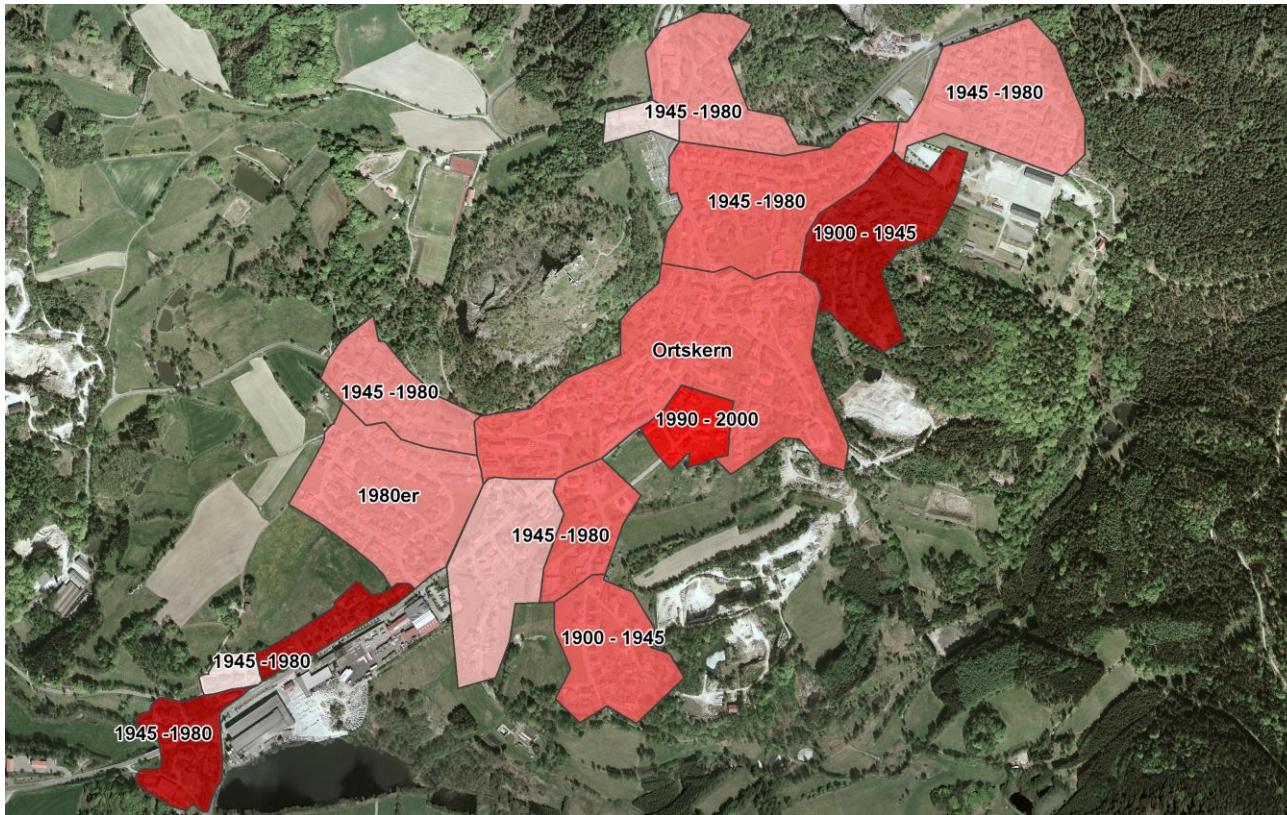
- 65 years or older
- 45-65 years
- 45 or younger

Schaffert 2011

Aerial photo: Bavarian Agency for Digitisation,  
High-Speed Internet and Surveying

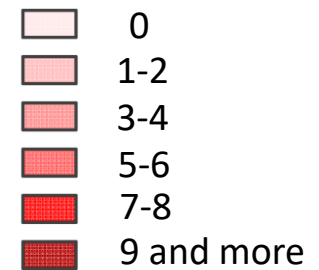


# houses endangered by vacancy



using the  
Flossenbürgs  
population register  
 for small scale  
 population analyses

**Share of houses with  
 vacancy risk\* / per  
 neighbourhood**



\*inhabited by 1 or 2 persons being  
 65 years or older

Schaffert 2011

Aerial photo: Bavarian Agency for Digitisation,  
 High-Speed Internet and Surveying



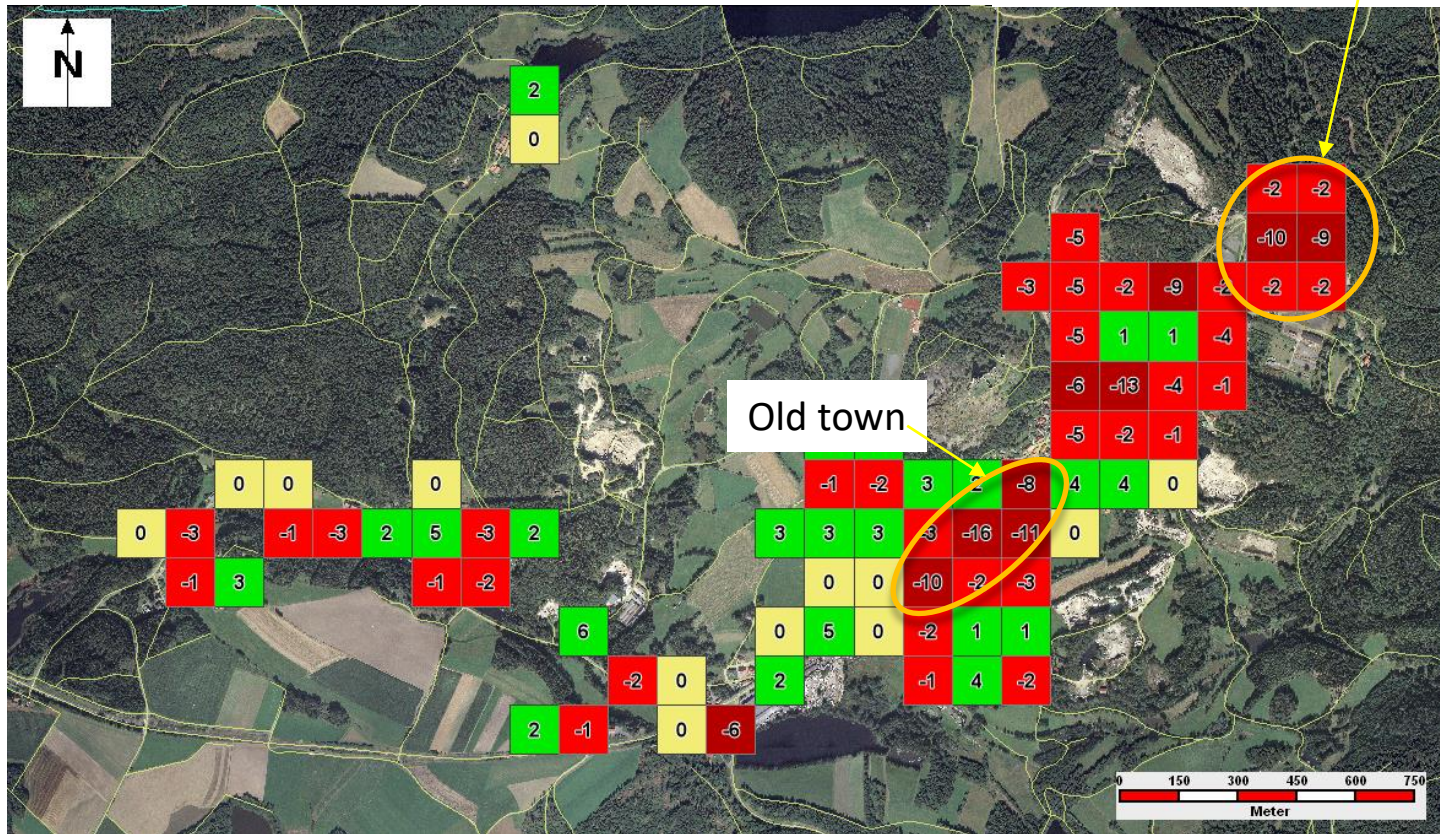
# (intra-urban) net migration

Single family housing area  
1945-1980

using the  
Flossenbürgs  
population register  
for small scale  
population analyses

resident loss between  
1999 und 2009

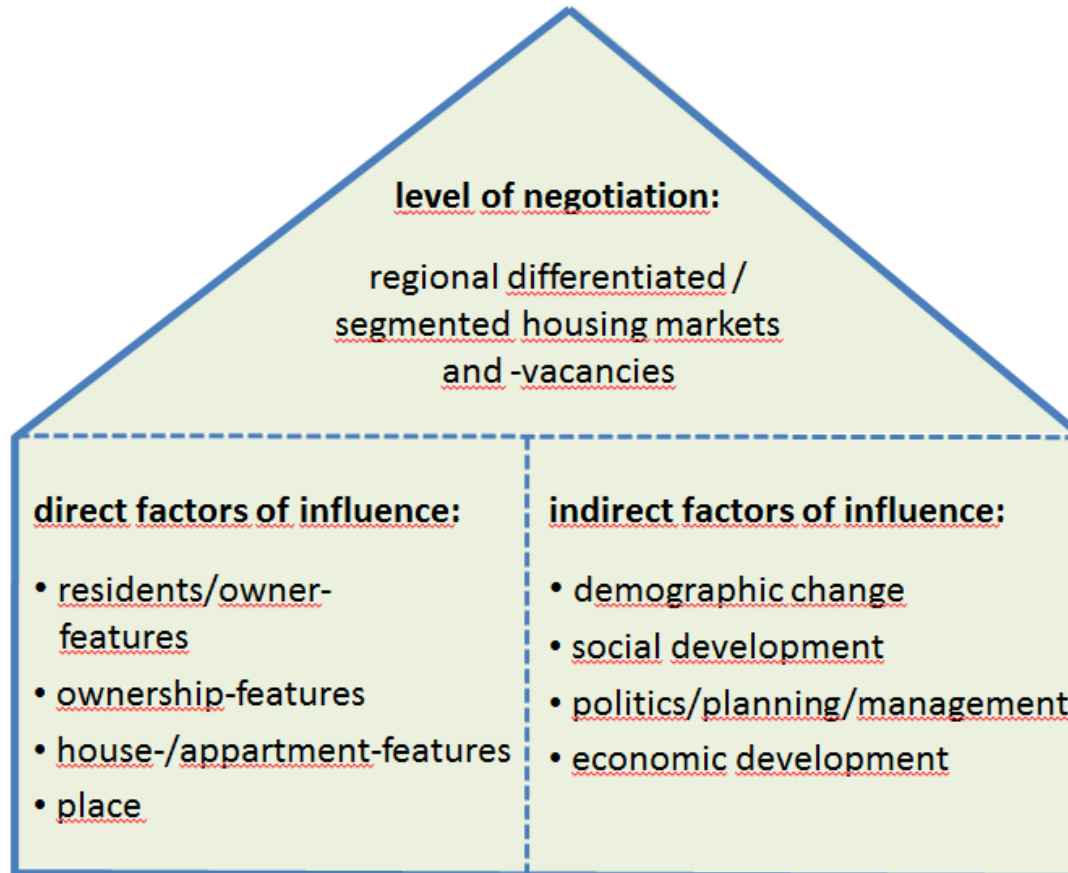
- 6 persons and more
- 1 untill - 5 persons
- +/- 0 persons
- +1 bis + 5 persons



Schaffert 2011

Aerial photo: Bavarian Agency for Digitisation,  
High-Speed Internet and Surveying

# Monitoring SFH. Factors of Influence



Schaffert 2011





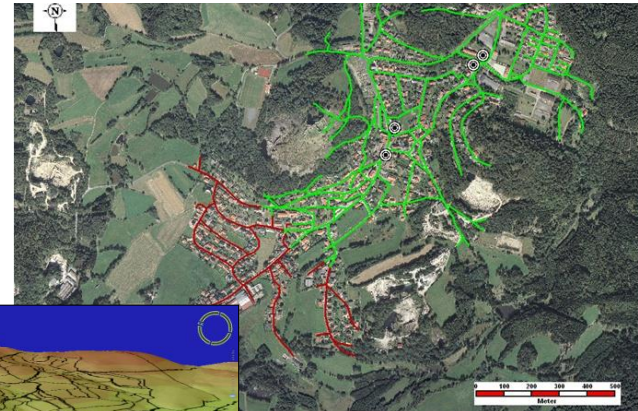


# Direct Factors of Influence



Flossenbürg/Opf.

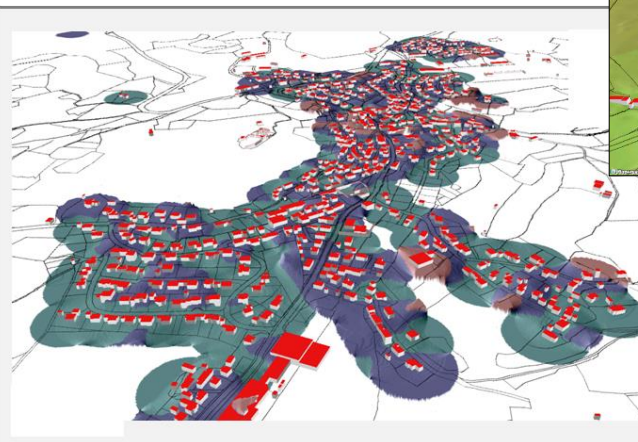
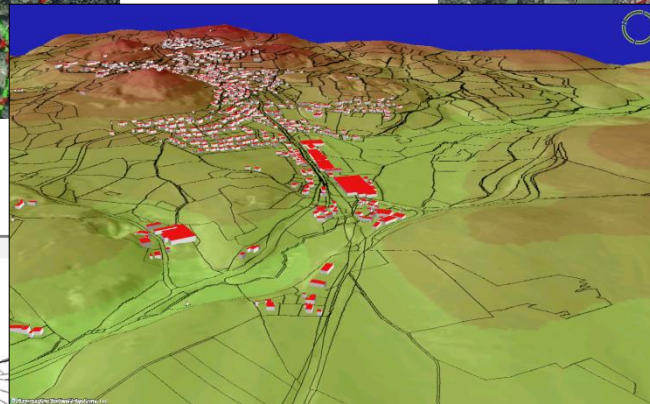
Steigungen der begehbaren Wege - nach Abschnitten (basierend auf 5m Raster)



Flossenbürg/Opf.

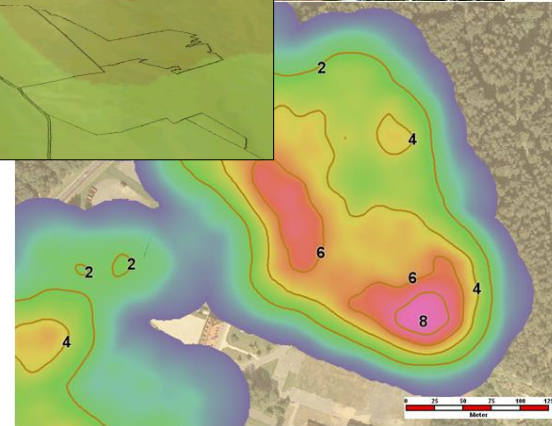
Erreichbarkeit der Grundversorger (Bäcker/Metzger, Supermarkt)

- <= 500 m Entfernung
- > 500 m Entfernung
- Versorgungseinrichtung



— „Altersberge“ mit Flurstücken und Gebäuden (Stand 01.08.2009)

- über 80 Jahre
- 65 bis 80 Jahre
- 46 bis 65 Jahre
- unter 45 Jahre



Flossenbürg/Opf.

Gebäude in einem Umkreis von 25 m<sup>2</sup> um die jeweils betrachtete Rasterzelle (Auslösung 1 m)

- 2
- 4
- 6
- 8
- Linie gleicher Bebauungsdichte

Schaffert 2011

Base data: Bavarian Agency for Digitisation, High-Speed Internet and Surveying

**Future Work:** → monitoring of Single-Family-Housing-Areas in an intra and supra-communal setting (e.g. county-wide, with regards to generational change and an areas resilience)

- Weighting of indicators (and their spatial differences) and combining them according to the weighting
- Providing this information in a supra-communal/ regional spatial data infrastructure
- Future work will be done in the project RAFVINIERT



Funded by Carl-Zeiss-Stiftung

1.4.2021 – 31.3.2024

## References

- Schaffert, M. (2011). Szenariotechnik und GIS: ein Beitrag zur demographierobusten Planung in Kommunen. Deutschland: Techn. Univ., Geodätisches Inst. (Ph.D.-Thesis).
- WBGU (2016). Humanity on the Move: Unlocking the Transformative Power of Cities. Deutschland: WBGU German Advisory Council on Global Change.
- UN-HABITAT. (2016). World Cities Report 2016: Urbanization and Development - Emerging Futures. USA: United Nations Fund for Population Activities.

Progress of the project RAFVINIERT can be tracked here:

<https://www.researchgate.net/project/Raumintelligenz-fuer-die-integrierte-Versorgung-von-Senioren-in-laendlichen-Quartieren-RAFVINIERT>