

The background of the slide is an aerial night view of a city skyline, likely Kuala Lumpur, featuring prominent skyscrapers like the Petronas Towers. The scene is overlaid with a complex network of glowing digital lines in various colors (blue, purple, red, green) that represent data connections and network infrastructure. The lines are most dense in the foreground and middle ground, creating a sense of depth and connectivity.

Country report from South Korea and LX

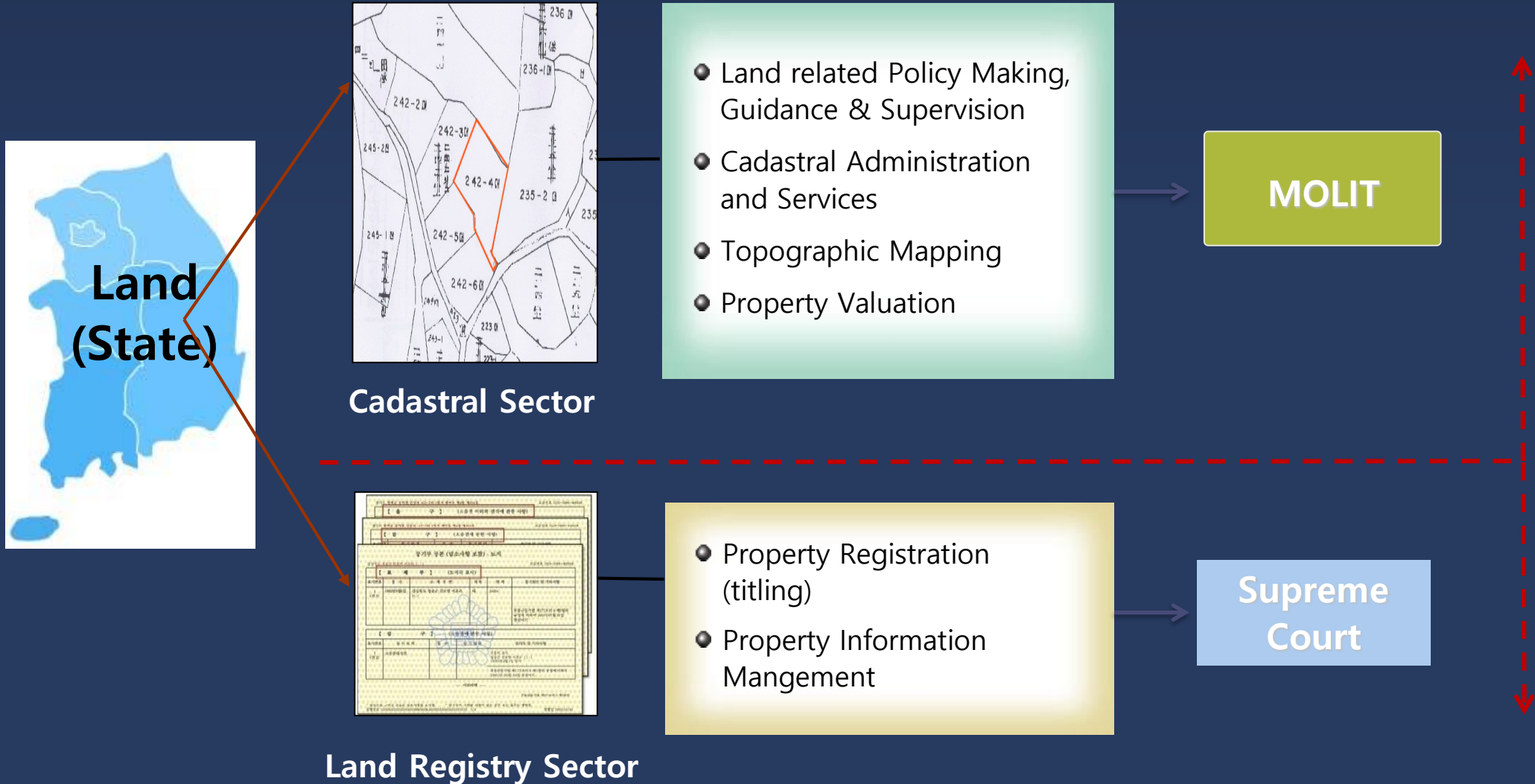
Jeong o Kim
LX Cadasteral Business Dept.

Land in South Korea

- Area: 100,188 Km²
- Land use
 - Forest (65%)
 - Agriculture (21%)
 - Residential & Commercial (3%)
 - Road & Rail (3%)
 - Other (8%)
- Population: 51 million
- Population Density: 513/Km²
- Parcels: 37 million
- Cadastral Maps: 748,000 sheets



Current LAS in Korea



Introduction of LX



- Established in 1977
 - A legal entity under the Public law (National Spatial Info. Act)
 - A public entity under the jurisdiction of MoLIT*

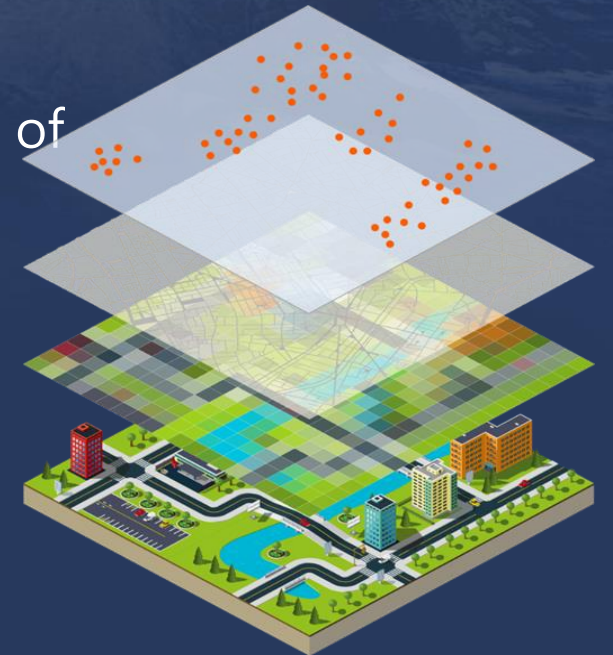
* MoLIT: Ministry of Land, Infrastructure and Transport

- 4,611 employees with 12 local headquarters and 169 branch offices nationwide
- Land Information Institute & Geospatial Information Research Institute.
- Over 1 million parcels are surveyed every year
- Utilize internally developed Survey Information Management System



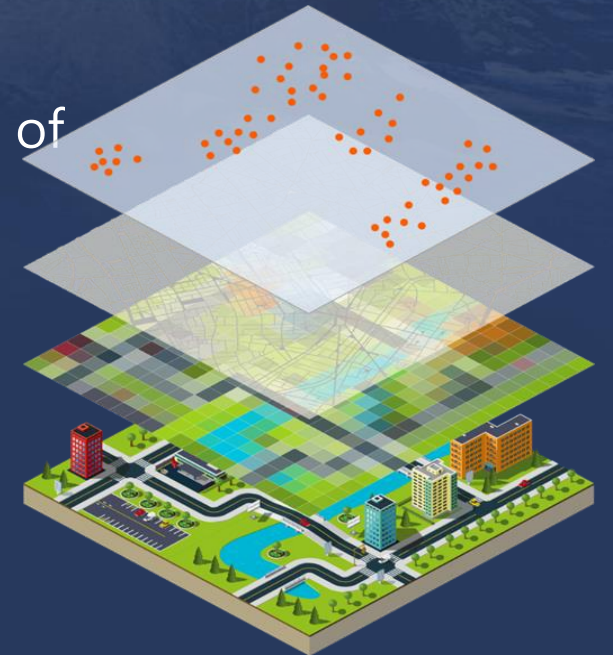
Major Activities

- **Cadastral surveying** (including cadastral resurvey)
- **Geospatial Information Services**
- **Overseas Projects**
- **R&D** (for improving Spatial Info. and Cadastral Systems)
- **Consulting Services** (Land Admin. & Management, Implementation of New Geospatial Tech.)
- **Education & Training**



Major Activities

- **Cadastral surveying** (including cadastral resurvey)
- **Geospatial Information Services**
- **Overseas Projects**
- **R&D** (for improving Spatial Info. and Cadastral Systems)
- **Consulting Services** (Land Admin. & Management, Implementation of New Geospatial Tech.)
- **Education & Training**



THANK YOU

