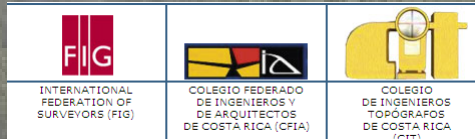


Closing Address

Prof. Stig Enemark

 President

6th FIG Regional Conference
Coastal Areas and Land Administration - Building the Capacity
San José, Costa Rica,
12–15 November 2007



Three Main Themes

- Coastal Zone Management
- Land Administration
- Capacity Building

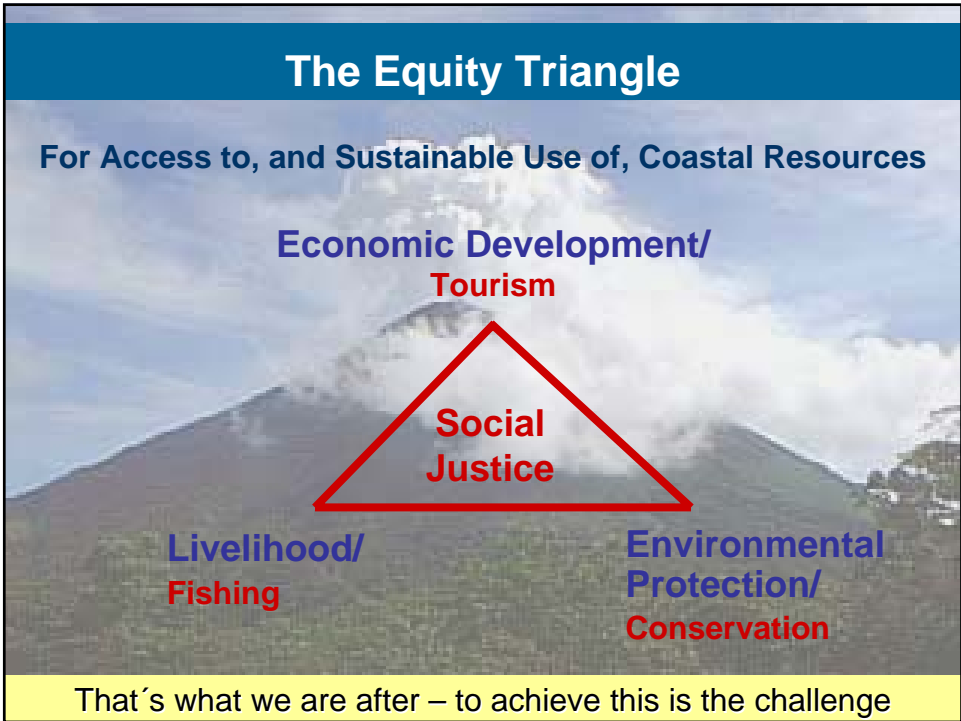
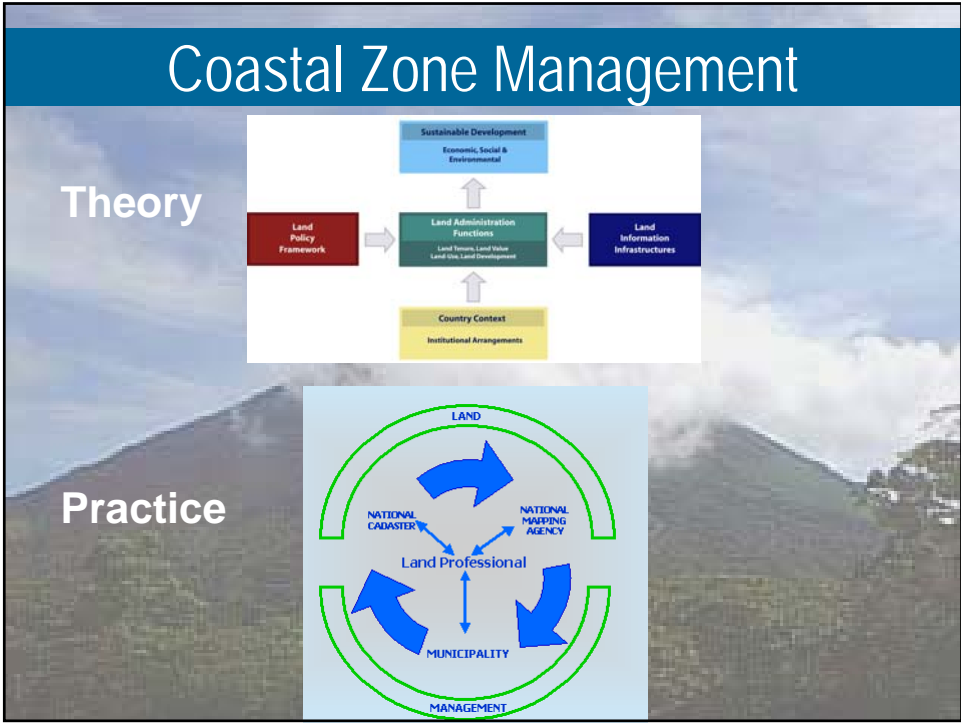


Coastal Zone Management

- Society across the world is moving towards the coast
- The Coastal Zone is dynamic, change is a constant
- Development without exclusion of anyone group or use
 - We need to ensure social justice – both extreme poor and very rich occupy the coastal zone
 - We need to find an equitable balance between conflicting priorities, between rich and poor and
 - It's a real issue in Costa Rica and in many other parts of the world

Coastal Zone Management

- Why is the Coastal Zone so important?
- Highly vulnerable due to:
 - Dynamic change (climate, population....)
 - Multipurpose uses (land/sea interface)
 - Tourism
 - Ecology / biodiversity
 - Traditional occupation/livelihoods
 - Land and hydrographic rights and restrictions
- The result is most often an imbalance – and leads to conflict



Coastal Zone Management

- We have a duty of care to the citizen, to use our professional skills to benefits society as a whole.

No Activity should take place in the Coastal Zone without the footprint of a Surveyor being involved

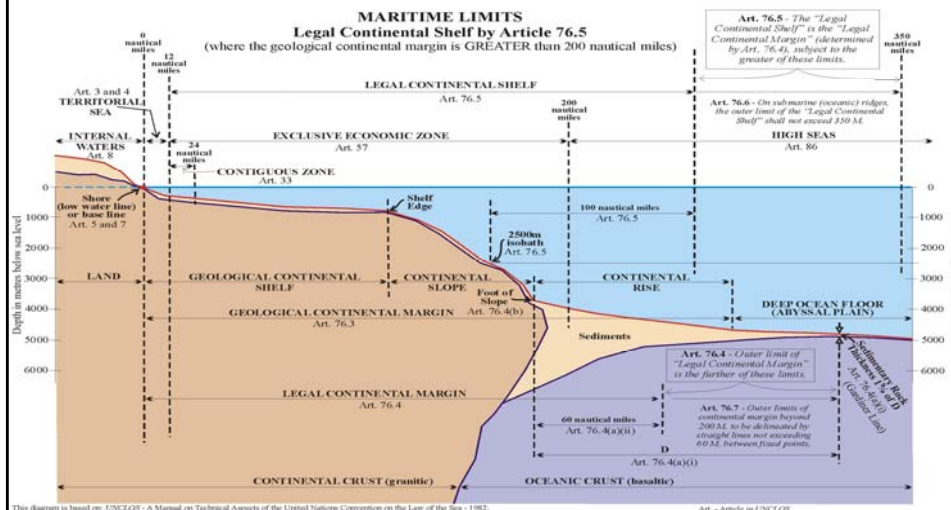
Surveyors should not be seen as only technical people

- Surveyors need to engage with
 - Other professionals and professional bodies
 - National and International bodies
 - Politicians at all levels

Coastal Zone Measurement

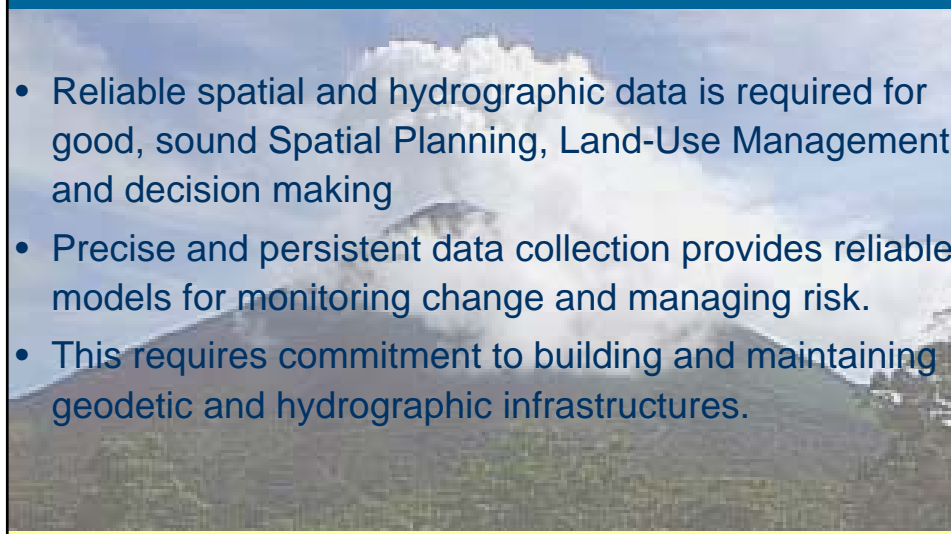
- Surveyors need to use there technical skills to collect and collate data:
 - Geodetic
 - Hydrographic,
 - Cadastral
 - Spatial Data Infrastructures
- Collection of data is now easier, but the assessment, interpretation and management requires skilled professionals

Coastal Zone Measurement



The nature of the land/sea interface is dynamic.
The role of the land surveyor do not end at the waterline.
 Tanah Air', Malaysian expression for 'Homeland' translates to land and sea.

Coastal Zone Measurement



“Good Coordination begins with Good Coordinates”
 David Doyle

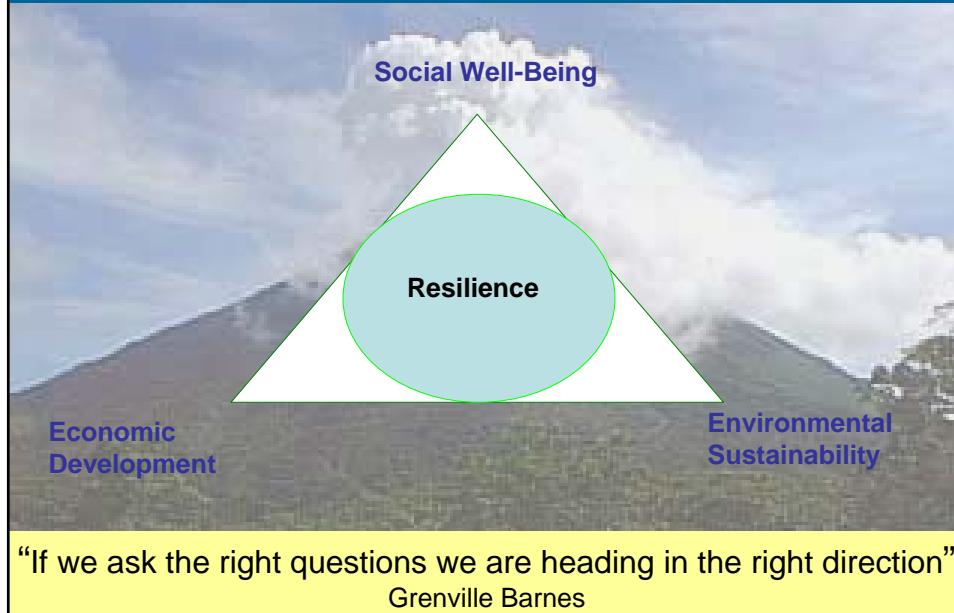
Land Administration

- A modern Cadastre integrates the Cadastre and Land Registry. It must provide:
 - Sustainability and affordability
 - Access to all users (including rural outreach: e.g. access via web and cell phones)
 - Low cost, transparent, and potentially autonomous.
- Reform of the institutions requires good information systems, good governance and political will

Land Administration

- Working towards Integrated Spatial Development
 - Do not over complicate systems – keep them simple and focused
 - Focus on Monitoring and Evaluation and get the baseline
 - Need for partnership and linkages across sectors
 - Link roles, rights, restrictions and responsibilities

Land Administration



Land Administration

- Sustainability = Maintaining the same
 - Resilience = Recognition of change, adaptability
 - Maintains relationship between space and time
 - The amount of change that a system can undergo while maintaining the same controls on structure and function
 - Resilience can be measured by the time the land administration system takes to return to pre-disaster status e.g hurricanes, flooding, etc
- A focus on change would mean a prioritisation of parcels that are being transacted and changed in the Land Market (Grenville Barnes)

Capacity Building

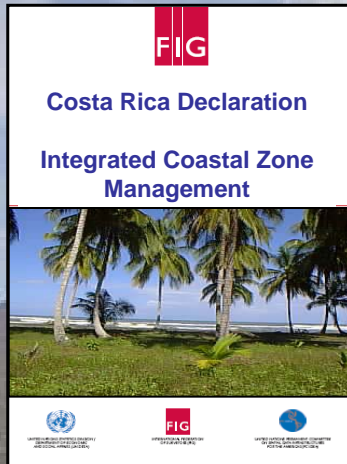


Capacity Building

- Surveying education must change from being seen very much as an engineering discipline
- Surveying education must be research based and interact with professional practice.
- Surveying education must be interdisciplinary to include Measurement Science, Land Management and Spatial Information Management
- Learning for life must be replaced by life long learning
- Professional organizations play a key role in providing professional development and regulating behavior through professional code of ethics

"Academia and professional practice
should walk together hand in hand"

Developing a Costa Rica Declaration



- Intention is to be launch at the FIG Working Week In Stockholm, Sweden, July 2008
- Developing the concept of Integrated and Pro Poor Coastal Zone Management
- Identifying the problems and issues related to CR and the Central American Region
- Analyzing these problems in the context of Pro Poor CZM
- Looking at recommendations and ways forward



Muchas Gracias Thank you

