

Building Integrated Land Information Systems and Development of NSDI

Stig Jönsson
Director General, Lantmäteriet

FIG Working Week 2008, Stockholm

LANTMÄTERIET



380 years of experience

Lantmäteriet has been mapping Sweden since 1628.



Strategic goals



- An organization that is well known, open and inspires confidence
- An attractive place to work
- A leading service authority

LANTMÄTERIET



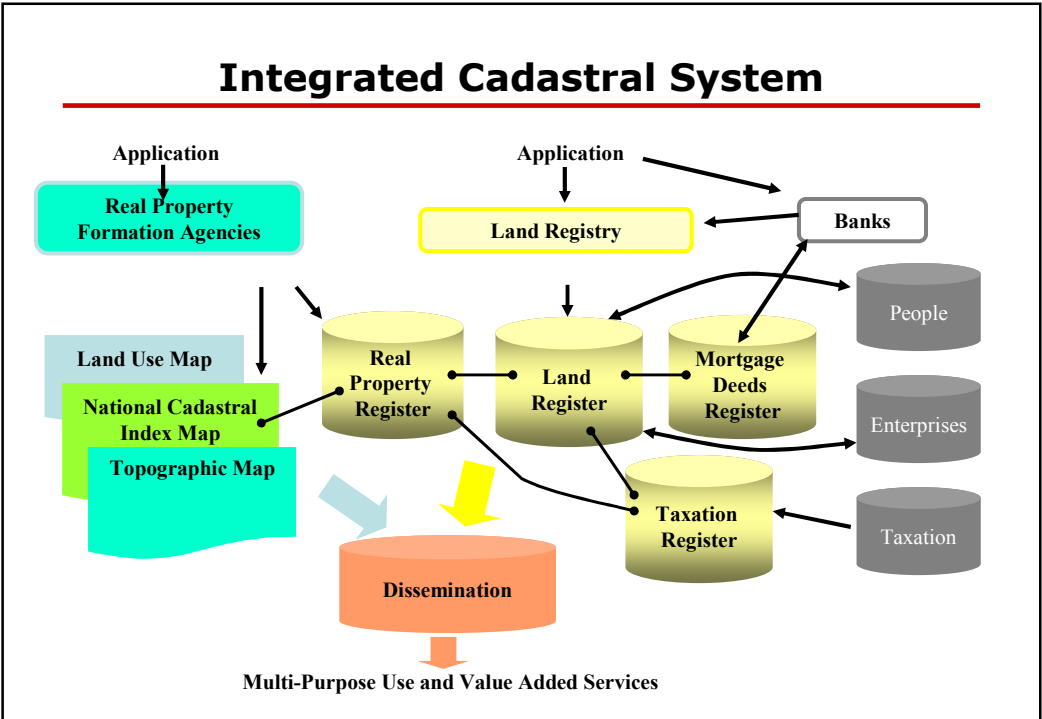
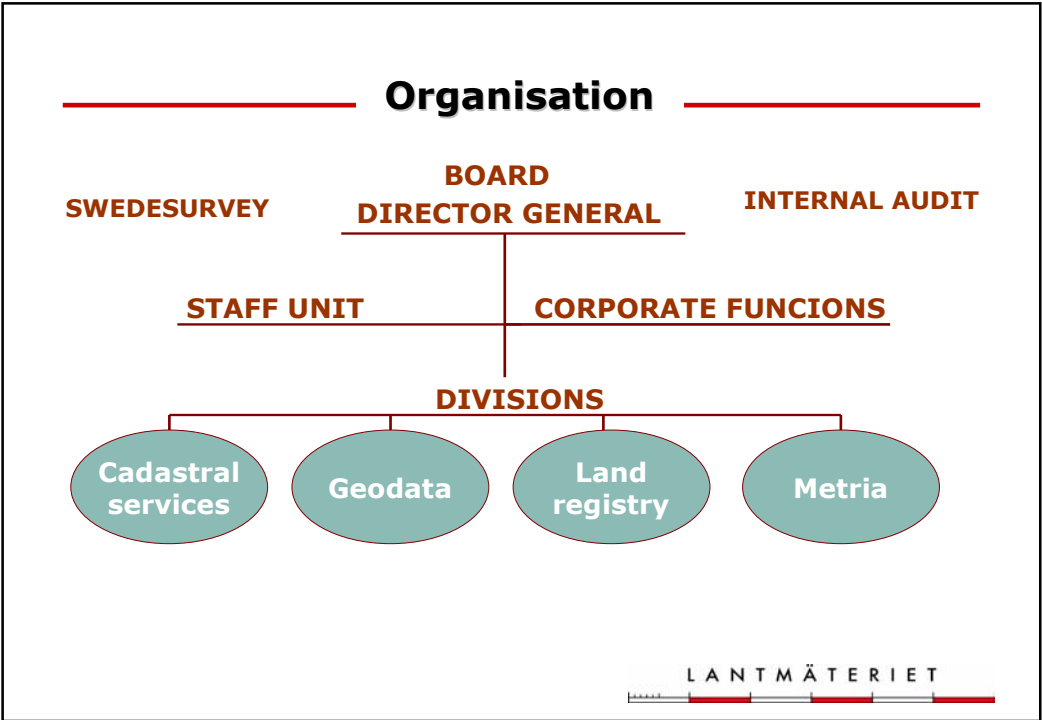
Directions



- Stronger SDI coordination
- Development of the real property formation processes
- Integration of land registration
- More focussed services on a repayment basis

LANTMÄTERIET





Cadastral services



The procedure is characterised by co-operation between the interested parties concerned and the authorised officer who conducts the procedure.

LANTMÄTERIET

New demands



Secure transmission of electricity by utility easement procedures and handling of corridors along the transmission lines in forest areas

Improve road safety by giving rights for setting up wire railings or to arrange reallocations when a dangerous crossing road is taken away

Secure land use rights for setting up wind turbines.

LANTMÄTERIET

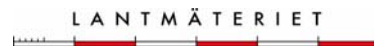
Digital archives



The archives consists of more than 2.5 million individual acts with totally over 50 million pages and maps.

The digitalization of the archives and the setting up of efficient access tools creates

- Cost savings within the real property formation process
- Satisfy the great interest from professionals and the public to get easy access to the information
- Reduce the costs for archives and maintenance of the documents.



My Real Property

Gävle Axmar 20:12

Allmän fastighetsinformation, Taxeringsinfor
09 Jun

Fastighet

Beteckning
Gävle Axmar 20:12
Nyckel: 210174568
Färsamling
Hamrånge

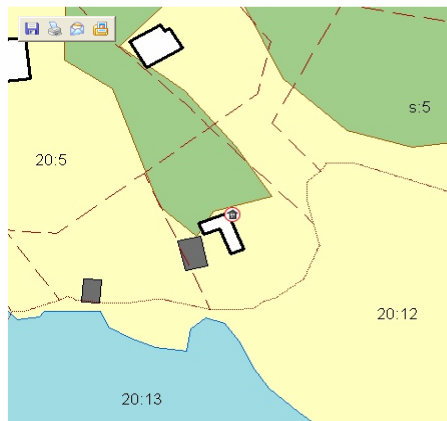
Senaste ändringen i
allmänna delen
2007-11-07

Senaste ändringen i
inskrivningsdelen
2005-05-10

Aktualitetsdatum
inskrivningsdele
2008-06-0



Översiktskarta



Kartbilden ovanför har inte rättsverkan. Mer korrekta tomtkartor kan finnas i akter under rubrikerna "Ätgärd" och "Rä

International market



Lantmäteriet is active on the International Market together with Swedesurvey AB. We have projects in about 30 countries



LANTMÄTERIET

Lantmäteriet -
in pole
position!



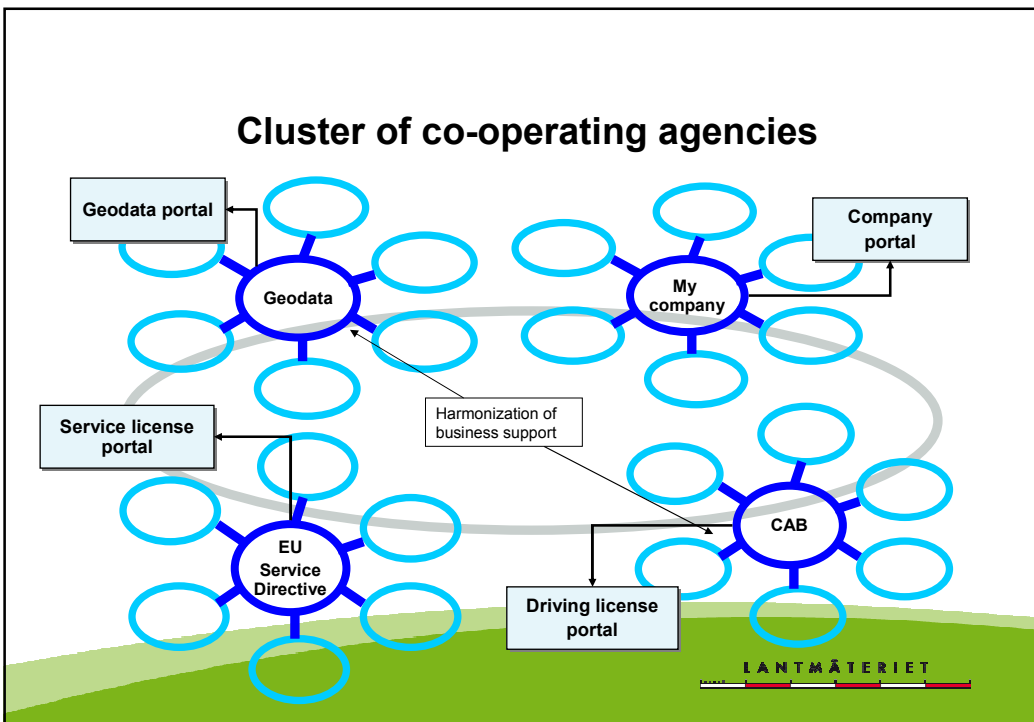
Strategic goal for Export of Services

Providing know-how and experiences in land management worldwide for sustainable development, poverty reduction and economic growth

LANTMÄTERIET

SDI and e-government

- Geodata is needed in critical functions of society
- Geodata is the backbone in e-government...
- ...70-80% of all public procedures includes a geographic component



Important decisions

- The coordinating responsibility of the National Land Survey of Sweden
- The Geodata Advisory Board
- A national strategy for the provision of data within the geodata field
- Government's action plan on e-Government



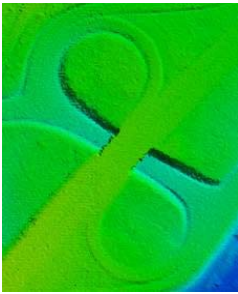
Action areas



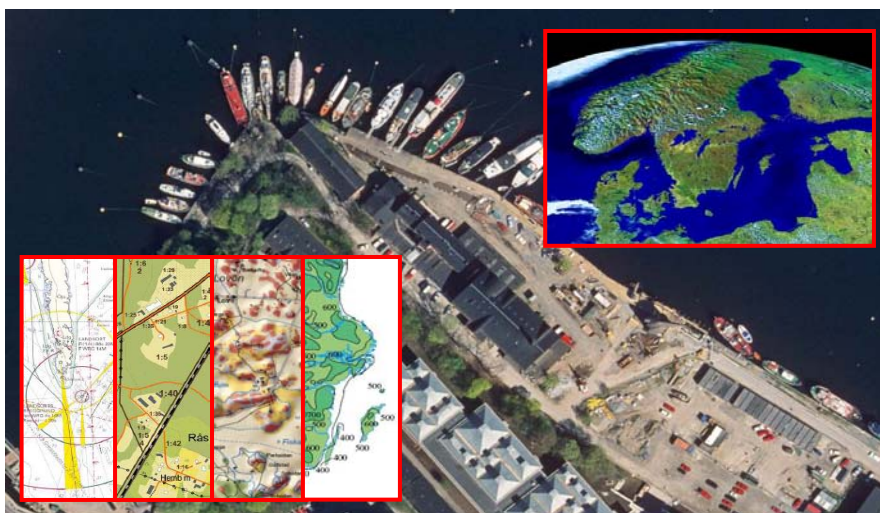
1. Cooperation in networks
2. Structuring the information
3. Technical infrastructure
4. National metadata catalogue
5. Geodetic reference system
6. Research, development and education
7. Legal framework
8. Financing and pricing

Increased cooperation

- The establishment of the Geodata project
- The development of a common business model
- User oriented
- Increase public/private cooperation
- Increase growth and competitiveness
- Common rules



LANTMÄTERIET



Coming soon: Swedish Geodata portal

LANTMÄTERIET

Cooperation – an important precondition!



We are on the way...

- A wide support
- Better understanding for the need of actions
- The EC-directive INSPIRE implies great demands
- Long-term approach
- Strong link to e-governance
- Willingness of the actors is crucial