



## Transforming land and property services

Iain Greenway  
Chief Survey Officer  
Land & Property Services



### Northern Ireland

- 1.5 million people
- 20,000 square kilometres
- Dominant public sector
- Limited local government functions
- Direct rule/ devolution



## Northern Ireland is changing....;



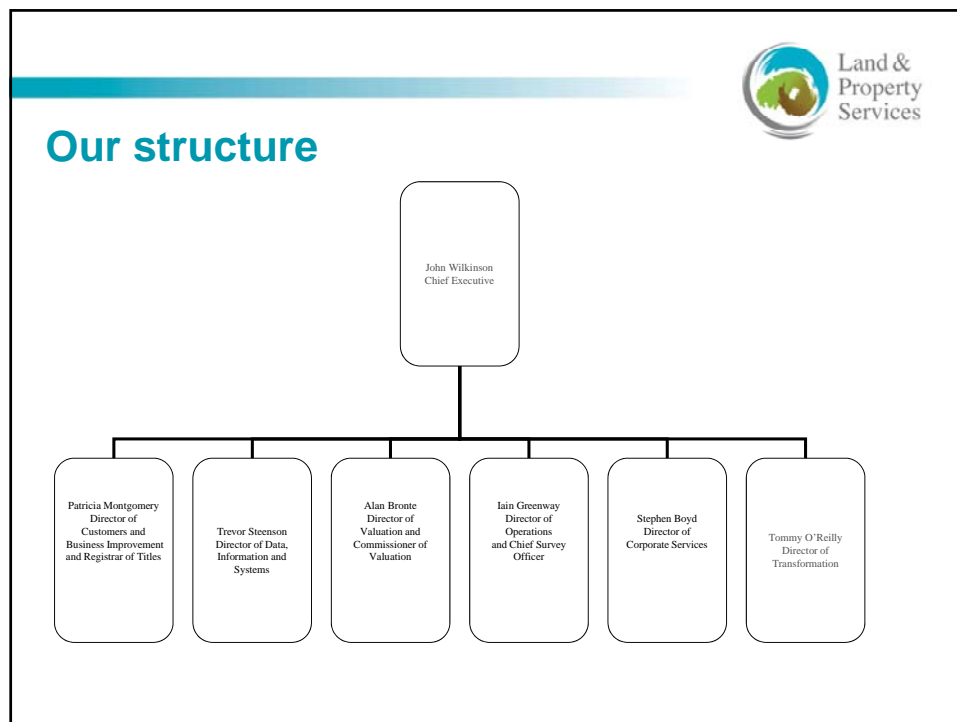
## Review of Public Administration

- Initiated in 2002
- Over-government?
  - 26 local authorities
  - 19 health service delivery bodies
  - 4 education and library boards
- Reported November 2005/ March 2006
  - ‘there will be a land and property services agency’



### Some facts and figures

- £1 billion of rates collected a year
- 60% of titles in the land register
- Mass appraisal of 700,000 domestic properties
- Self-funding mapping agency
- 1,100 staff in 4 organisations
- All with long histories, traditions and cultures



- 
- Priorities and challenges**
- Land & Property Services
- Far reaching rating reforms....
  - ....with accompanying IT replacements....
  - ....at the same time as the merger.....
  - ....in a very public arena



## Actions taken – 1

- Links with District Councils
  - 2-way
  - Strategic Steering Group
  - Collaboration
  - Memorandum of Understanding
- Links with Department of Finance
  - Revenue collection
- Revised purpose and commitment



## LPS' Purpose and Commitment

LPS supports the economic and social development of Northern Ireland through the consistent delivery of:

- a fair, efficient and timely valuation and rating service; and
- effective, high quality land registration, mapping and property information services.

Customers  
Leadership  
Ethics  
Accountability  
Results



## Actions taken – 2

- Service Delivery Model ('build to bank')
  - Focussed
  - Coherent
  - Prioritised
- Political links
  
- The work is starting to pay off



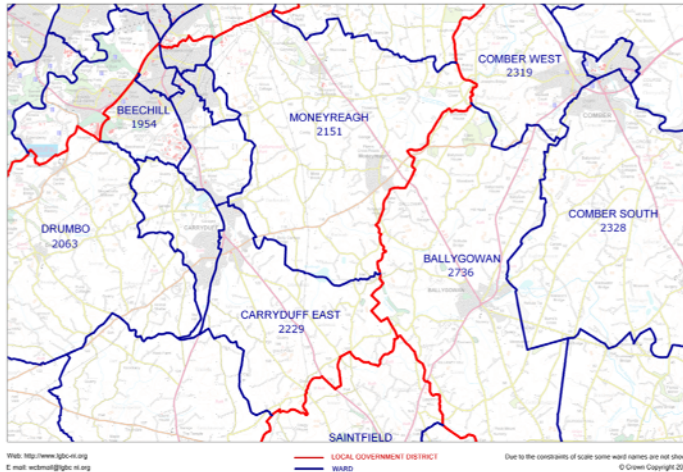
## Other parts of LPS

- Addressing
  - Pointer
  - Stakeholder Forum
  - 2011 Census
- Registration
  - Staff movements
- GI Strategy
  - GeoHub NI
  - New strategy
  - Collaborative approach



## Boundary review

**LOCAL GOVERNMENT BOUNDARIES COMMISSIONER FOR NORTHERN IRELAND**  
This map displays the proposed wards and their electorate totals within Lisburn City and Castlereagh District Council.

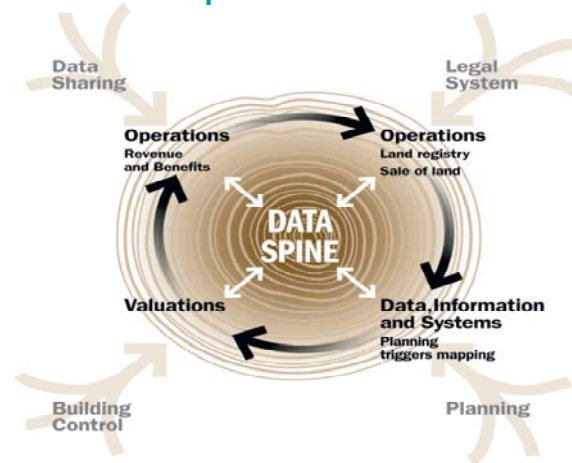


## GI Strategy 2009-19





## The Data Spine



## Lessons

- Powerful synergies can be released
- Time and effort are involved in merging
  - Development and Business as Usual
- LPS is a bigger organisation with a stronger role
  - Relationships are stronger
- Data improvement is the key remaining challenge
  - And data sharing is a sensitive area





## LPS.....

- Guarantees what you own
- Puts your property on the map
- Values your property; and
- Taxes it