



Ancient monuments

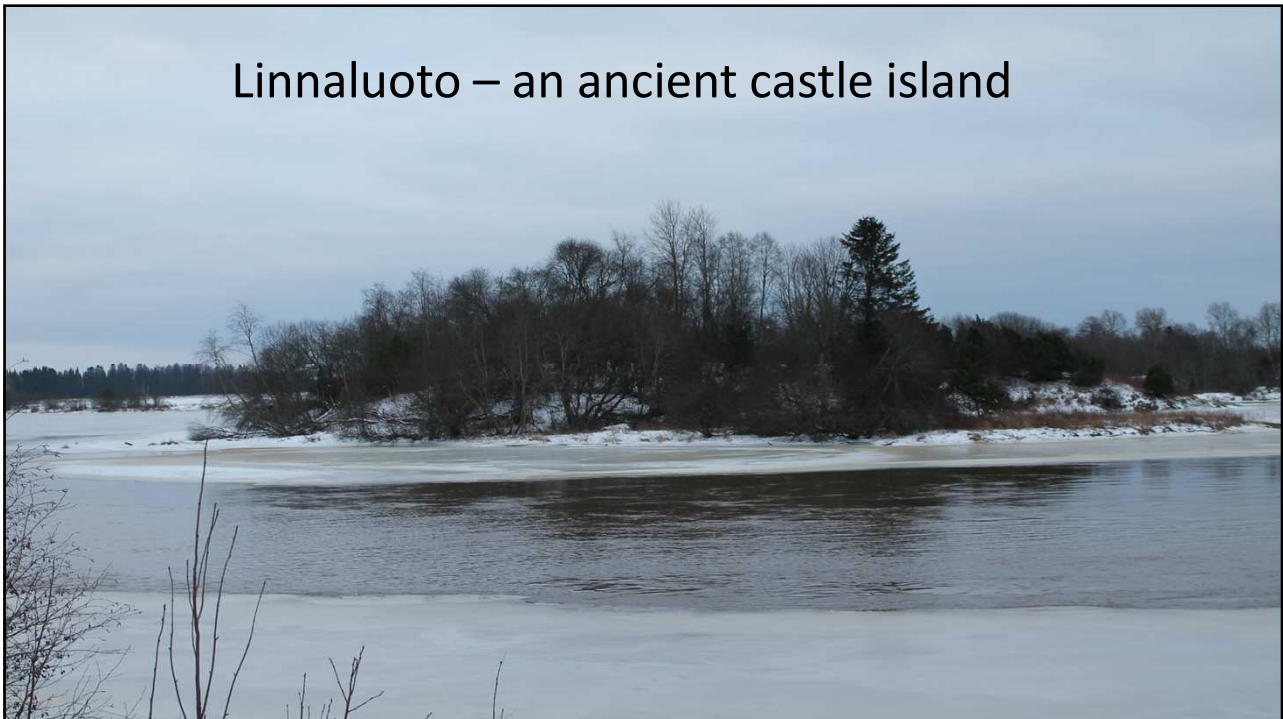
- Are protected areas due to the insight they give into the early habitation and history
- Till example they are:
 - Pagan era graves and cemeteries
 - Ancient rock paintings and writings
 - Places of worship
 - Ancient homes, workplaces, roads
 - fortresses
- Old boundary marks and measurement places may also be considered antiquities



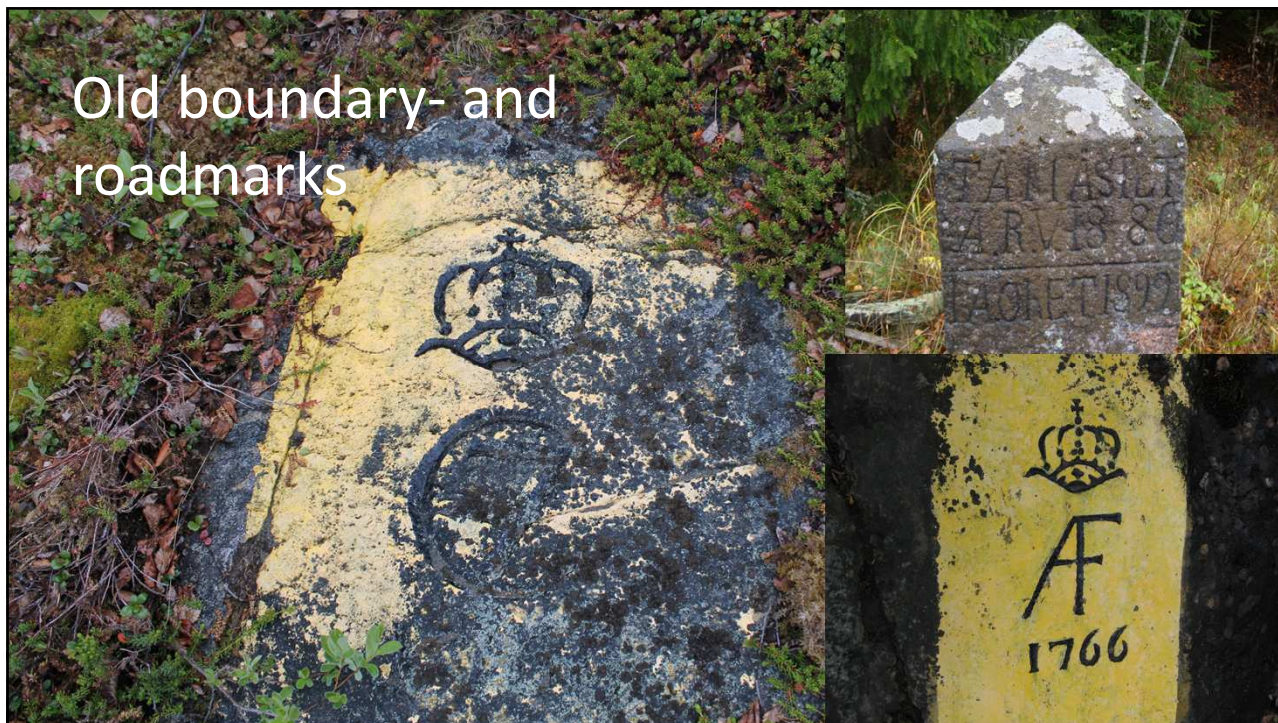
Sacrificial Stone



Ancient deer-hunting pit



Old boundary- and
roadmarks



Alatornio
church-tower
is one
protected
station point
of Struves
Geodetic Arc
In Finland

Picture: National Land Survey of
Finland

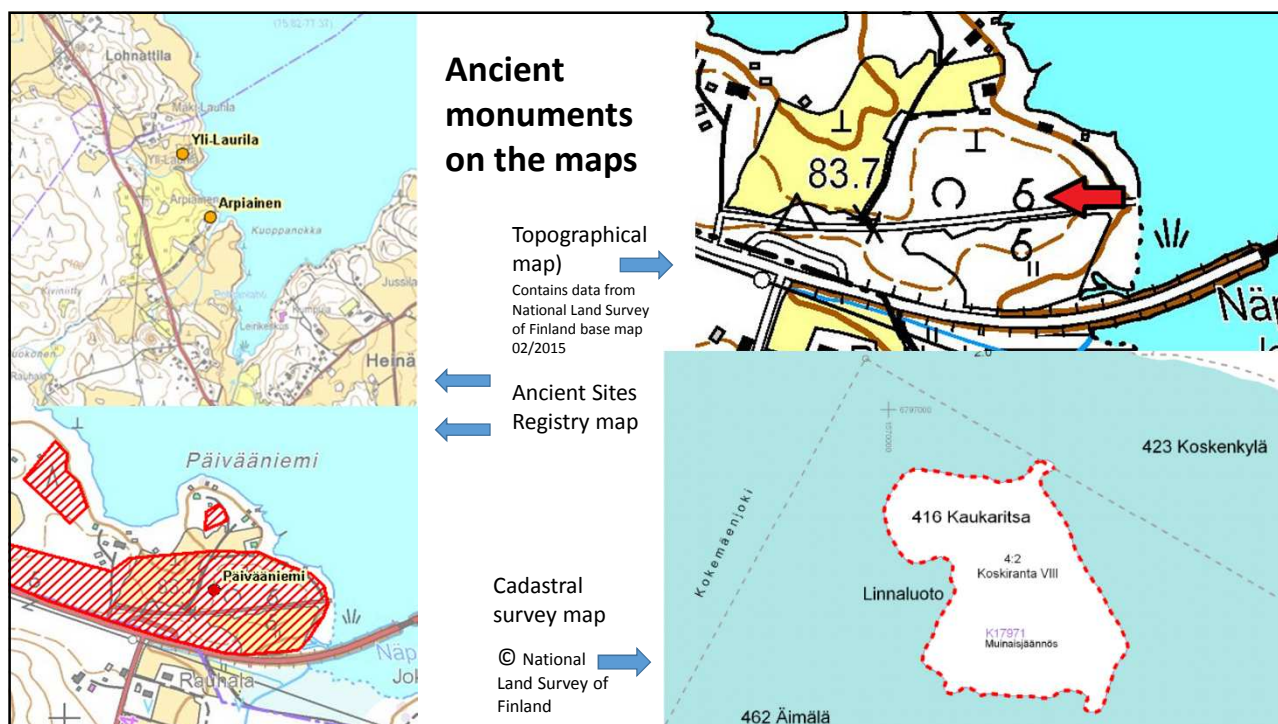
Protection of antiquities

- Without permission it is forbidden to excavate, cover, alter, damage or remove ancient monument or to disturb them in any other way
- If an ancient monument is discovered during earth excavation, work be immediately suspended and the find reported to the National Board of Antiquities or the provincial museum



Ancient Sites Registry

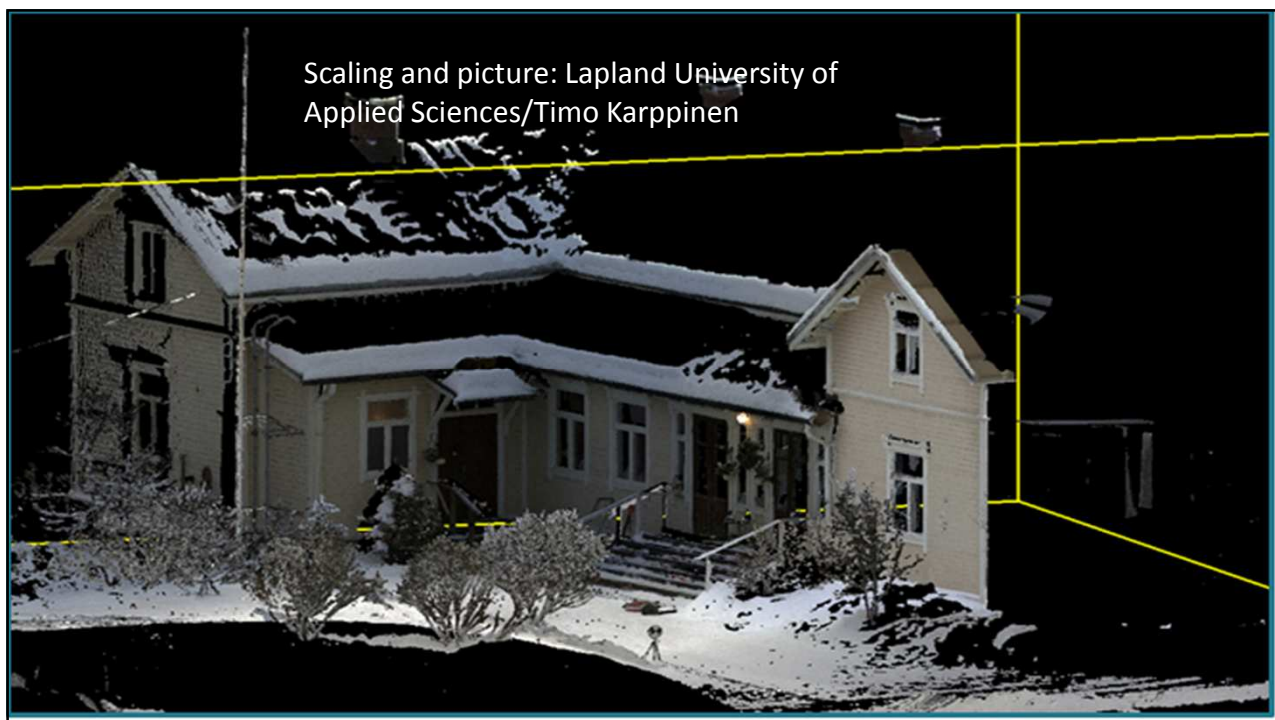
- Contains basic information of ancient monuments in continental Finland
- About 29 000 ancient monuments are registered
- 500-1000 more are registered every year
- Includes location of ancient monuments: point or regional location
- Ancient monuments are marked with points on topographical maps
- Where an ancient monument is in an area pending cadastral survey, the monument and its protective area must be mapped and marked on the survey map



Survey of antiquities

- Many sites require closer examination and survey
- Modern survey technology enables effective survey
- Scanning with unmanned drones and helicopters for preliminary surveys
- Mobile scanning along driving routes
- Multi-beam scanning on underwater sites
- GPS and tacheometry can be used to clearly outlined sites and determine exact coordinates





Threats of ancient monument

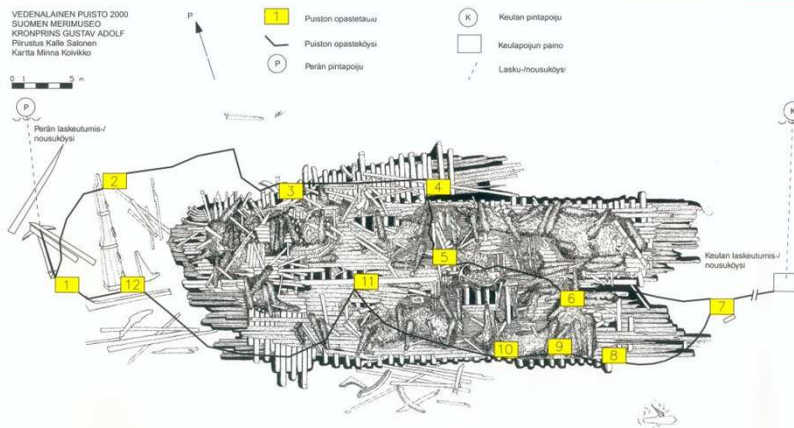


Picture:Yle

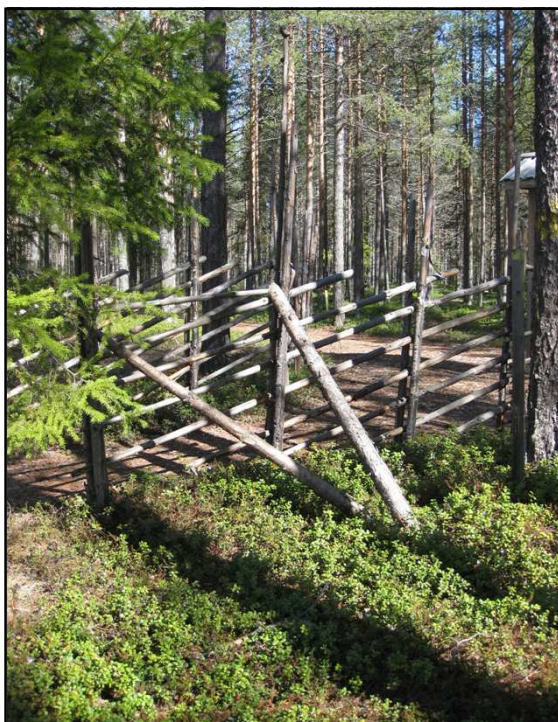
- Metal detecting enthusiast
- Lack of resources to research monuments

Possibilities of ancient monuments

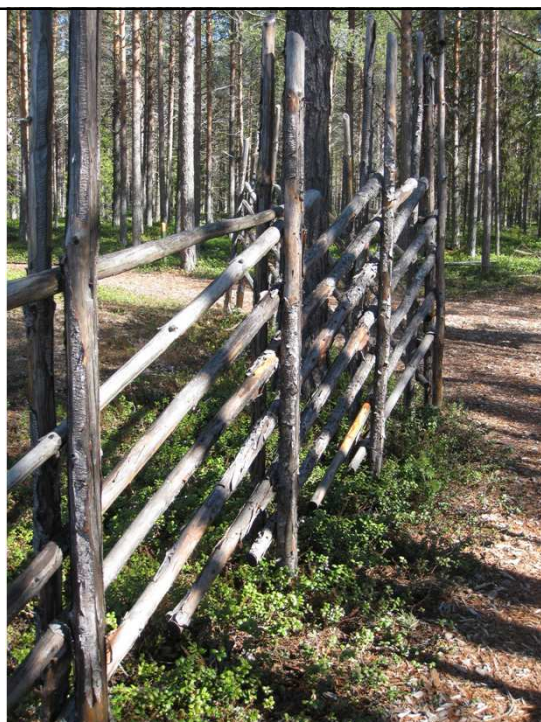
- "Adopt a monument"-project
- Underwater park

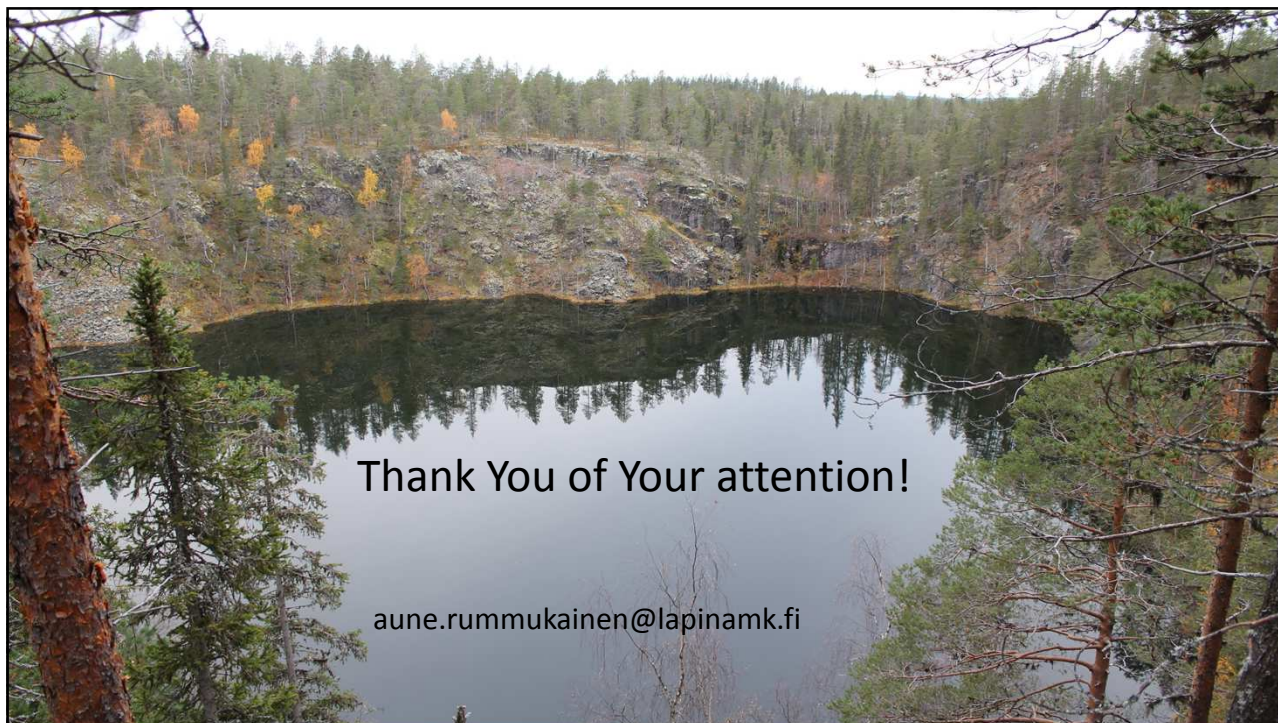


Picture and underwater park map: National Board of Antiquities, Finland



Any questions ?





Thank You of Your attention!

aune.rummukainen@lapinamk.fi