

Presented on behalf of the NZCPA by

**Ian Yule Professor in Precision Agriculture.
Massey University,
Palmerston North, New Zealand**

*Presented at the FIG Working Week 2016,
May 2-6, 2016 in Christchurch, New Zealand*

Precision Agriculture - using Technology to Improve Water Use Efficiency (8256)



FIG Working Week 2016

CHRISTCHURCH, NEW ZEALAND 2-6 MAY 2016

Recovery

from disaster

Organised by



Platinum Partners



Diamond Partner





Precision Agriculture: using Technology to Improve Water Use Efficiency

- A suite of measurement and control technologies based around the ability to spatially locate our actions.
- PA is now at an inflection point where the rules are rapidly changing and this has direct parallels with other industries. We are becoming data driven.
- This change is creating many challenges for us which will be common to the surveying industry. A lot of it revolves around managing end user expectations around data and data visualisation.



FIG Working Week 2016

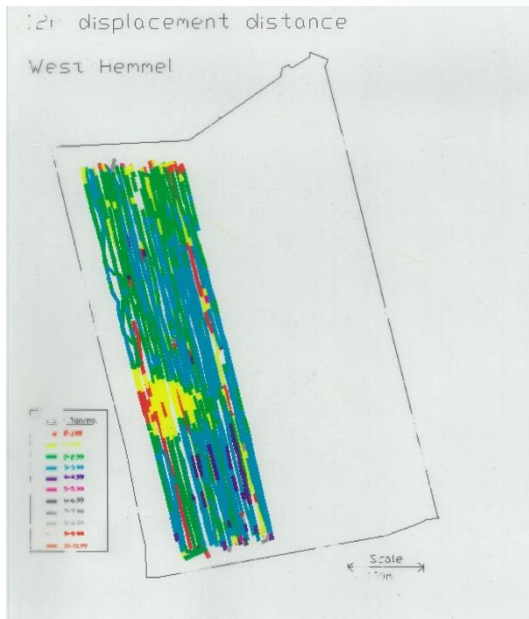
CHRISTCHURCH, NEW ZEALAND 2-6 MAY 2016

Recovery

from disaster

Precision Agriculture: Rapid development and increased sophistication.

First yield map I completed in 1991,
who can remember selective availability ?



Hyperspectral imaging technology
used 25 years later.

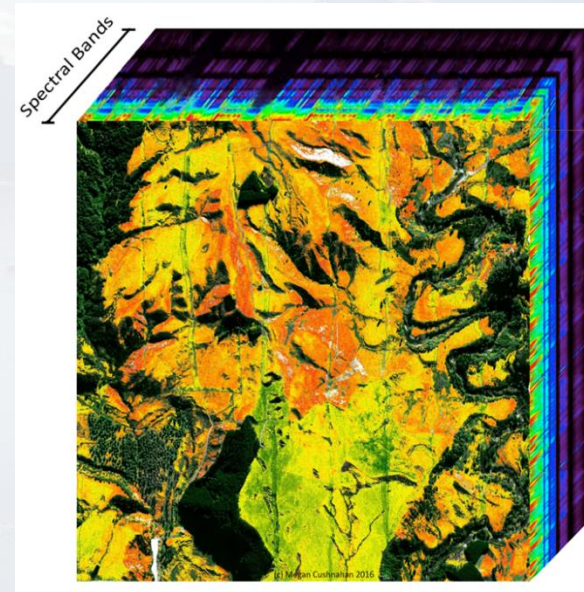




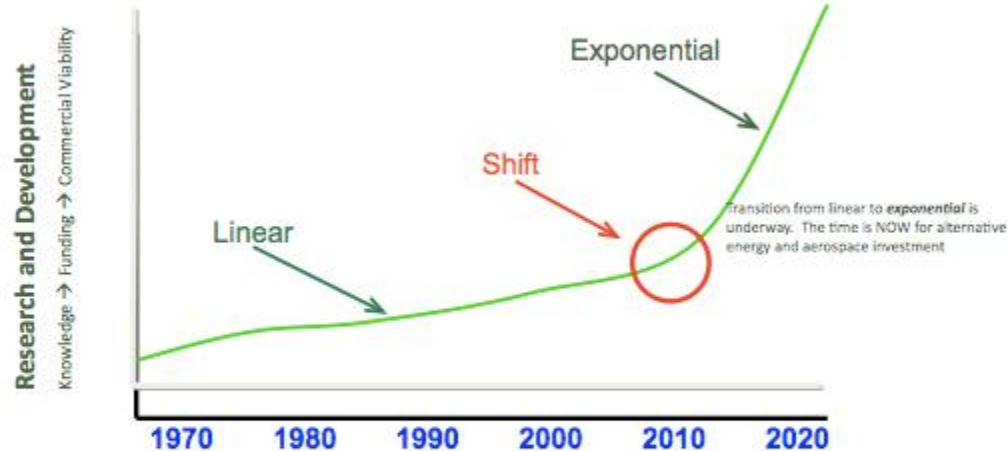
FIG Working Week 2016

CHRISTCHURCH, NEW ZEALAND 2-6 MAY 2016

Recovery

from disaster

Technology Acceleration Curve



Technology Acceleration Curve is no aberration

- ✔ Aviation (WW II)
- ✔ Media/Communications (TV, Cell Ph)
- ✔ Info Tech (PC, Internet)

Exponential Shift requires intersection of:

- ✔ Demand/Political Will
- ✔ Adequate Base of R & D
- ✔ Capital

Terrigriffith.com

Bye Energy  6



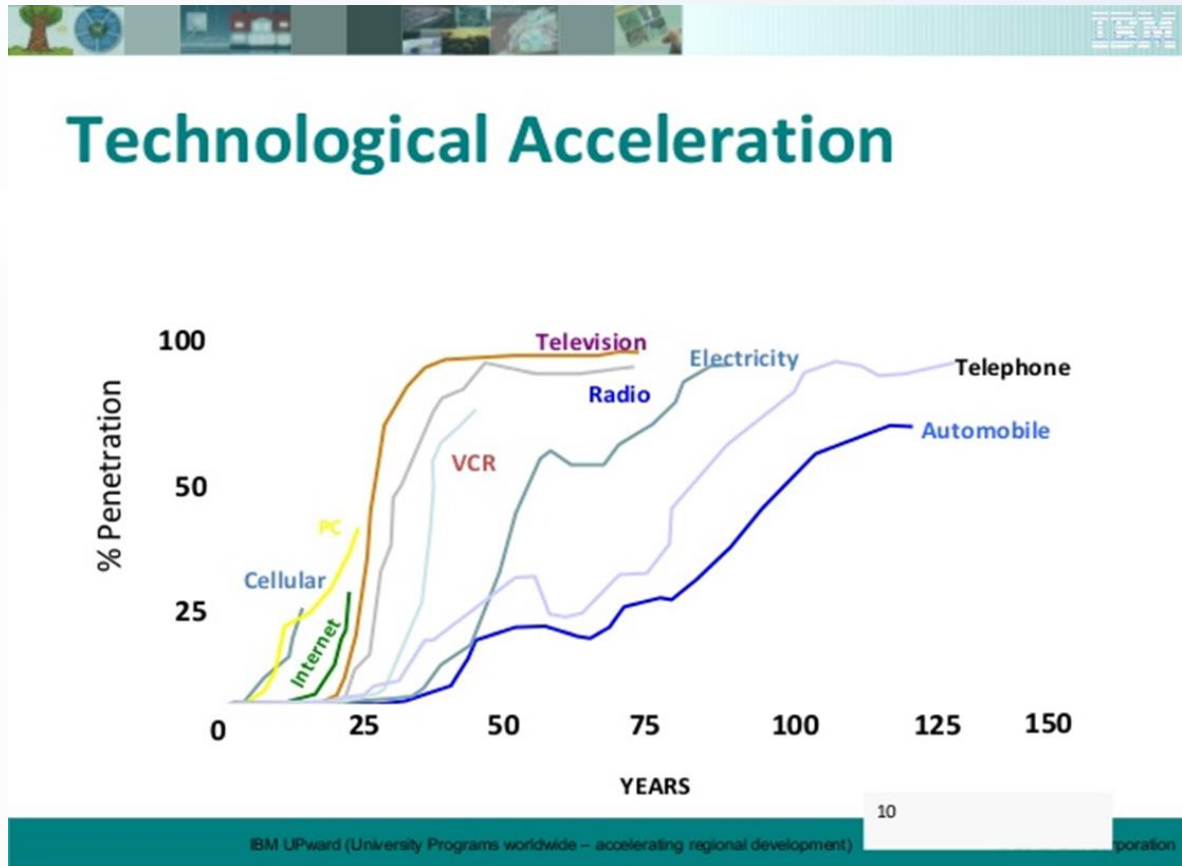
FIG Working Week 2016

CHRISTCHURCH, NEW ZEALAND 2-6 MAY 2016

Recovery

from disaster

Innovation cycle times are being reduced.





PA is at an inflection point.

- PA developed through spatial technologies, ability to locate and sense, then use that information to better control or inform operational management. Improved strategic management.
- That is what I would Term GEN 1.
- PA is now about data, and this is what I would term GEN 2.
- Multiple scale, multiple time, multiple source data, the internet of things etc.
- The speed and scale of the change seems to be escaping most people, we are not well equipped to deal with it.



Innovation Cycle: Rapid development. UAVs

Dramatically shortening: UAV's as an example of very rapid technical innovation.

- Got going 5 years ago, Craft have changed, usability has improved very rapidly, improving access.
- Commercial services now available for most industries. Kiwi fruit, forestry, viticulture, agriculture.
- Research organisations, maybe a couple up to play until recently but generally failing to keep up.
- Research organisations have had very little impact in the development of UAV services for NZ.

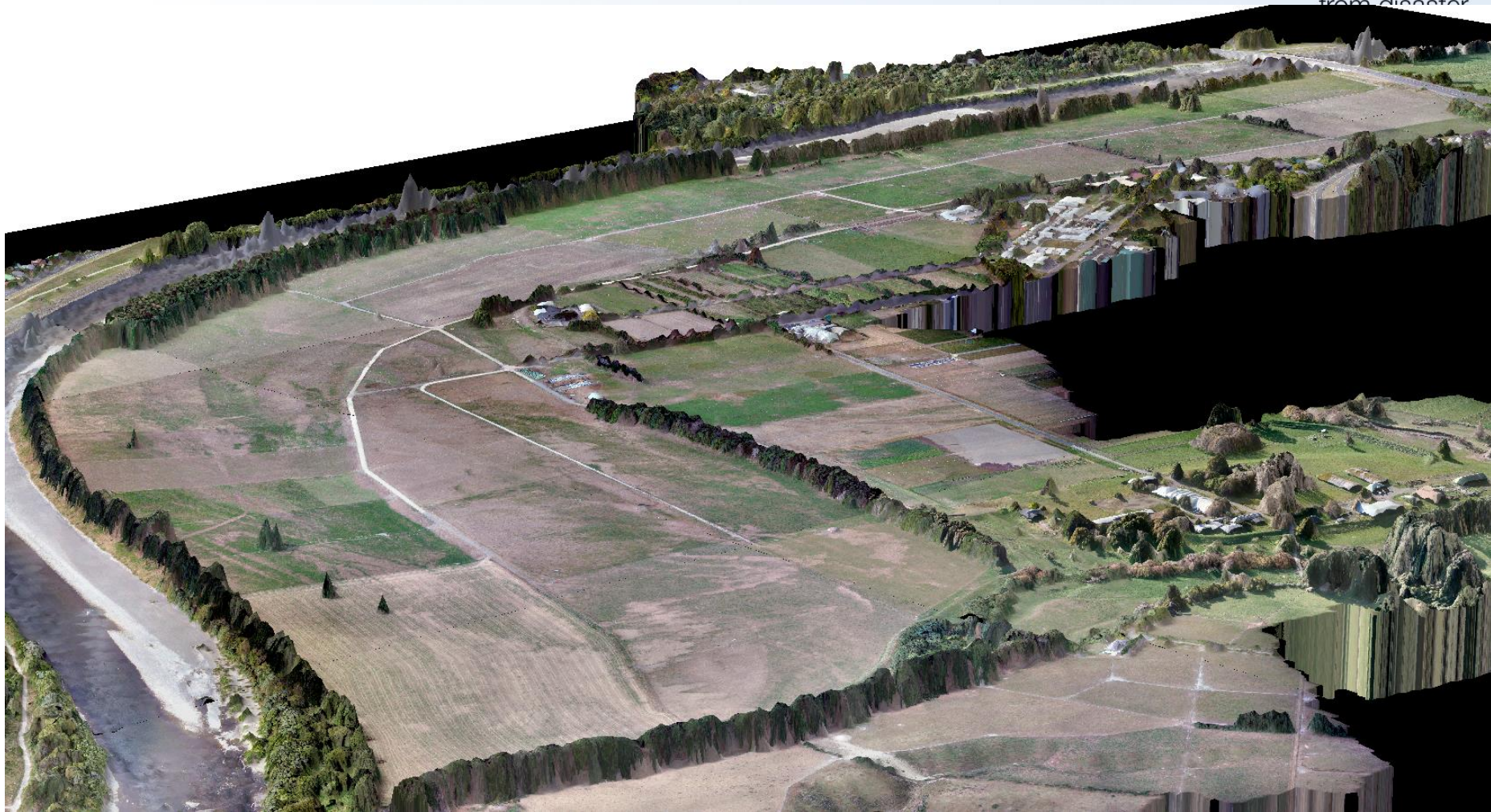


FIG Working Week 2016

CHRISTCHURCH, NEW ZEALAND 2-6 MAY 2016

Recovery

from disaster



Platinum Partners:



Diamond Partner





FIG Working Week 2016

CHRISTCHURCH, NEW ZEALAND 2-6 MAY 2016

Recovery

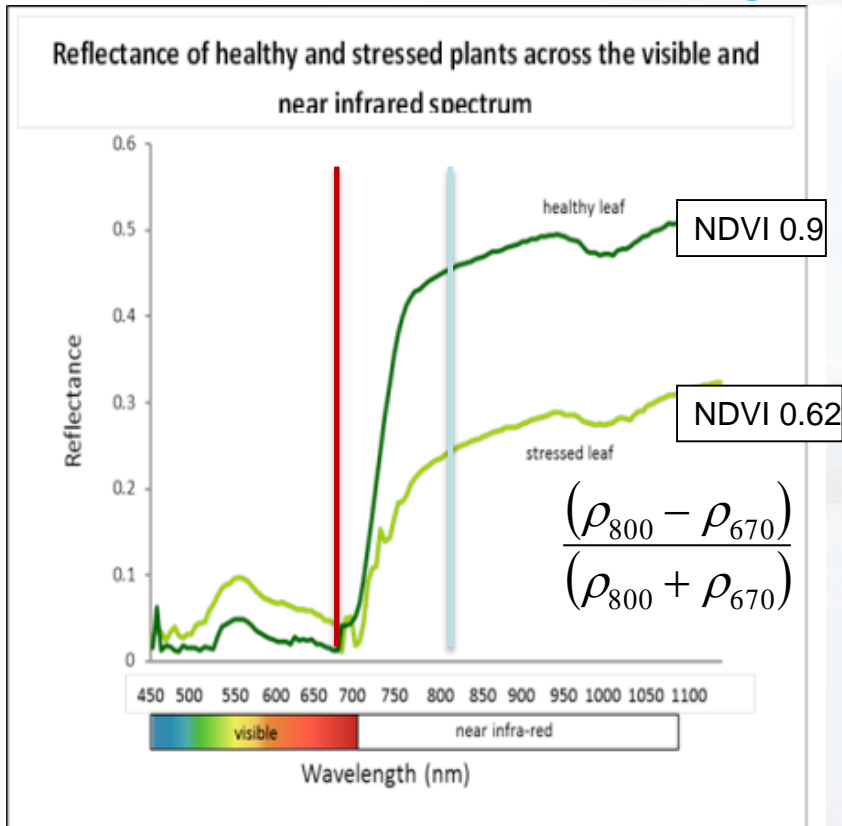
from disaster

Applications of UAV Sensors Trimble UX5 System





Multispectral Sensing



A “typical” vegetation spectral signature changes with a number of biochemical and biophysical plant properties...

Biophysical properties such as growth stage, disease, plant density

Biochemical properties such as leaf nutrient concentrations

Atmospheric water, light angle and light intensity are a few of the factors that can vary the reflectance of a scene without any change from the target





FIG Working Week 2016

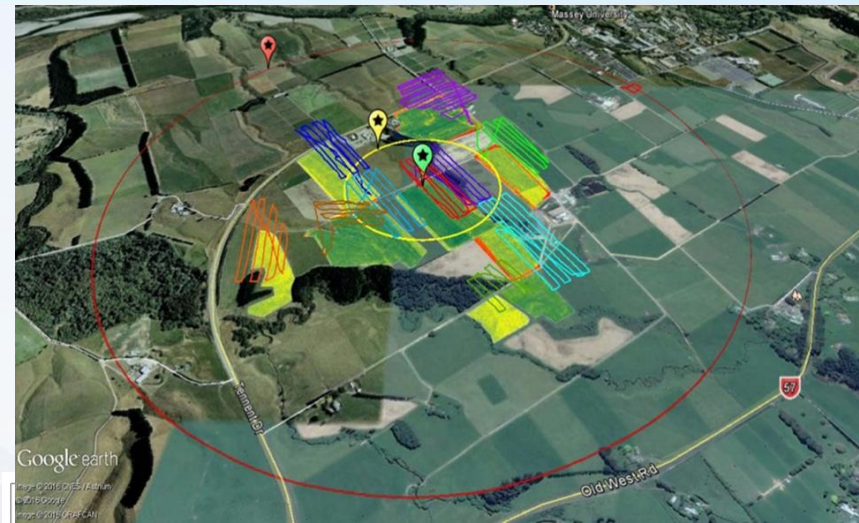
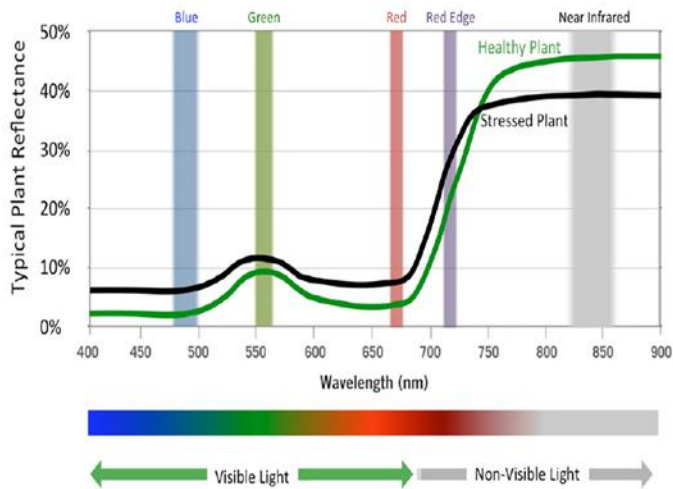
CHRISTCHURCH, NEW ZEALAND 2-6 MAY 2016

Recovery



Spectral bands

High-grade optical filters deliver precise information specially targeted to agricultural applications.



Platinum Partners:



Diamond Partner





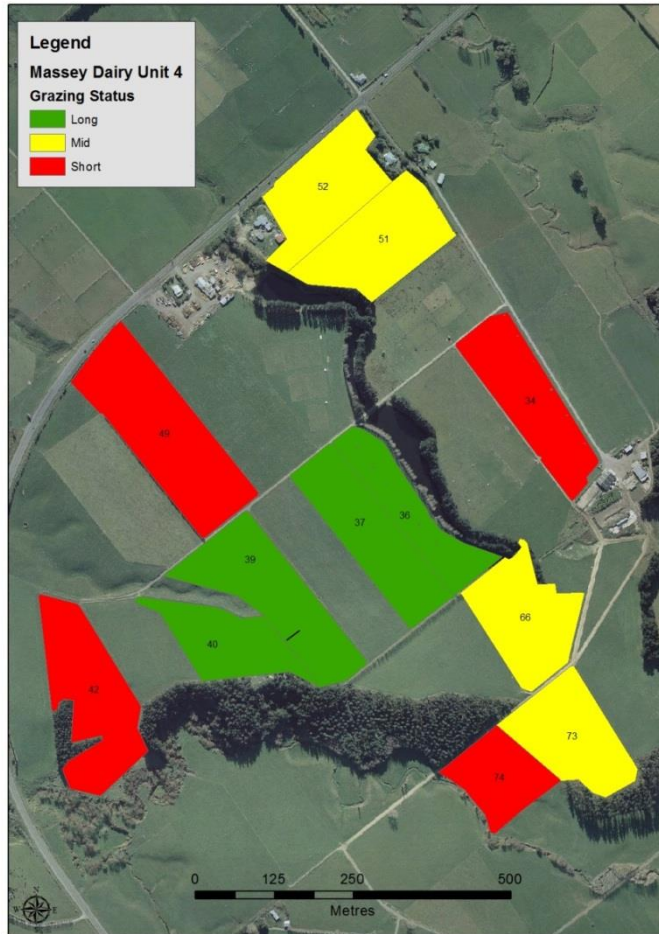
FIG Working Week 2016

CHRISTCHURCH, NEW ZEALAND 2-6 MAY 2016

Recovery

from disaster

Massey Dairy 4



Massey Dairy 4





Hyperspectral Data

- Hyperspectral sensing and imaging has a long
 - and proven track record in many fields.
- This is no longer an experimental technology we are
 - bringing it out of the laboratory to the real world.
- We had to progress from sensing to imaging.
- It is difficult to see the limits of where this can be applied.
- **Further Applications:** effective farming area, weed and disease management, horticulture, forestry (various applications), grazing management, animal health. Environmental management, identifying sustainable land management practices, nutrient attenuation. Crop and pasture, species - cultivar identification, plant health and moisture management, yield estimation, insurance loss adjustment. Erosion monitoring, land capability classification, hydrological modelling, etc etc.

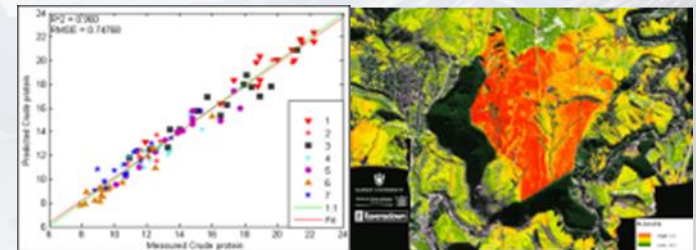


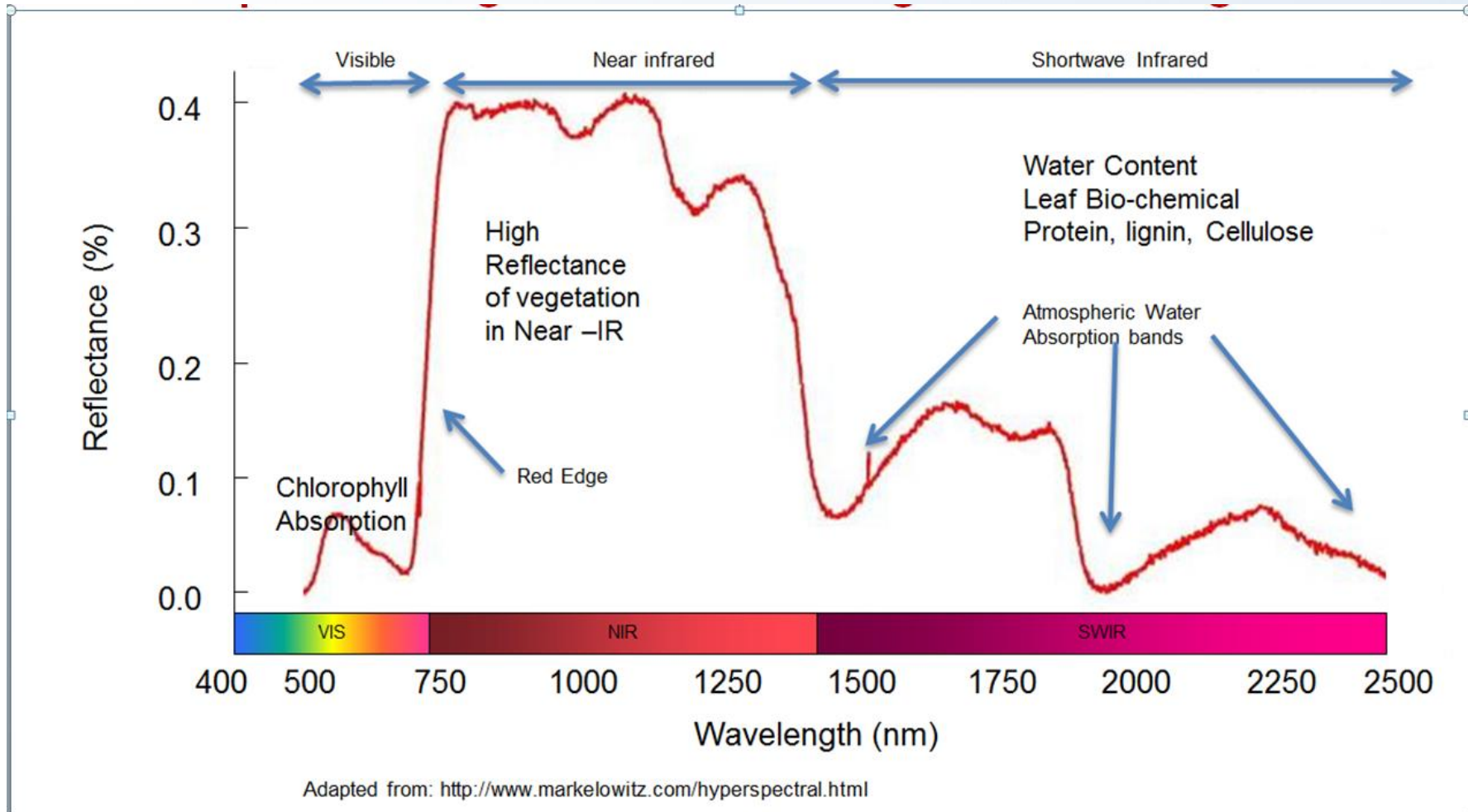


FIG Working Week 2016

CHRISTCHURCH, NEW ZEALAND 2-6 MAY 2016

Recovery

from disaster





Push-broom hyperspectral imaging

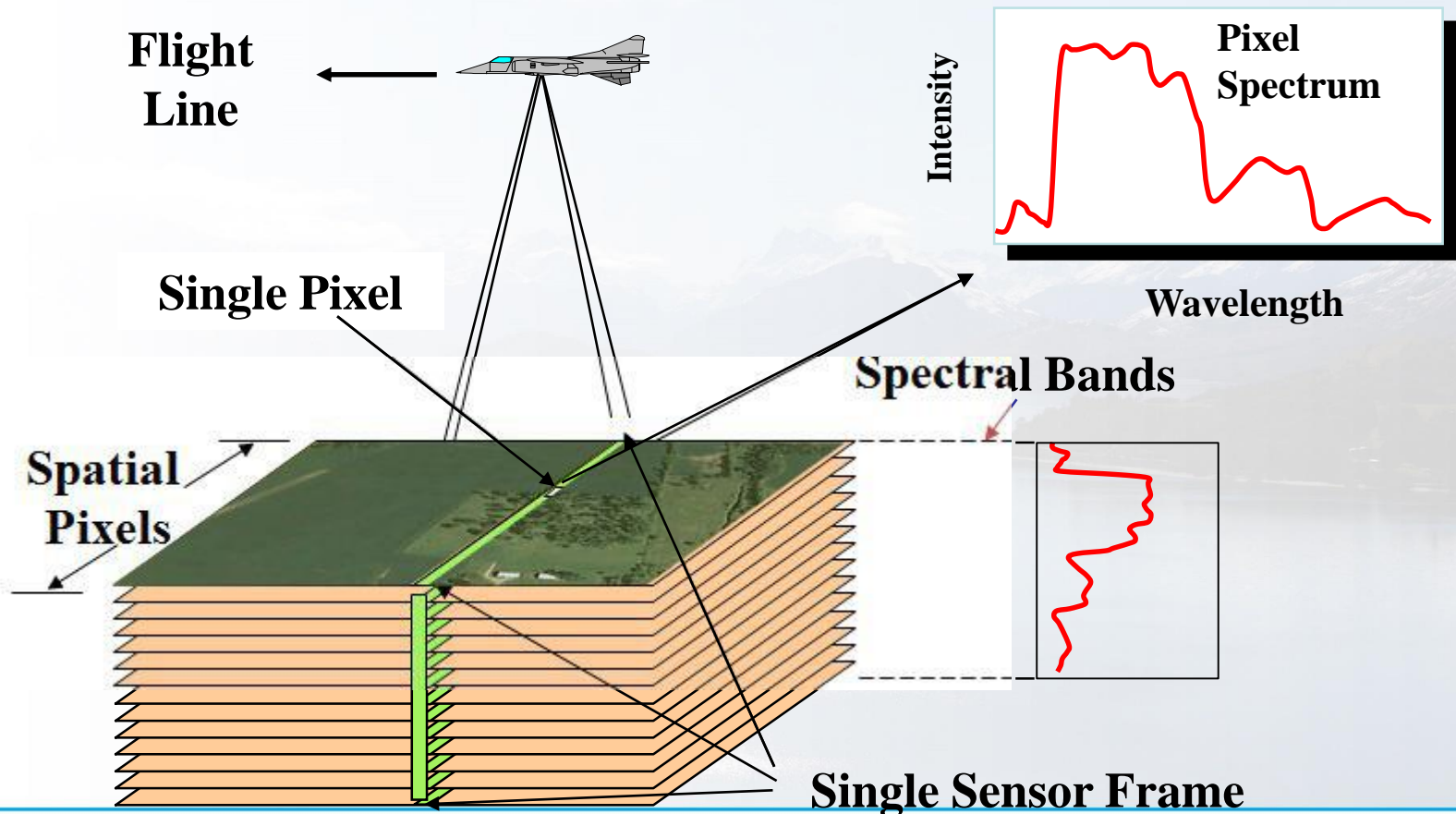


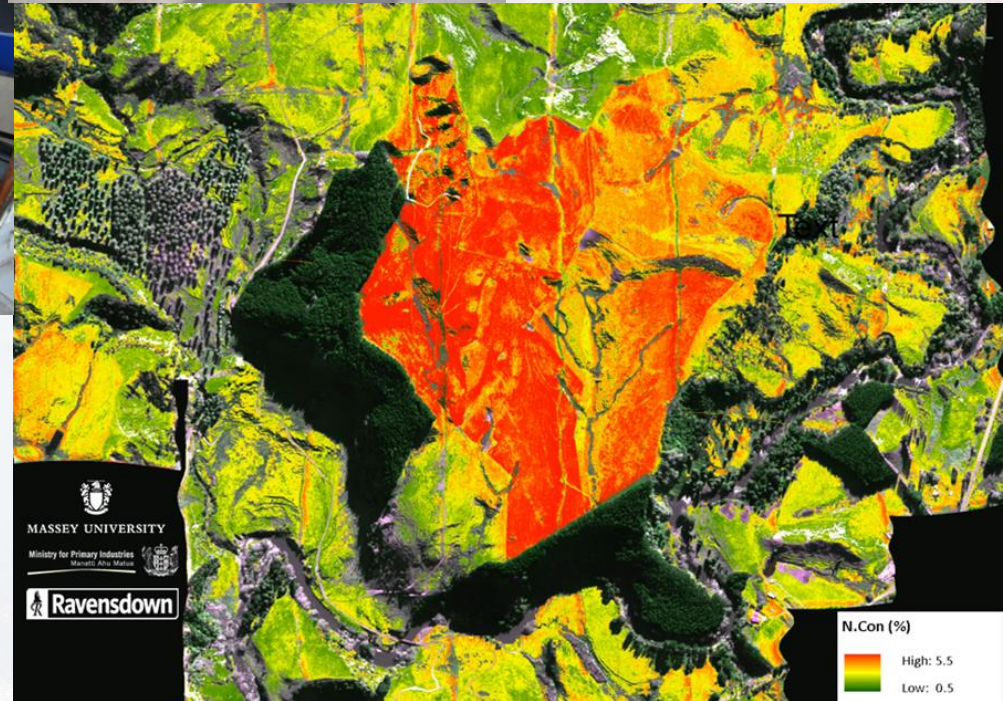
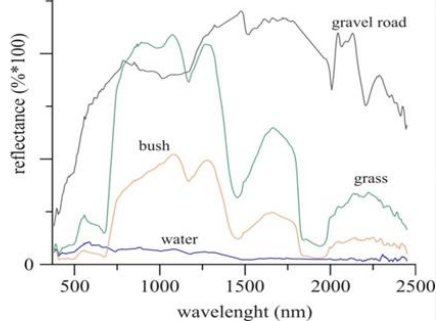


FIG Working Week 2016

CHRISTCHURCH, NEW ZEALAND 2-6 MAY 2016

Recovery

Hyperspectral Imaging: Fenix Airborne Sensor



Platinum Partners:



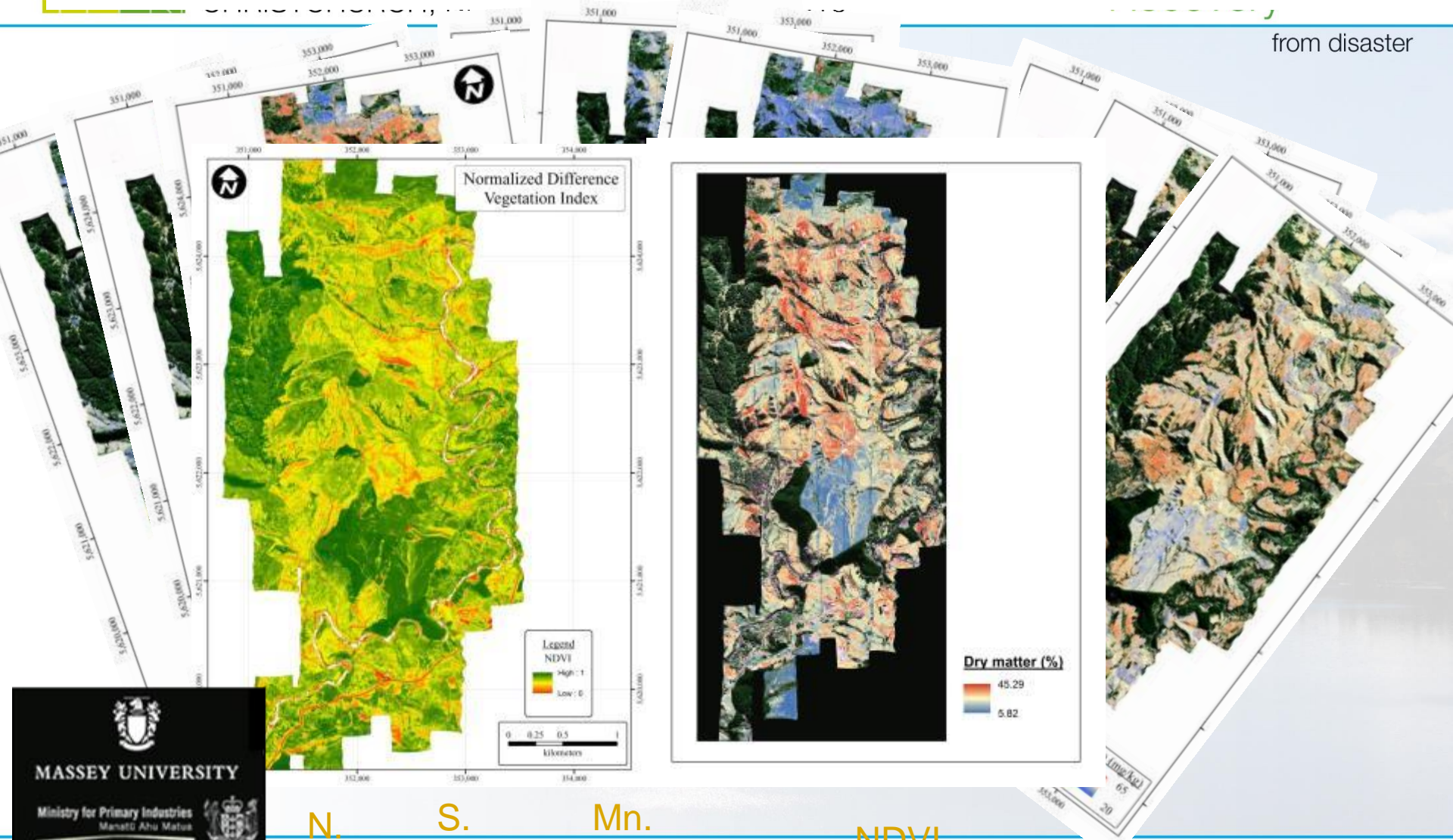
Diamond Partner



FIG Working Week 2016

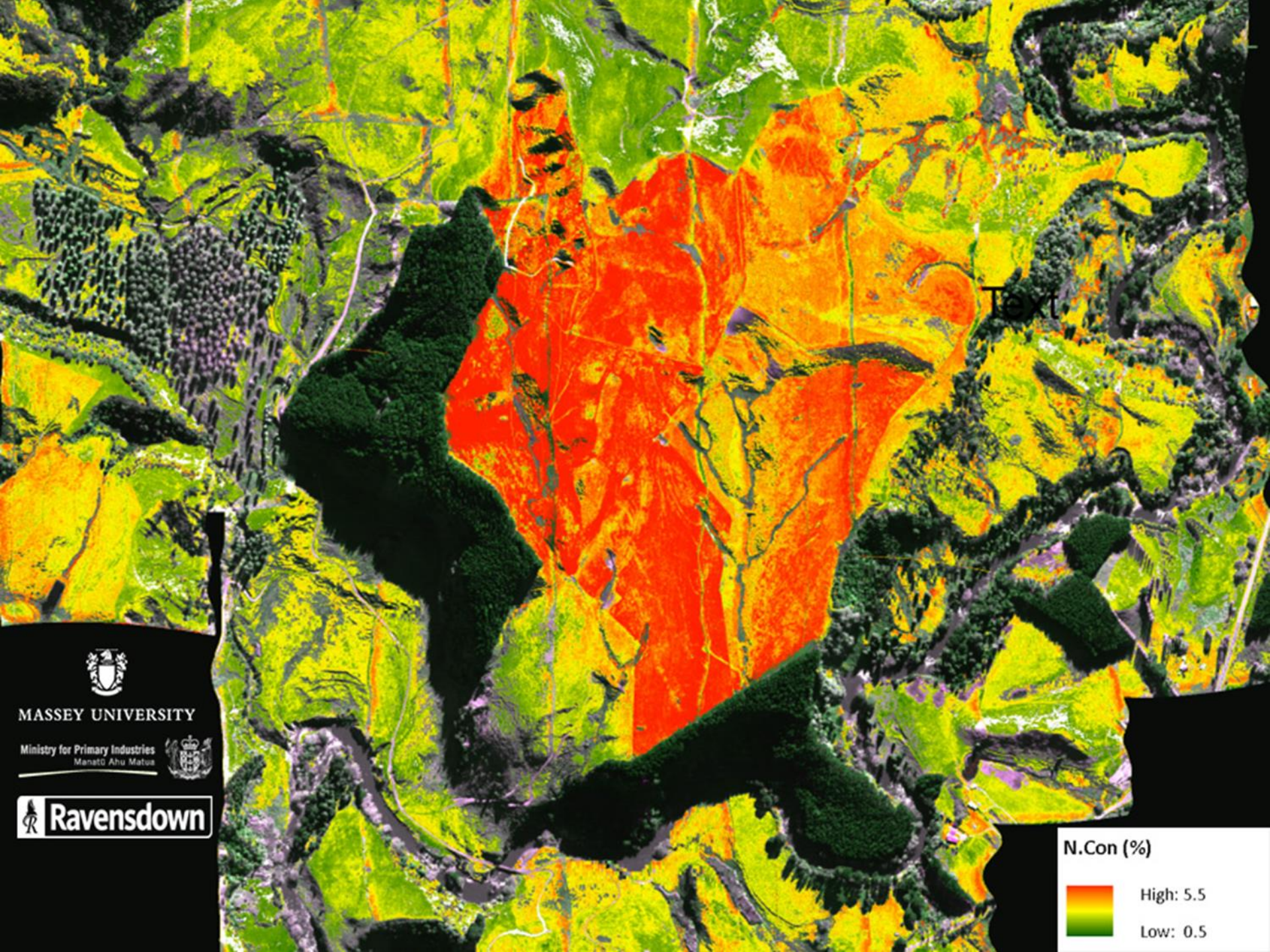
We can now describe our environment in a lot of detail

from disaster



N. P. S. Cu. Mn. NDVI
K. Mg. Na. Zn.





MASSEY UNIVERSITY

Ministry for Primary Industries
Manatū Ahu Matua



 **Ravensdown**

N.Con (%)



High: 5.5

Low: 0.5



FIG Working Week 2016

CHRISTCHURCH, NEW ZEALAND 2-6 MAY 2016

Recovery

from disaster

RGB Visualisation of farm

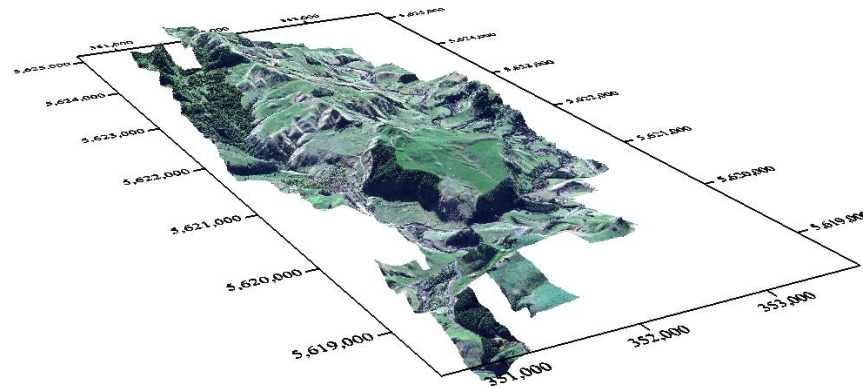




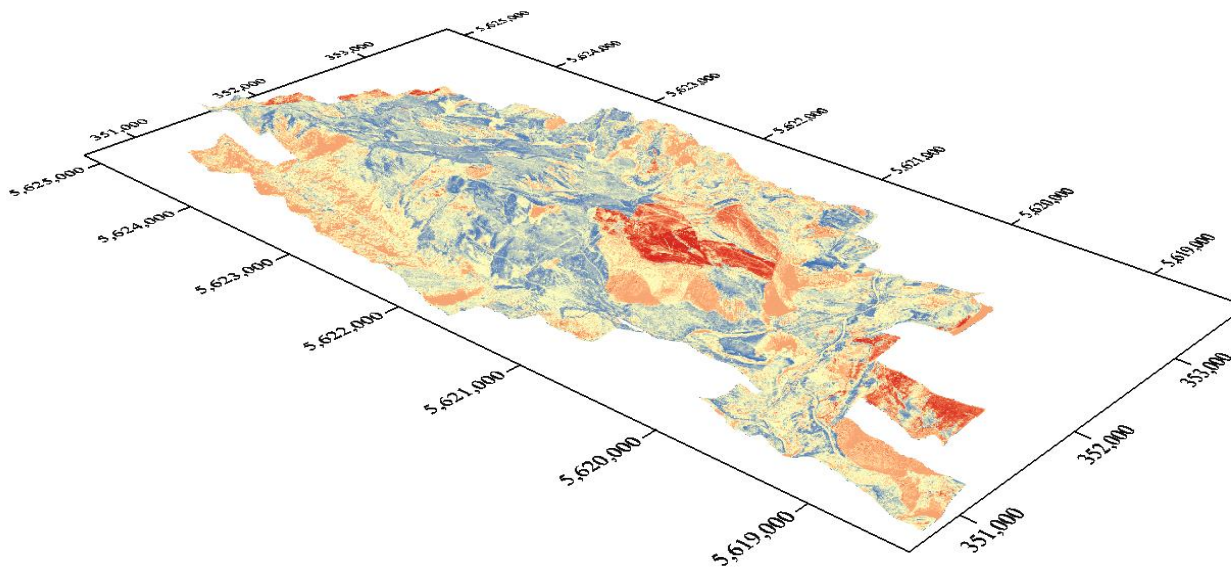
FIG Working Week 2016

CHRISTCHURCH, NEW ZEALAND 2-6 MAY 2016

Recovery

from disaster

Nitrogen concentration in pasture

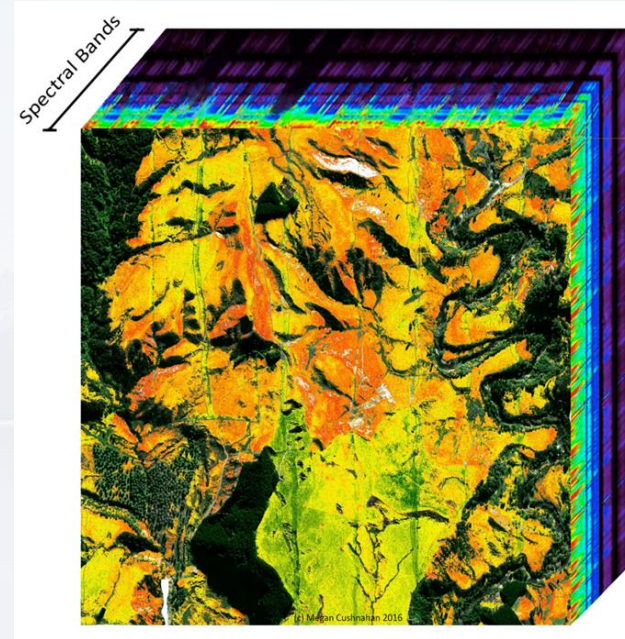




The new data economy



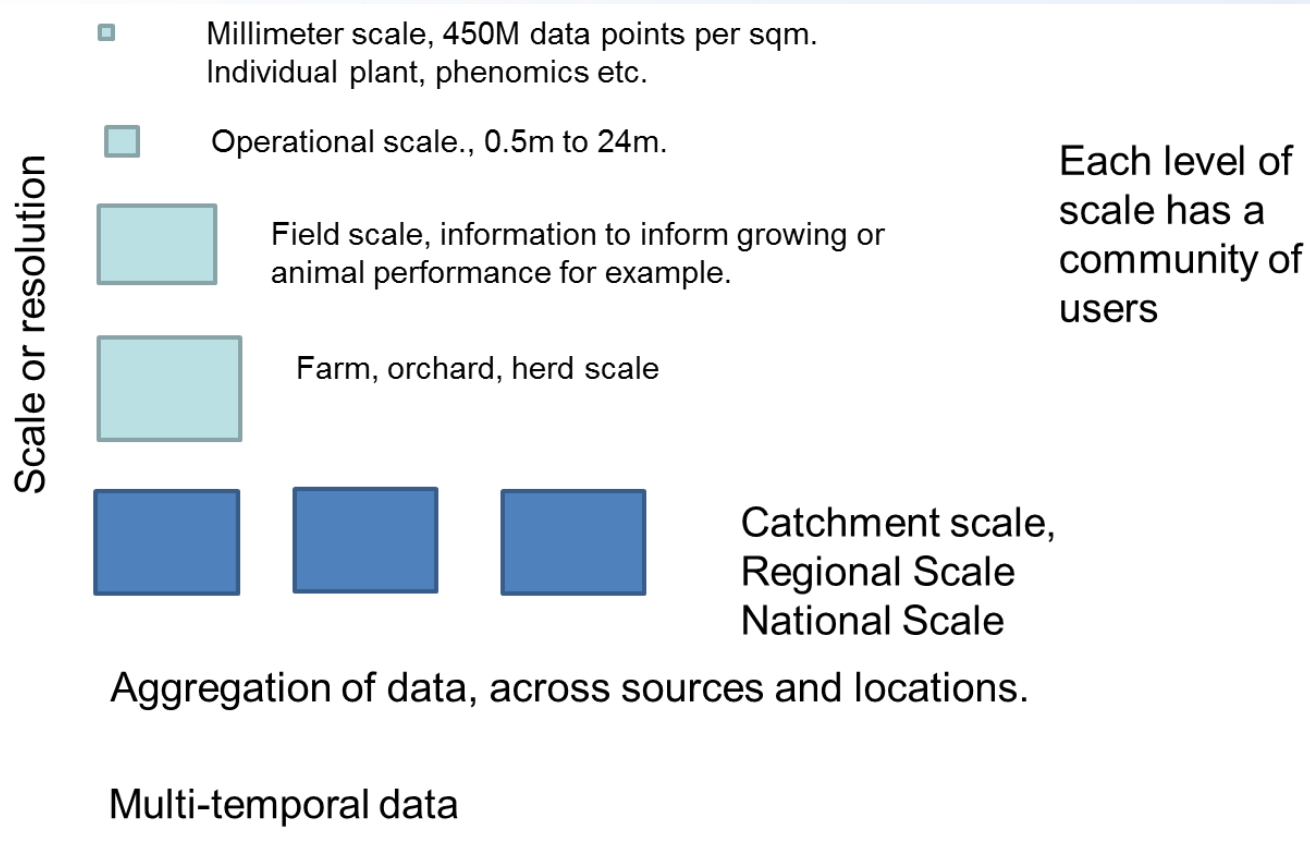
3 transects samples per 3,000ha
(and then interpolate observations
in terms of previous rules, how
robust?)



4,500,000 data points per ha. (4.5M)
13,500,000,000 data points per 3000 ha
farm.



Speed and Scale of Change





Data Fear

- A lot of negative terms being applied to data:
- Data lakes,
 - Fear of drowning
- Data Graveyard,
 - Fear of death,
- Data redundancy,
 - Used to old model where data was expensive.

Big Data: Wrong term, does not convey the level and scale of change.

Digital

Agriculture, Horticulture, Forestry, Viticulture



FIG Working Week 2016

CHRISTCHURCH, NEW ZEALAND 2-6 MAY 2016

Recovery

from disaster



Platinum Partners:



Diamond Partner





FIG Working Week 2016

CHRISTCHURCH, NEW ZEALAND 2-6 MAY 2016

Recovery

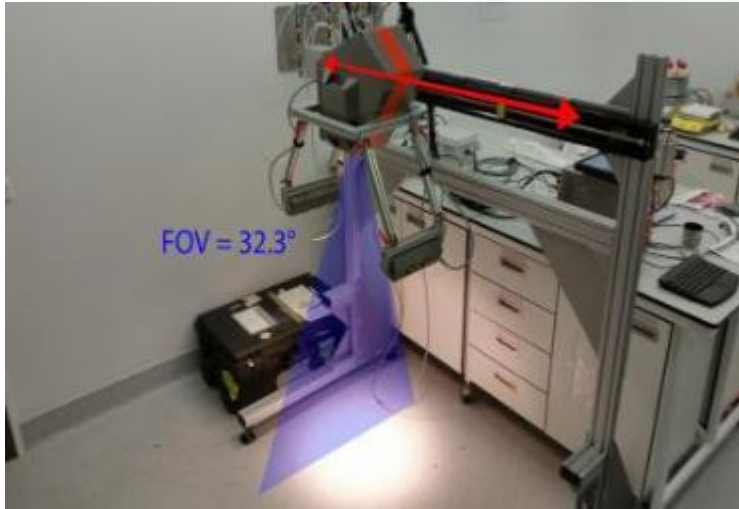


Platinum Partners:



Diamond Partner





Rotary stage, allows the Fenix to rotate and take an image of a vista.

Closer view than aerial, flexibility, possible to mount on a mobile robot actuator for example.

This opens up all sorts of inspection opportunities for biosecurity purposes for example.

Ground based imaging

The same Fenix imaging system can be used close up to scan an object producing a detailed hyperspectral image of that object. Spatial resolution just over 1 mm. 1 Million points per m²

High speed imaging, takes two minutes to complete a scan.





FIG Working Week 2016

CHRISTCHURCH, NEW ZEALAND 2-6 MAY 2016

Recovery

The screenshot displays the ENVI software interface. The main window shows a satellite image of a road scene with several vehicles. A 'Spectral Profile' window is open, showing a line graph of 'Data Value' (0 to 4000) versus 'Unknown' (500 to 2000). The graph contains several colored lines representing different features. A legend in the 'Spectral Profile' window identifies the following features:

- bush vegetation (red)
- white lite (green)
- bare soil (blue)
- road (tar) (cyan)

The 'road (tar)' feature is selected in the legend. The 'Spectral Profile' window also includes a 'General' tab with the following settings:

- Name: road (tar)
- Color: (0.255,255)
- Line Style: (empty)
- Thickness: 1
- Symbol: No symbol

The 'Toolbox' on the right side of the interface lists various processing tools, including 'Anomaly Detection', 'Band Algebra', 'Classification', 'Geometric Correction', 'Image Registration Workflow', 'Image Sharpening', 'LUDAR', 'Mosaicking', 'Radar', 'Radiometric Correction', 'Raster Management', 'Regions of Interest', 'SPEAR', 'Spectral', 'Statistics', 'Target Detection', 'THOR', 'Terrain', 'Transform', 'Vector', and 'Extensions'. The 'fenixdist correction' tool is highlighted at the bottom of the list.



Platinum Partners:



Diamond Partner





Conclusions

- Managing water is an important element in our precision agriculture.
- Sensing and imaging are making huge strides in terms of describing our environment.
- Data is growing at an exponential rate.
- How do you turn data into information.
- Visualisation of data is an extremely important element.
- Even hyperspectral imaging is becoming more accessible and can be used from multiple platforms.