



# GLTN

GLOBAL LAND TOOL NETWORK

*SECURING LAND AND PROPERTY RIGHTS FOR ALL*

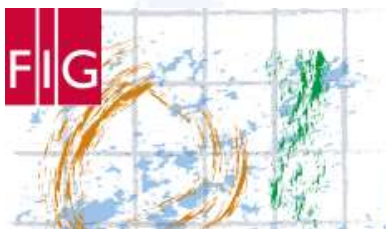
# Social Tenure Domain Model

## Technical Development

**JOHN GITAU**

31<sup>ST</sup> MAY 2017

**HELSINKI, FINLAND**



## FIG WORKING WEEK 2017

Surveying the world of tomorrow –  
From digitalisation to augmented reality

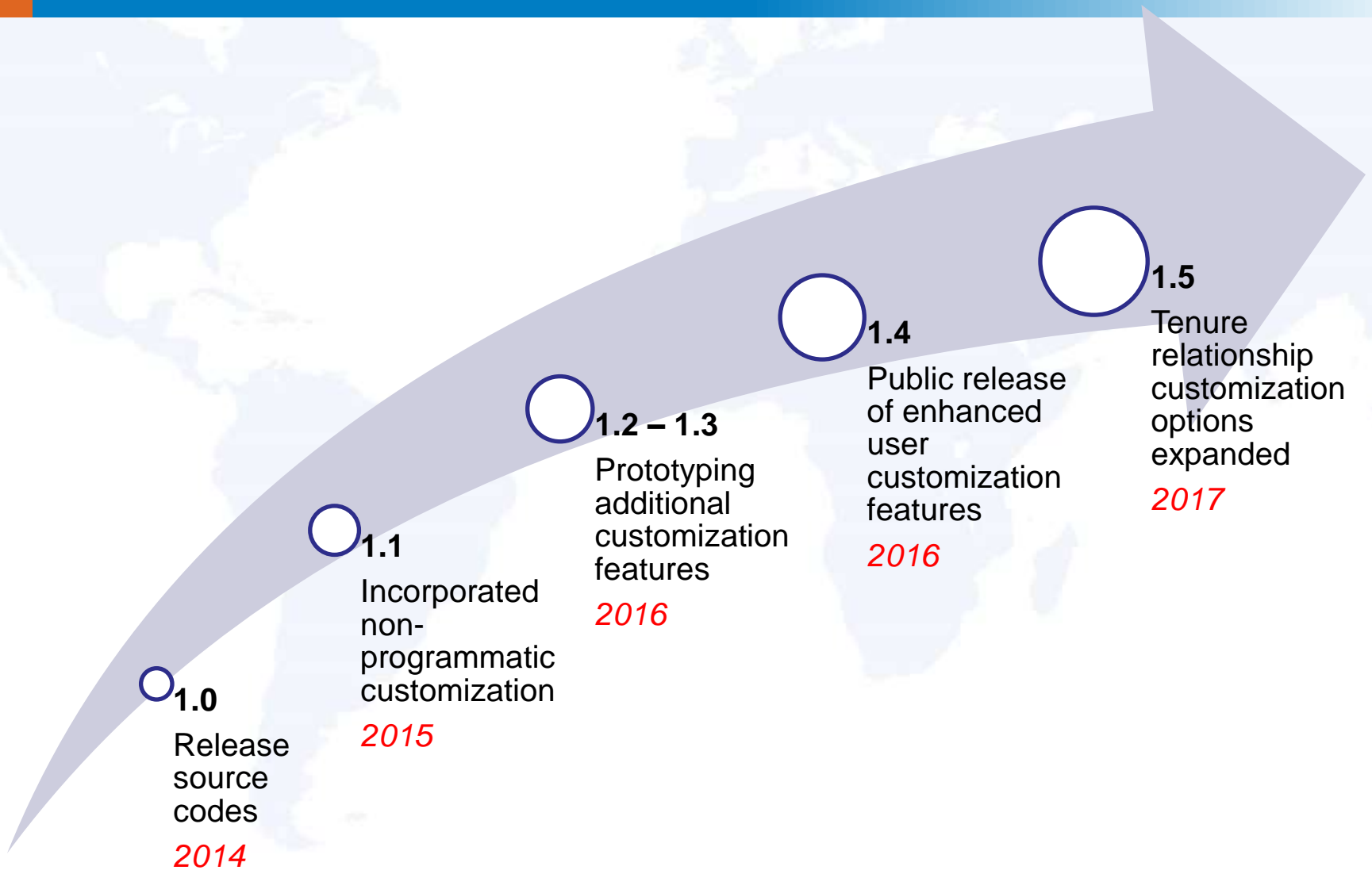
May 29 - June 2 **Helsinki Finland**



FACILITATED BY:

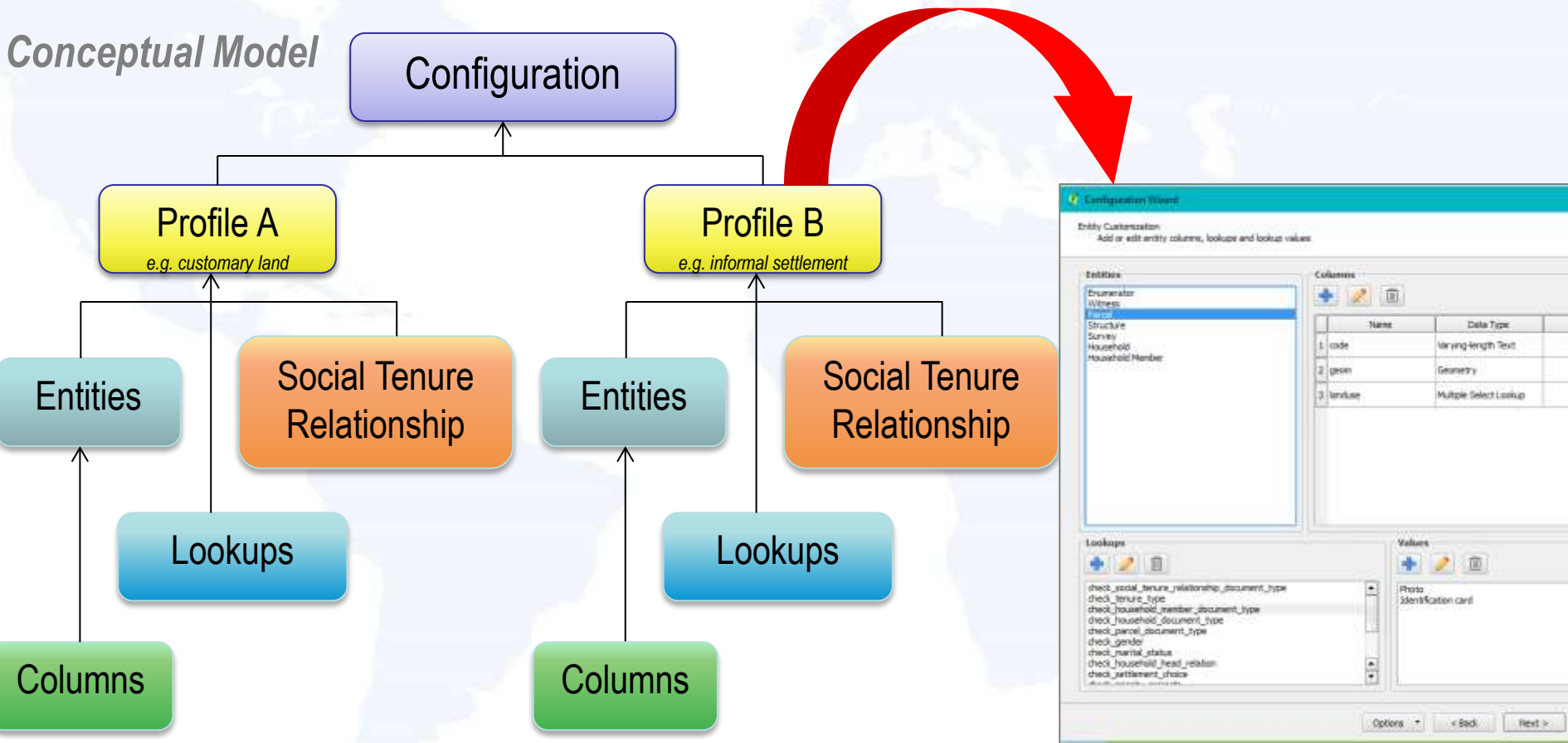
**UN HABITAT**  
FOR A BETTER URBAN FUTURE

# VERSION RELEASES



# CUSTOMIZATION OPTIONS

Conceptual Model



- Non-programmatic creation of tables and corresponding attribution
- Framework for designing report templates and performing statistical analysis

# STDM CODE SPRINT

*Partners - OSGeo, Kartoza, RCMRD, Metaspacial*

- Software translated to 3 languages – French, Portuguese and German
- Developed proof-of-concept for GeoPackage data format
- Prototyped integration of desktop with GeoODK
- Extensively reviewed end-user manual



FACILITATED BY:

**UN HABITAT**  
FOR A BETTER URBAN FUTURE

 **GLTN**  
GLOBAL LAND TOOL NETWORK

# 2017 ROADMAP

Release	Highlight
1.6 (June)	Tool translation in 4 languages (French, Portuguese, German and Arabic)
1.7 (August)	Integration with GeoODK
2.0 (October)	Enterprise features

FACILITATED BY:

**UN HABITAT**  
FOR A BETTER URBAN FUTURE

