

Presented at the FIG Congress 2022,  
11-15 September 2022 in Warsaw, Poland

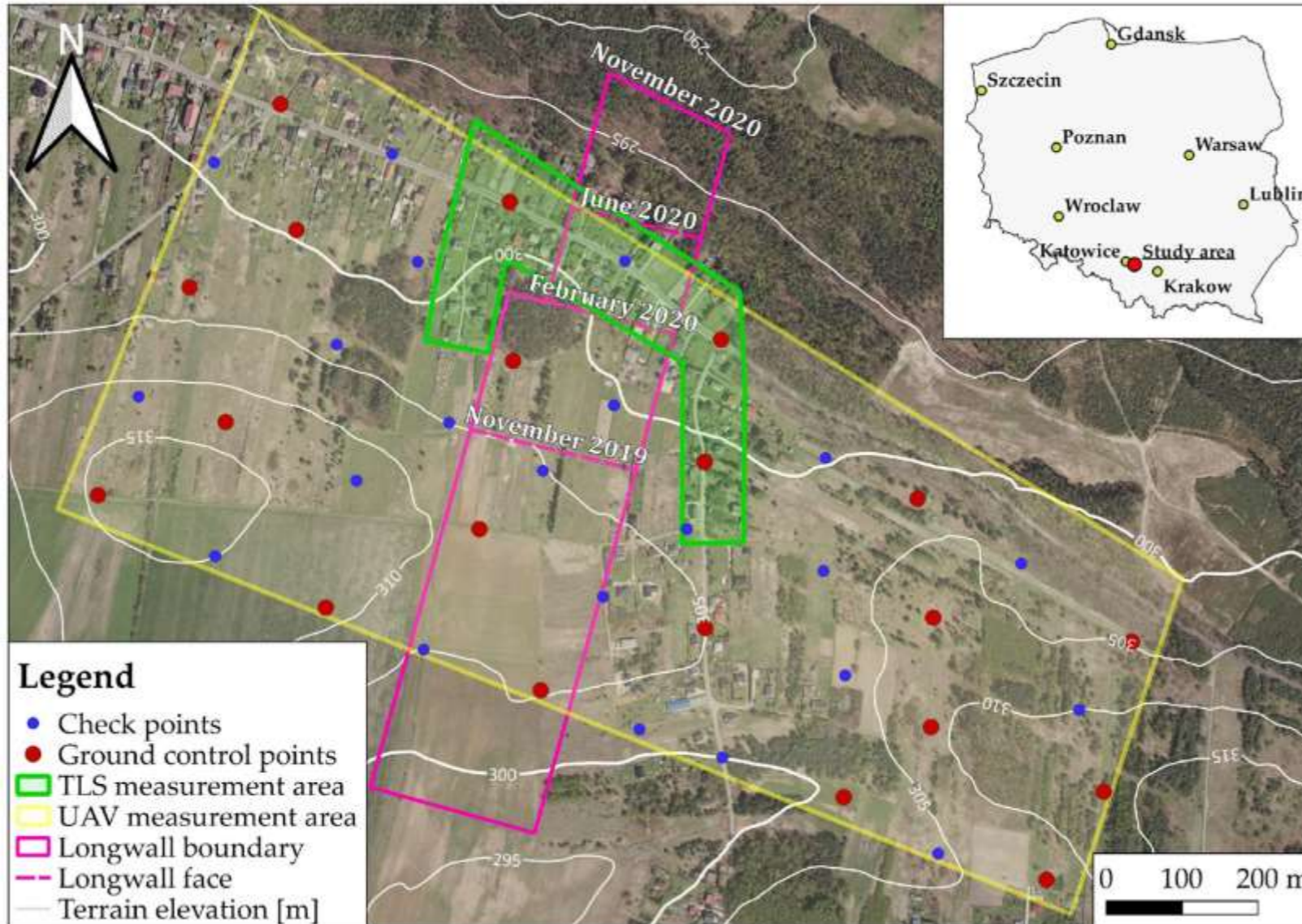


AKADEMIA GÓRNICZO-HUTNICZA  
IM. STANISŁAWA STASZICA W KRAKOWIE  
AGH UNIVERSITY OF SCIENCE  
AND TECHNOLOGY

# Determination of Buildings Tilts on the Basis of UAV Photogrammetric Data

Katarzyna Strzabała, Paweł Ćwiąkała, Edyta Puniach, Wojciech Gruszczyński,  
Wojciech Matwij

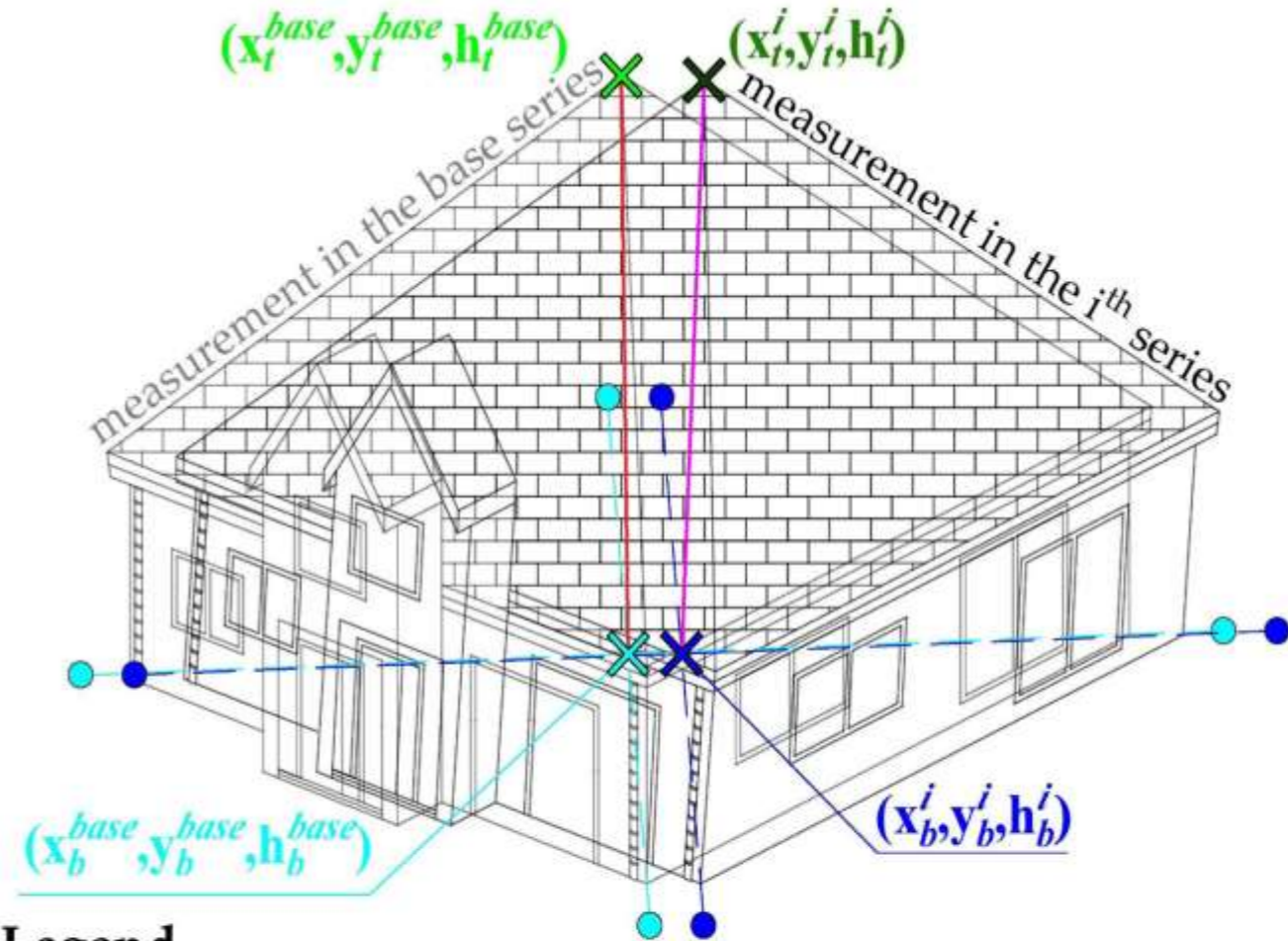
# Study area



- Five measurement series:
- 1) 2019 July (base series);
  - 2) 2019 November;
  - 3) 2020 February;
  - 4) 2020 June;
  - 5) 2020 November.

# Methodology for determining changes in building

- HzDiff method uses:
  - top point
  - bottom point
  - height of building
- VDiff method uses:
  - corner points

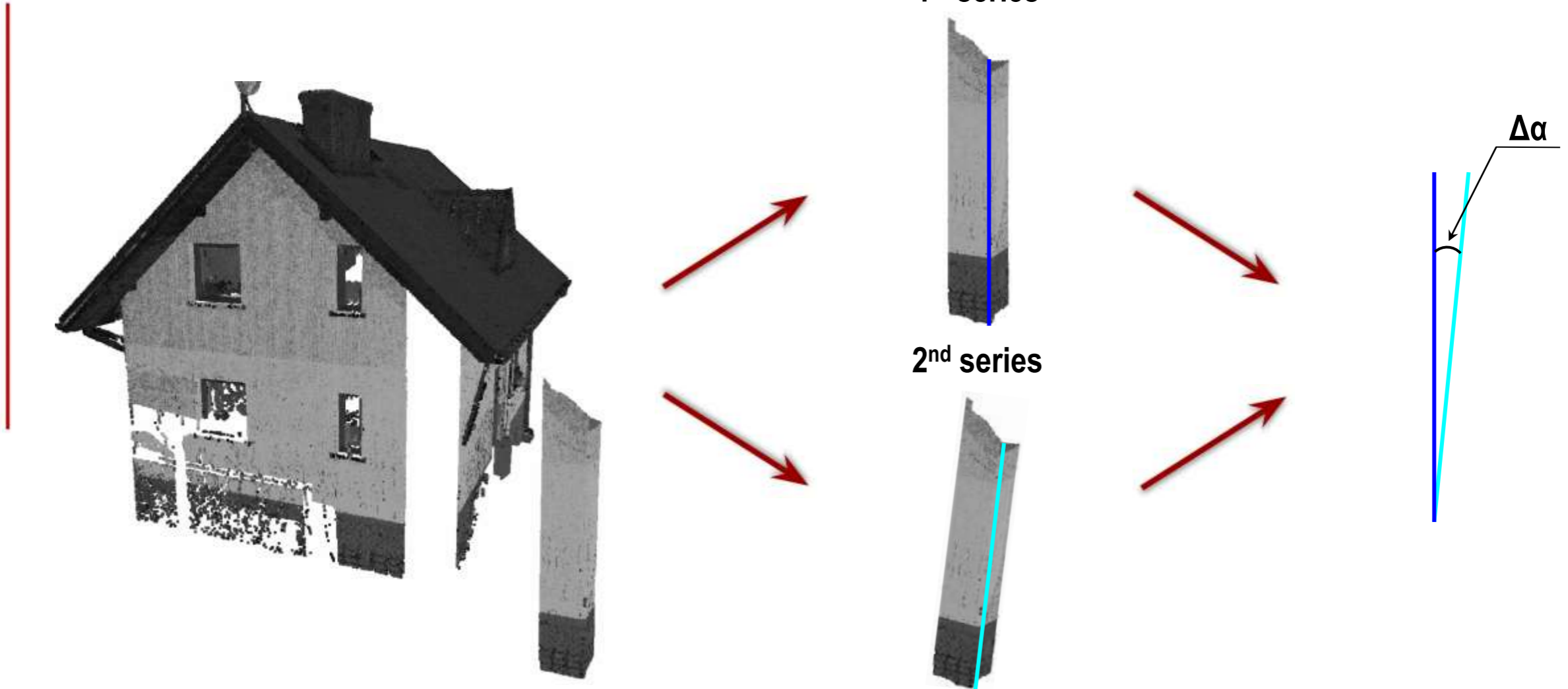


## Legend

- XX Bottom points
- XX Top points
- ● Corner points



# Reference data (TLS)



# Results – accuracy analysis

## HzDiff method

$RMSE_X = 1.7 \text{ mm/m}$

$RMSE_Y = 2.1 \text{ mm/m}$

$RMSE_{XY} = 2.7 \text{ mm/m}$

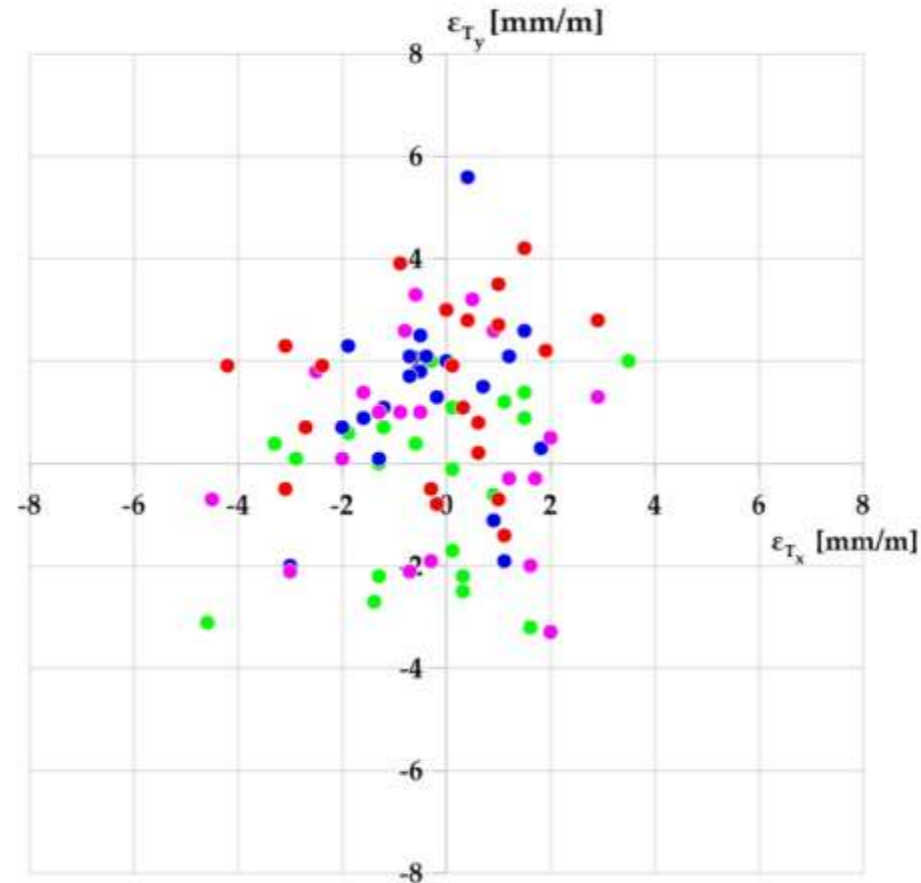
## VDiff method

$RMSE_X = 2.4 \text{ mm/m}$

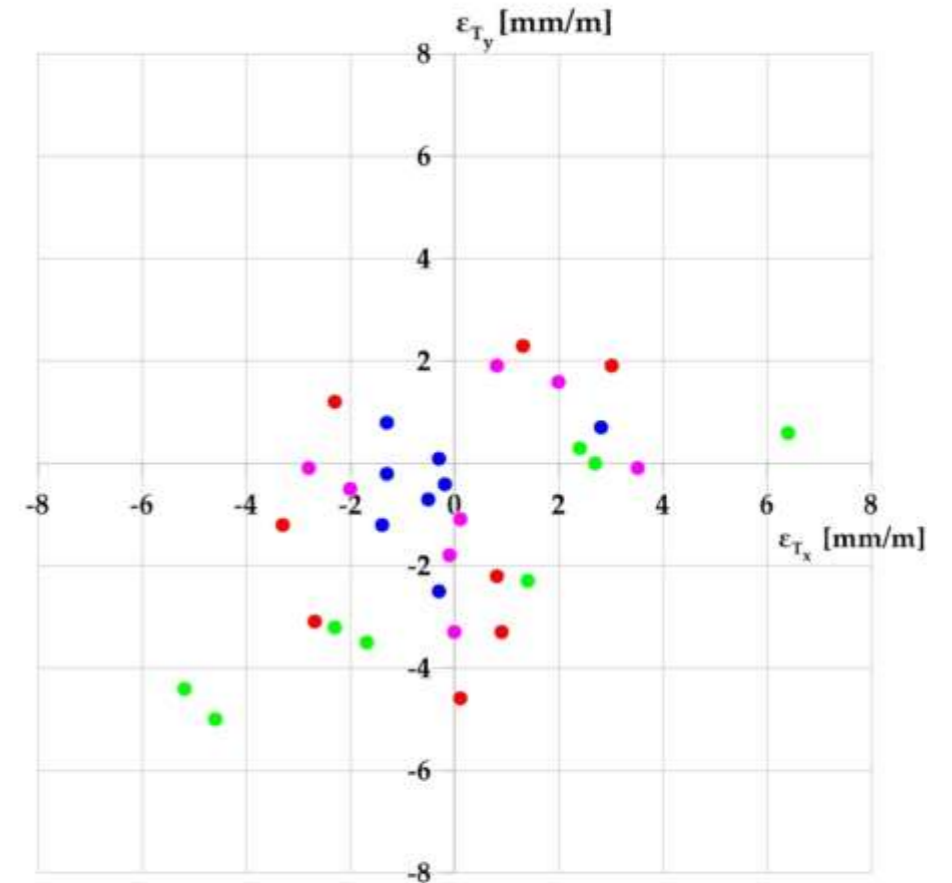
$RMSE_Y = 2.3 \text{ mm/m}$

$RMSE_{XY} = 3.3 \text{ mm/m}$

TLS-HzDiff method



TLS-VDiff method



**Legend**

- 
- July 2019-November 2019
- 
- July 2019-February 2020
- 
- July 2019-June 2020
- 
- July 2019-November 2020

# Determining changes in building tilts based on UAV photogrammetry

**Strząbała Katarzyna, Ćwiąkała Paweł, Gruszczyński Wojciech, Puniach Edyta,  
Matwój Wojciech**

*Measurement*

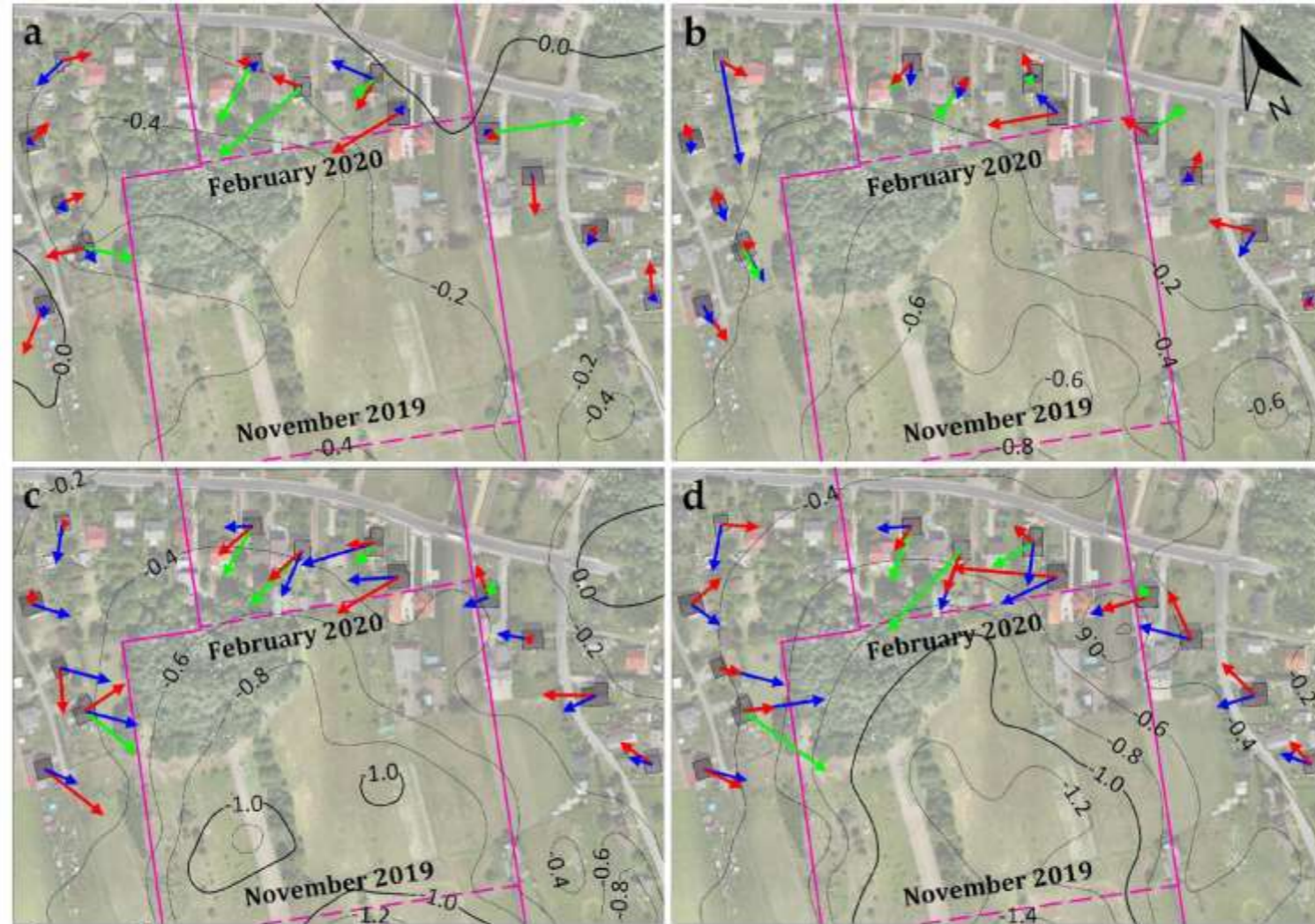


# Surveying equipment used and photogrammetric flight parameters in subsequent measurement series

Measurement series	UAV	Camera parameters	Overlap Forward/Side [%]	Flight Altitude [m]	No. of images
July 2019	DJI S1000	Sony ILCE A7R, Sony Zeiss Sonnar T * FE 35 mm F2.8 ZA	80/60	72	2927
November 2019	DJI S900	Sony ILCE A6000, Sony E T * FE 35 mm F1.8 OSS	80/60	87	4436
February 2020	Birdie UAV	Sony DSC-RX1RII, Carl Zeiss Sonnar T * 35 mm F2	60/60 (double grid)	76	2626
June 2020	Birdie UAV	Sony DSC-RX1RII, Carl Zeiss Sonnar T * 35 mm F2	50/70 (double grid)	76	3310
November 2020	Birdie UAV	Sony DSC-RX1RII, Carl Zeiss Sonnar T * 35 mm F2	50/70 (double grid)	76	3675



# Results



## Legend

- |  |   |  |
|--|---|--|
|  TLS    |  Longwall boundary   | Tilt changes   |
|  HzDiff |  Longwall face       |  2.5 [mm/m] |
|  VDiff  |  Land subsidence [m] |  5.0 [mm/m] |

25 50m