



FIG WORKING WEEK 2023

28 May - 1 June 2023 Orlando Florida USA

Protecting
Our World,
Conquering
New Frontiers

TS08F FIG AMERICAS CDN WHO – WHY - WHAT - HOW

KWAME TENADU SNR.

FIG VICE – PRESIDENT

KWAMETENADU@GMAIL.COM

WEDNESDAY MAY 31,

14.30 – 16.00



Organized By



Diamond Sponsors



Who is FIG?

- Established in 1878 in Paris by 7 national member associations (Belgium, France, Germany, Italy, Spain, Switzerland and UK)
- Federation of national associations and organisation **Federación de asociaciones y organizaciones nacionales**
- UN-recognised Non-Governmental organisation (NGO) and non-profit organisation **Organización no gubernamental (ONG) y organización sin fines de lucro reconocidas por las Naciones Unidas**

Fundada en 1878 en París por 7 asociaciones nacionales miembros (Bélgica, Francia, Alemania, Italia, España, Suiza y Reino Unido)

- **41** Affiliate members
- 21 Corporate Members
- 83 Academic members
- 5 Correspondents



FIG – a global umbrella organisation

Who are the members of FIG?

- Members of FIG consist of:
 - **member associations** – national associations representing one or more of the disciplines of surveying
 - **affiliates** – groups of surveyors or surveying organizations undertaking professional activities but not fulfilling the criteria for member associations
 - **corporate members** – organizations, institutions or agencies which provide commercial services related to the profession of surveyor
 - **academic members** – organizations, institutions or agencies, which promote education or research in one or more of the disciplines of surveying. An individual may be appointed as a correspondent in a country where no association or group of surveyors exist that is eligible to join FIG as a member.
- https://www.fig.net/organisation/general_assembly/statutes_and_internal_rules/index.asp
- **41** Affiliate members
- **21** Corporate Members
- **83** Academic members
- **5** Correspondents

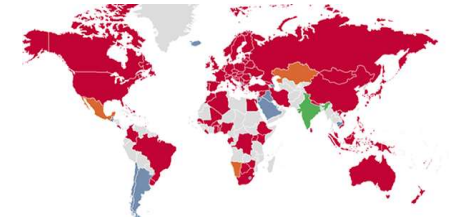
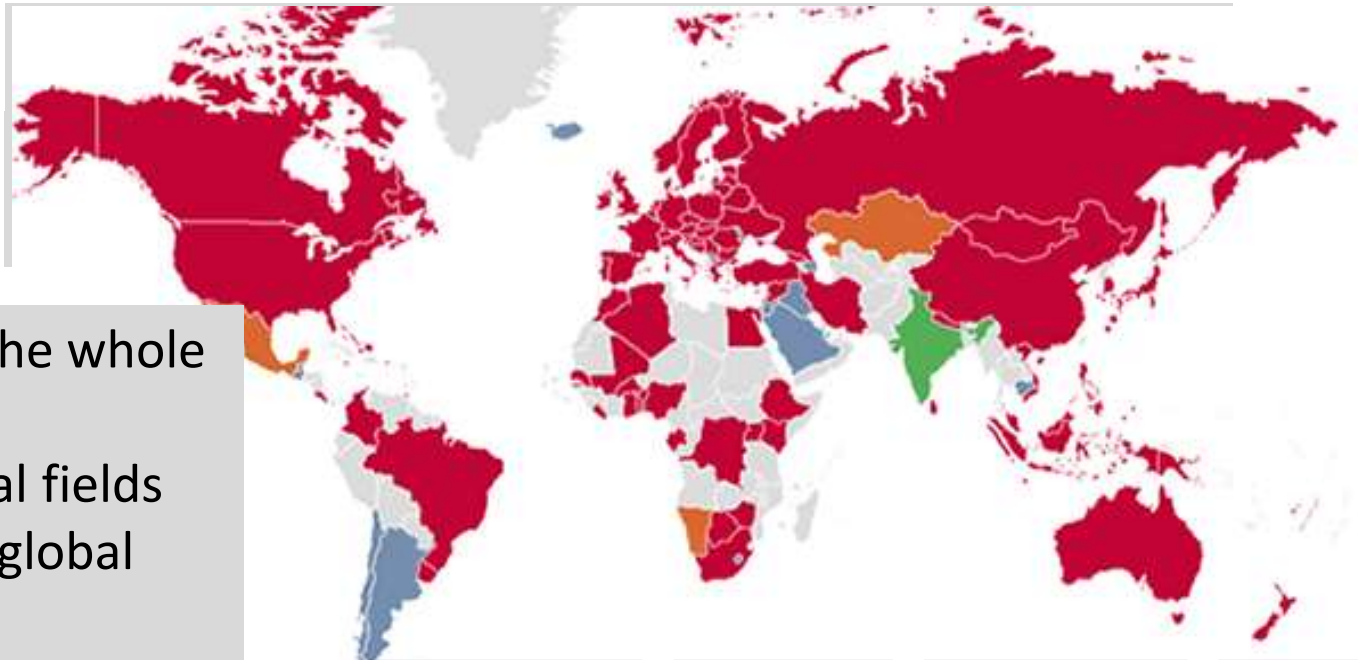
FIG WORKING WEEK 2023

28 May - 1 June 2023 Orlando Florida USA

Protecting Our World, Conquering New Frontiers

It is ...

Who is?



- We cover the whole range of professional fields within the global surveying community, hereunder

Topographic Surveying	Construction Surveying	Engineer Surveying	Land Management	Hydrography	Surveying	Cadaster	Mapping	Geodesy	Quantity Surveying	Valuation	Geo-information
-----------------------	------------------------	--------------------	-----------------	-------------	-----------	----------	---------	---------	--------------------	-----------	-----------------

FIG WORKING WEEK 2023

28 May - 1 June 2023 Orlando Florida USA

Protecting Our World, Conquering New Frontiers

HOW

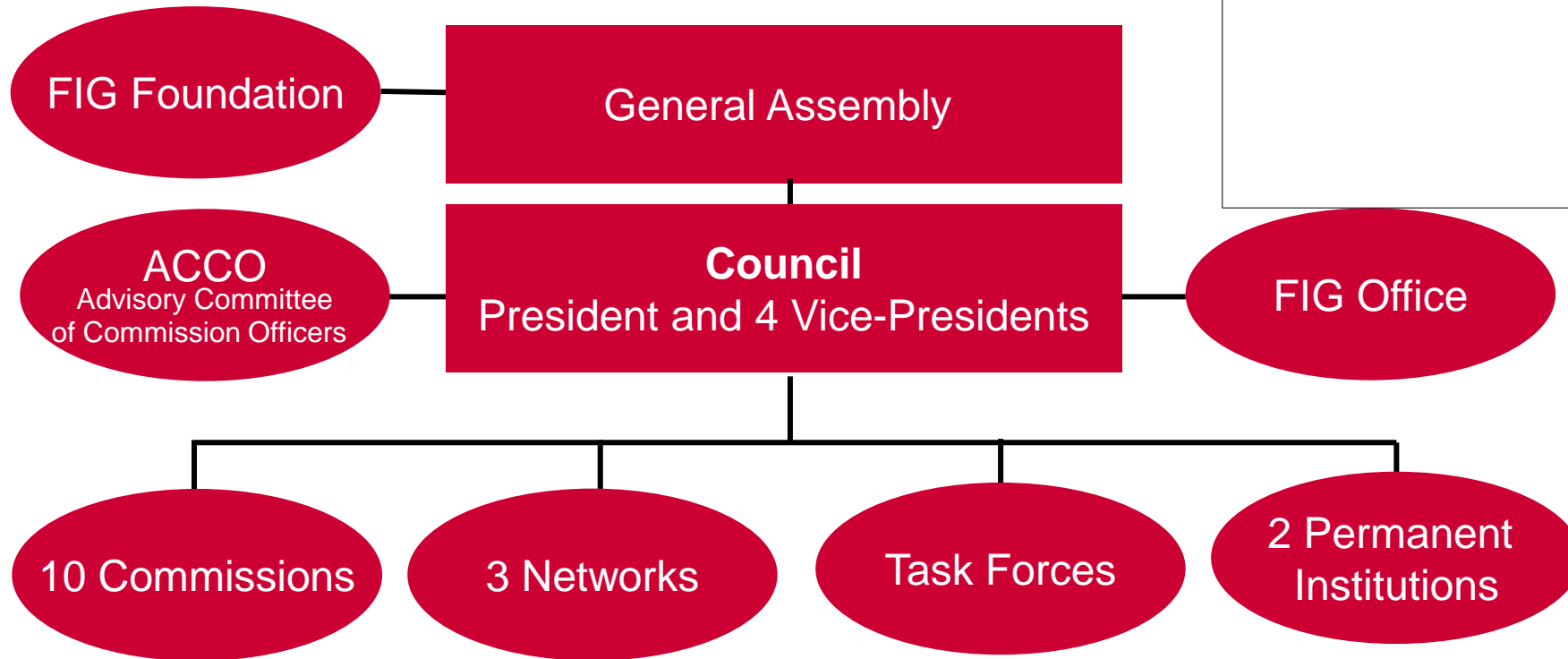




FIG WORKING WEEK 2023 PUBLICATIONS

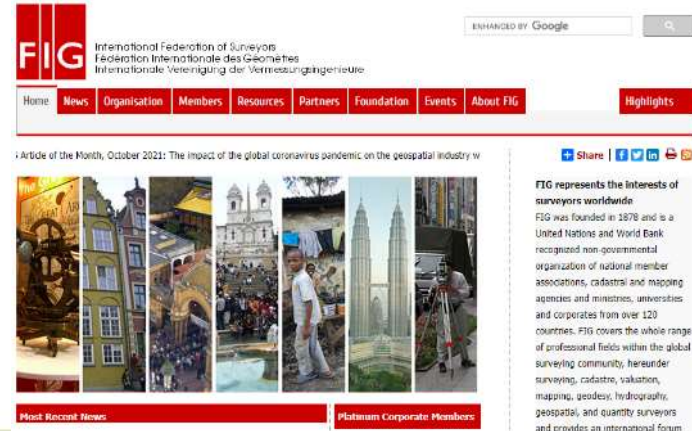
28 May - 1 June 2023 Orlando Florida USA



FIG Publication Series – 78 Publications

Conference Proceedings

WHAT



Web site

Organized By



Three milleniums of Measurement on Earth – Special edition
35 years of research – 3,000 pages – over 350 illustrations

Diamond Sponsors



WHY

FIG Aims at Serving Society, Benefitting people And The Planet:



Cooperation at regional level:

WHERE



ADVOCACY

SCIENCE & RESEARCH

POLICY

WHY

Mission of FIG

**“Serving Society,
Benefitting People And The
Planet” – through
KNOWLEDGE &
COLLABORATION**

TACKLING THE
GLOBAL CHALLENGES

For your information the FIG 2023- 2026 Work plan can be found here:
[app_11_FIG_Council_workplan-2023-2026.pdf](https://www.fig.int/app_11_FIG_Council_workplan-2023-2026.pdf)



HOW

The Benefit of Being a Member

- being part of the global community of surveyors seeking to extend the usefulness of surveying for the betterment of society, environment and economy
- Ser parte de la comunidad global de topógrafos que buscan extender la utilidad de la topografía para el mejoramiento de la sociedad, el medio ambiente y la economía
- international recognition of the national profession and enhancement of the profile of the international surveying profession
- Reconocimiento internacional de la profesión nacional y mejora del perfil de la profesión internacional de agrimensura
- access to the international surveying community for exchange of experiences and new developments
- Acceso a la comunidad internacional de agrimensura para el intercambio de experiencias y novedades
- access to surveyors and surveying companies throughout the world who already have established connections with influential international bodies
- Acceso a topógrafos y empresas de topografía de todo el mundo que ya han establecido conexiones con organismos internacionales influyentes

HOW

- opportunities through the commission working groups and FIG Task Forces to take part in the development of many aspects of surveying practice and the various disciplines, including ethics, standards, education and a whole range of professional issues
- oportunidades a través de los grupos de trabajo de la comisión y los grupos de trabajo de la FIG para participar en el desarrollo de muchos aspectos de la práctica de la topografía y las diversas disciplinas, incluida la ética, las normas, la educación y toda una gama de cuestiones profesionales.
- access to continuing professional development and critical self evaluation of individual standards and professionalism
- Acceso al desarrollo profesional continuo y a la autoevaluación crítica de los estándares individuales y al profesionalismo
- access to institutional FIG support – the global surveying community – when aiming to improve the educational or professional standing in society; or improving the national systems for land registration and land management.
- acceso al apoyo institucional de la FIG, la comunidad global de encuestadores, con el objetivo de mejorar la posición educativa o profesional en la sociedad; o mejorar los sistemas nacionales de registro y ordenación de la tierra.
- For further information about FIG and its activities consult the homepage at: www.fig.net
- Para más información sobre la FIG y sus actividades, consulte la página de inicio en: www.fig.net

HOW

Commission 1: Professional Practice

- International Ethics Standards (WG 1.1)
- Women in Surveying (WG 1.2)
- International Boundary Settlement and Demarcation (WG 1.3)



Commission 2: Professional Education

- WG 2.1 Developing and strengthening academic networks
- WG 2.2 Innovation in Curriculum development implementation
- WG 2.3 Young surveyors in Education - Learning styles in surveying education



Commission 3: Spatial Information Management

- WG 1: Geospatial data: professionalism, technology, and services
- WG 2: Urban challenges in developing countries (joint WG with Commission 9)
- WG 3: GIS for sustainable (geo-)spatial planning (joint WG with Commission 8)
- WG 4: LADM and 3D LA (joint WG with Commission 7)
- WG 5: Geospatial next (joint with the Young Surveyors Network)



Commission 5: Positioning And Measurement

- WG 1 – Standards, Quality Assurance and Calibration
- WG 2 – 3D Reference Frames
- WG 3 – Vertical Reference Frames
- WG 4 – GNSS
- WG 5 – Multi-Sensor Systems
- WG 6 – Cost-Effective Positioning



HOW

FIG COMMISSIONS AND WORKPLAN:

https://www.fig.net/organisation/general_assembly/agendas_and_minutes/2023/agenda.asp#2

HOW

Commission 1:

Professional Practice

https://www.fig.net/organisation/general_assembly/agendas_and_minutes/2023/agenda/app_22_01_FIG_com_01_workplan_2023-2026.pdf

Commission 2:

Professional Education

- https://www.fig.net/organisation/general_assembly/agendas_and_minutes/2023/agenda/app_22_02_FIG_com_02_workplan_2023-2026.pdf

Commission 3: Equal, Liveable, Available and Affordable Spaces

Spatial Information Management

- https://www.fig.net/organisation/general_assembly/agendas_and_minutes/2023/agenda/app_22_03_FIG_com_03_workplan_2023-2026.pdf

HOW

Commission 4:

Hydrography: The blue Economy

https://www.fig.net/organisation/general_assembly/agendas_and_minutes/2023/agenda/app_22_04_FIG_com_04_workplan_2023-2026.pdf

Commission 5: Positioning And Measurement : The science of measurement (instrumentation, methodology and guidelines)

- https://www.fig.net/organisation/general_assembly/agendas_and_minutes/2023/agenda/app_22_05_FIG_com_05_workplan_2023-2026.pdf

Commission 6:

Engineering Surveying

- https://www.fig.net/organisation/general_assembly/agendas_and_minutes/2023/agenda/app_22_06_FIG_com_06_comm_workplan_2023-2026.pdf

HOW

Commission 7:

Land Management and Cadastre

https://www.fig.net/organisation/general_assembly/agendas_and_minutes/2023/agenda/app_22_07_FIG_com_07_workplan_2023-2026.pdf

Commission 8:

Spatial Planning and Development

- https://www.fig.net/organisation/general_assembly/agendas_and_minutes/2023/agenda/app_22_08_FIG_com_08_comm_workplan_2023-2026.pdf

Commission 9:

Valuation and the Management of Real Estate

- https://www.fig.net/organisation/general_assembly/agendas_and_minutes/2023/agenda/app_22_09_FIG_com_09_%20workplan_2023-2026.pdf

Commission 10:

Construction Economics and Management

https://www.fig.net/organisation/general_assembly/agendas_and_minutes/2023/agenda/app_22_10_FIG_com_10_workplan_2023-2026.pdf

NETWORKS

HOW

- **Standards Network**
- **Regional Capacity Network**
 - **Africa**
 - **Asia/Pacific**
 - **(building up Latin America)**
- **Young Surveyors Network**

FIG WORKING WEEK 2023

28 May - 1 June 2023 Orlando Florida USA

Protecting Our World, Conquering New Frontiers

GRACIAS !!!!!

